

DRM80/100 Door Rails



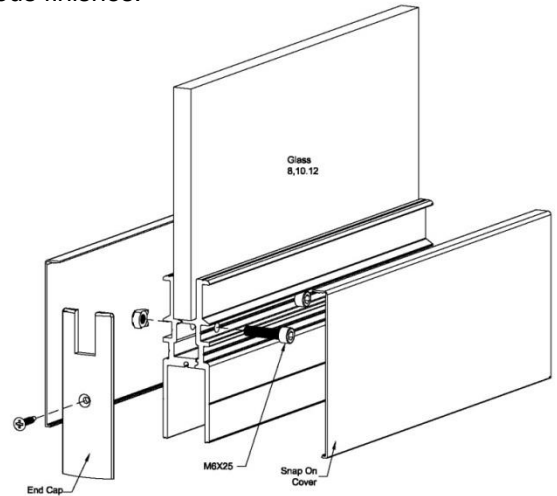
& DRM38 Fixed Panel Rails

P&M® Door Rails is made up of 2-piece extruded aluminium clamping system that are tightened with cap screws at 100mm centre to centre. This system is suitable for the installation of extreme heavy duty wide doors. There are two heights of 80mm (DRM80) and 100mm (DRM100) to choose from and in lengths based on your requirement.

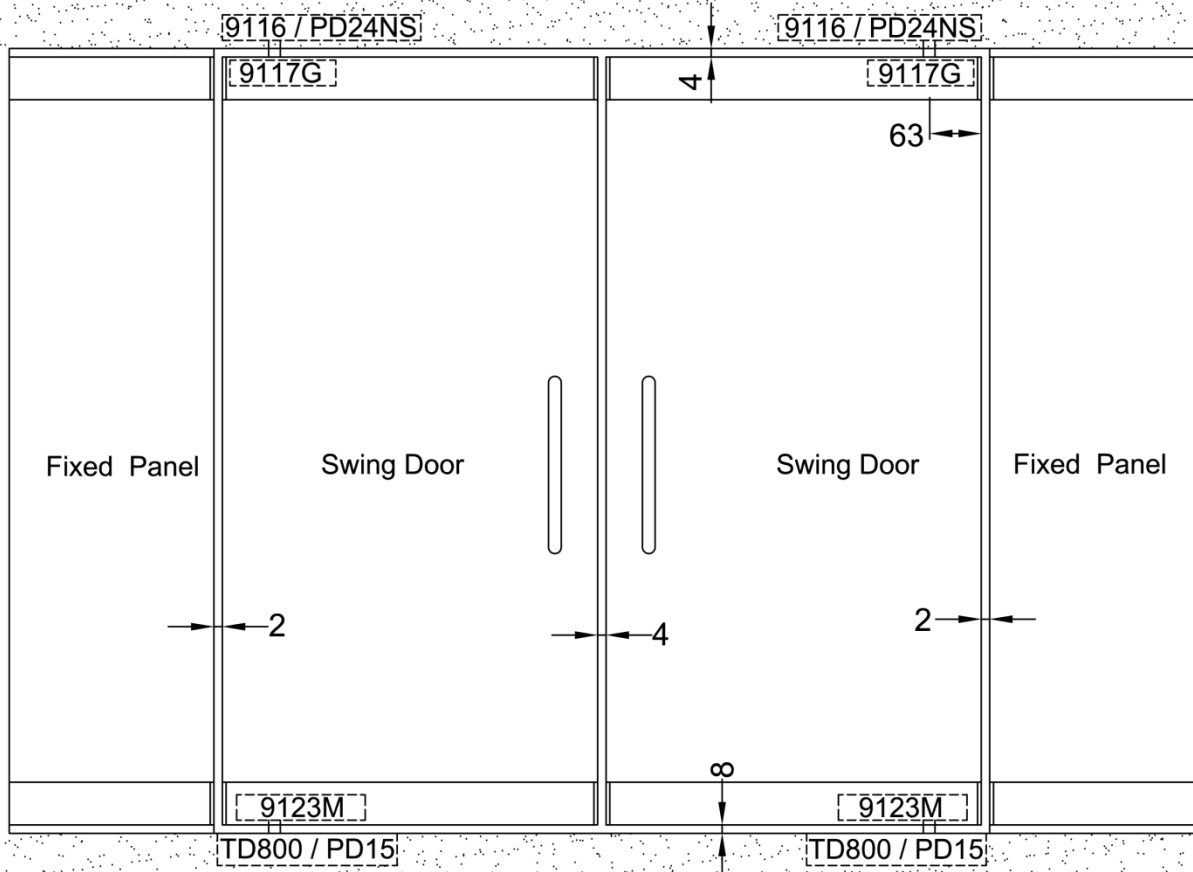
With its clamping efficiency carefully considered, **P&M®** Door Rails does not require any glass preparation and can be supplied for various glass thickness such as 10/12/15/19/21mm. In addition, you have a choice of both aluminium snap-on or stainless steel rail-covers in various finishes.

P&M® Door Rails are also available with security locking devices with Euro-Profile Key Cylinders or Thumb-turn Cylinders that can be installed in either or both top and bottom rails.

To complete the aesthetic facade of glass panels, door rails can also be used for fixed glass panels.



Typical Door Layout Dimension



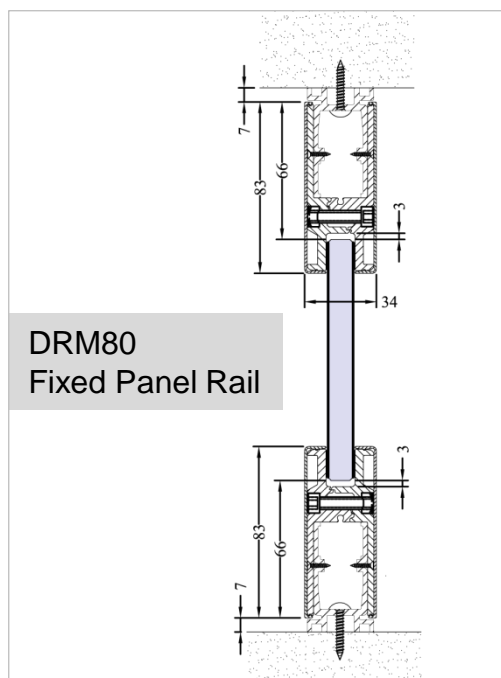
DRM80

DRM80 Door Rails is available with the following standard components:

- Top & Bottom Rails (1set)
- 9116 Retractable Top Pivot
- 9117G Adjustable Top Centre
OR PD24NS Top Pivot
- 9123M Door Strap
- PL2 Lock Bolt
- PM88 Euro-Profile Key Cylinder
- 9137 Keeper Cup

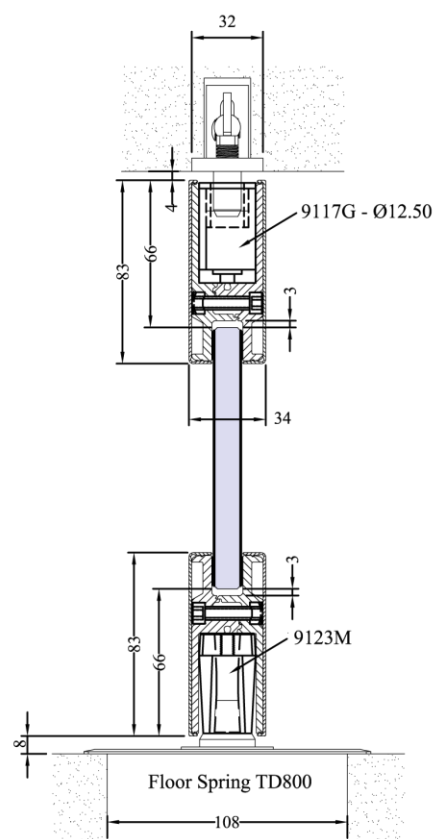
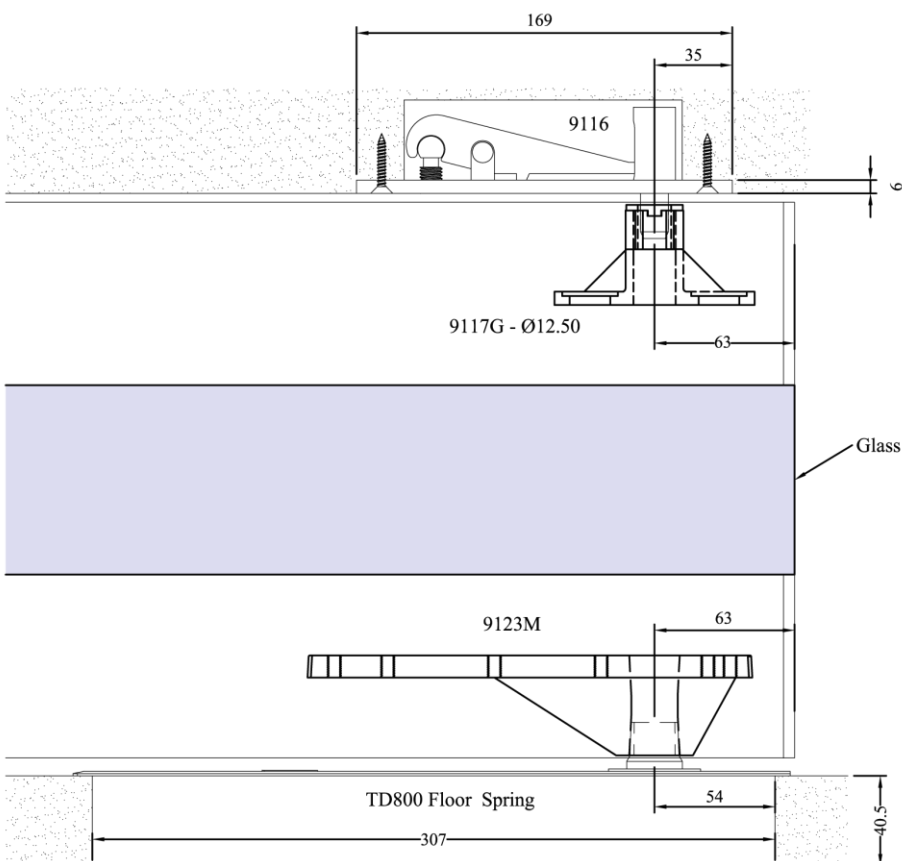
Upon order, please specify the following:

- Usage of Door Rails
 - Floor Spring
 - Overhead Concealed Door Closer
 - Free Pivot Door Panel
- Length of Door Rails
(Glass panel width is required)
- Door Rails Covers
 - Aluminium Snap-On (Natural Anodised)
 - Alinox (LXG1.2) (Satin)
 - SUS304 Stainless Steel (Polish/Satin)
 - SUS316 stainless steel cover is available subject to availability.
- Glass Thickness
(10/12mm)
- Key Combinations
(Independent / Key-Alike)



Note:

Usage of Door Rails will determine the specific components required, therefore it will differ from the listed standard components.



DRM100

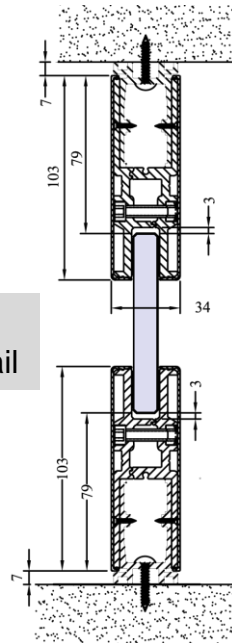
DRM100 Door Rails is available with the following standard components:

- Top & Bottom Rails (1set)
- 9116 Retractable Top Pivot
- 9117G Adjustable Top Centre
OR PD24NS Top Pivot
- 9123M Door Strap
- PL2 Lock Bolt
- PM88 Euro-Profile Key Cylinder
- 9137 Keeper Cup

Upon order, please specify the following:

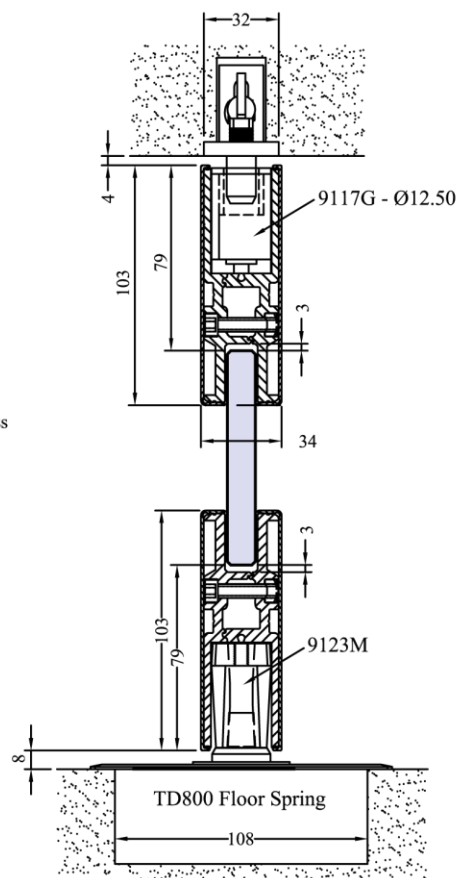
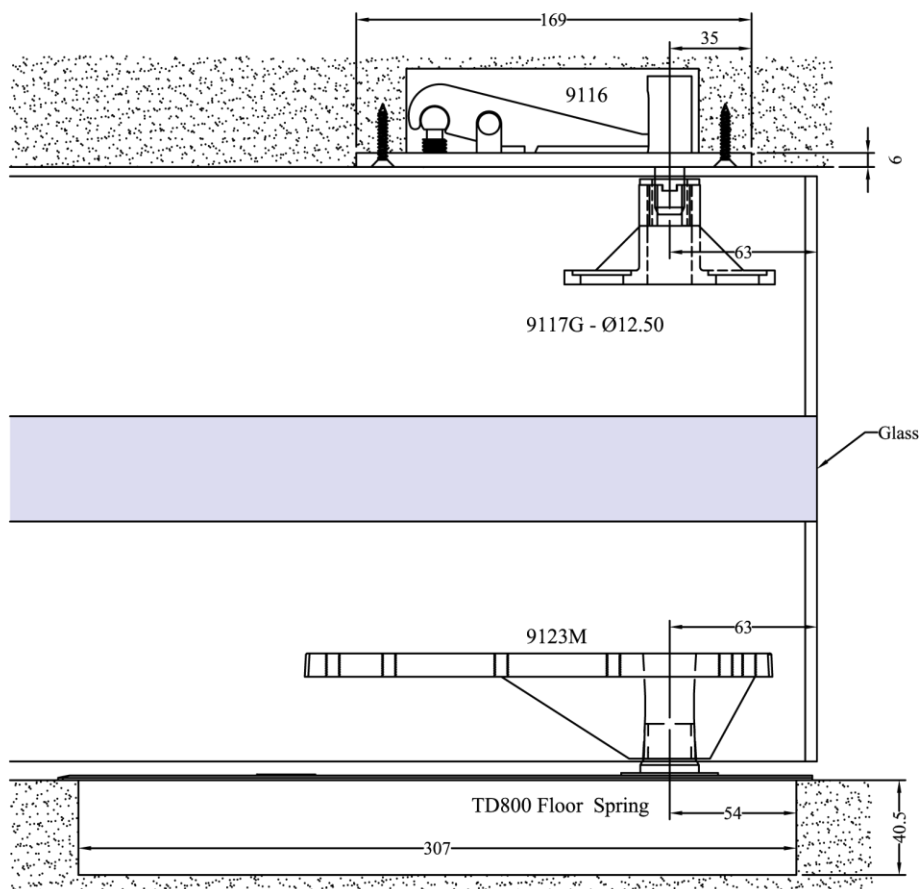
- Usage of Door Rails
 - Floor Spring
 - Overhead Concealed Door Closer
 - Free Pivot Door Panel
- Length of Door Rails
(Glass panel width is required)
- Door Rails Covers
 - Aluminium Snap-On (Natural Anodised)
 - Alinox (LXG1.2) (Satin)
 - SUS304 Stainless Steel (Polish/Satin)
 - SUS316 stainless steel cover is available subject to availability
- Glass Thickness
(10/12/15/19/21mm)
- Key Combinations
(Independent / Key-Alike)

DRM100 Fixed Panel Rail

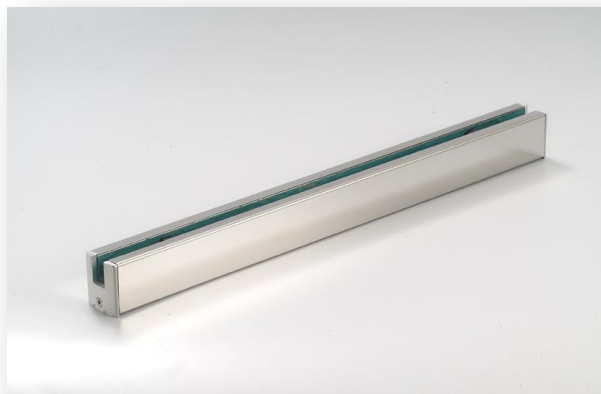


Note:

Usage of Door Rails will determine the specific components required, therefore it will differ from the listed standard components.



DRM38



DRM38 Fixed Panel Rail is designed to:

- facilitate ease of installation of fixed glass panel
- eliminate embedding work for fixed glass panel
- complement the aesthetic facade of fixed glass panel

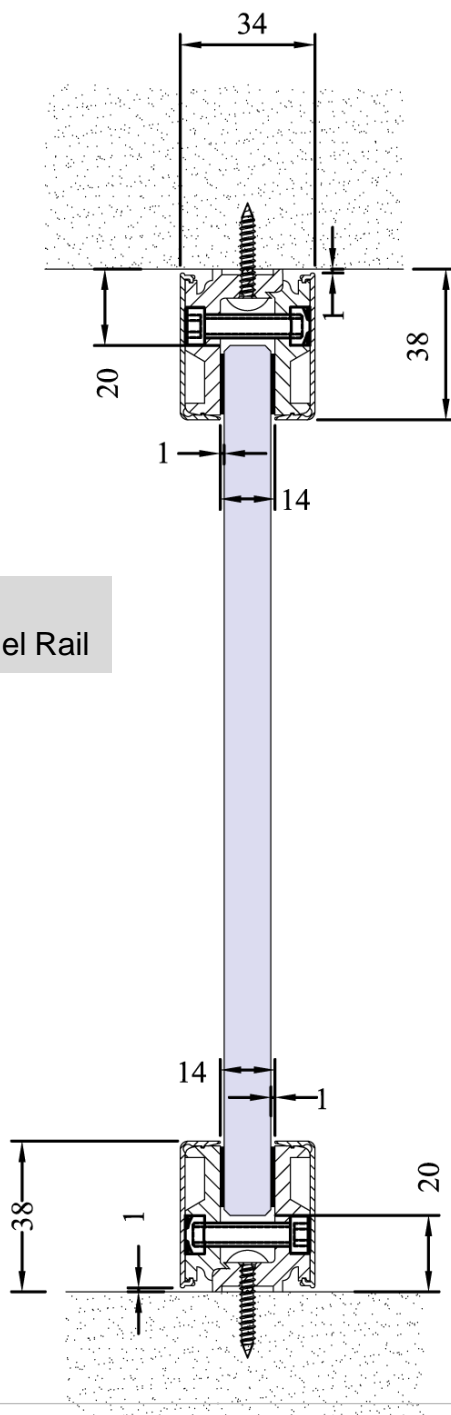
Upon order, please specify the following:

- Length of Fixed Rails
Glass panel width is required
- Fixed Rails Covers
Aluminum Snap-On (Natural Anodised)
Alinox (LXG1.2) (Satin)
SUS304 Stainless Steel (Polish/Satin)
- Glass Thickness
(10/12mm)

Note:

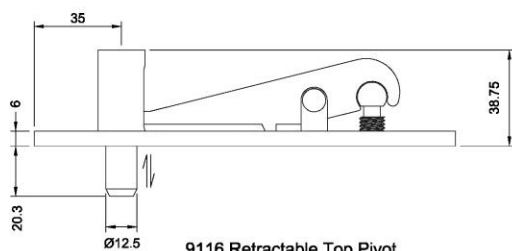
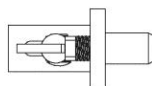
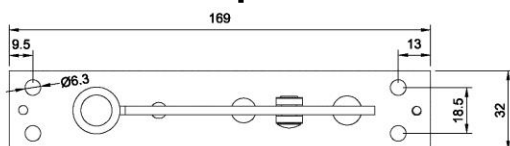
- SUS316 stainless steel cover is available subject to availability
- To complete the aesthetic façade, DRM80 and DRM100 can also be used as fixed panel to form an alignment with the door rail.

**DRM38
Fixed Panel Rail**

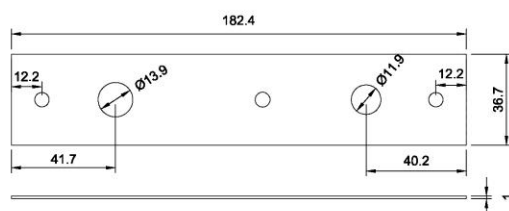
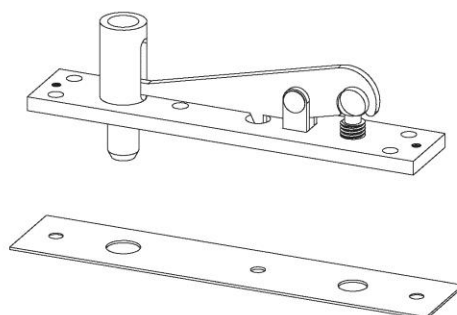


Top Rail Accessories

9116 Retractable Top Pivot

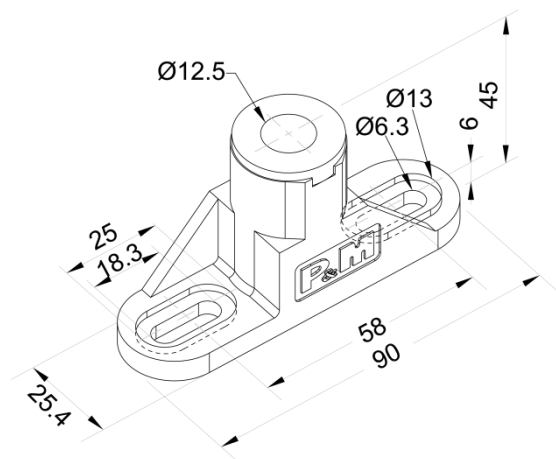


9116 Retractable Top Pivot



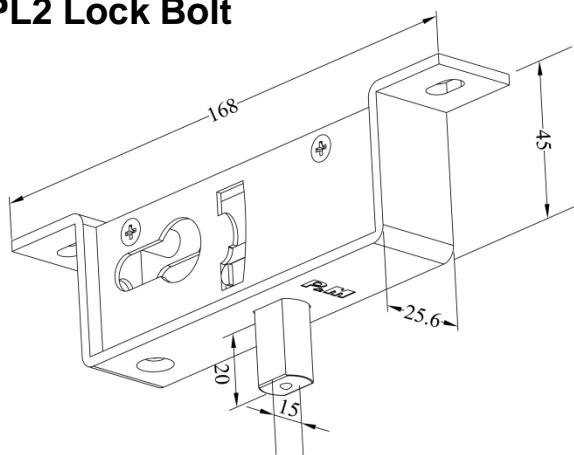
9116 Cover Plate

9117G Adjustable Top Centre



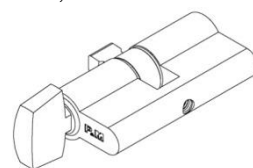
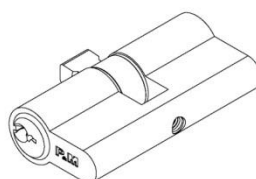
Top Or Bottom Accessories

PL2 Lock Bolt



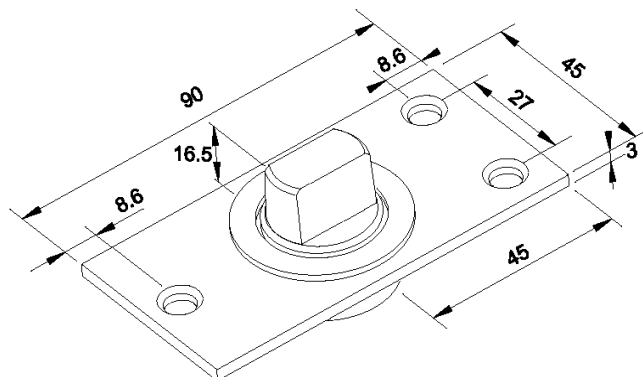
PM88 –
Euro-Profile Key Cylinder
Available Length : (62mm, 42mm)

PM88T-
Thumb Turn & Key Cylinder
Available Length :
(62mm, 28mm Thumb Turn Only)

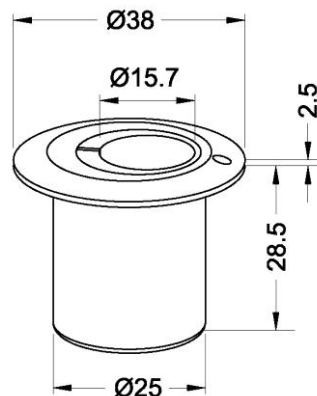


Bottom Rail Accessories

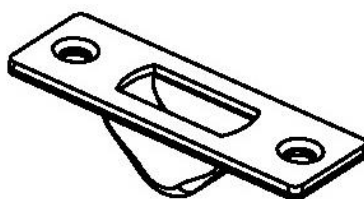
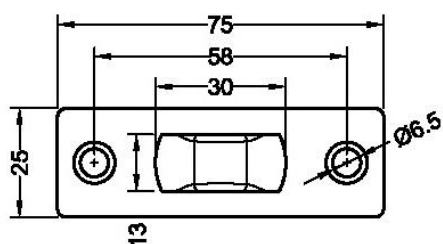
PD 15 Floor Pivot



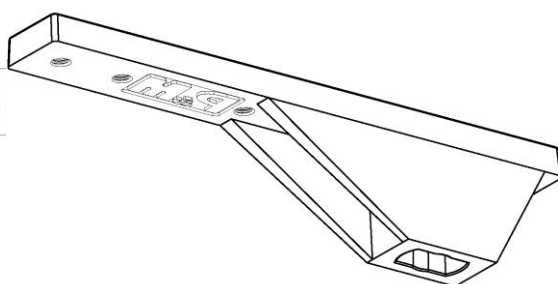
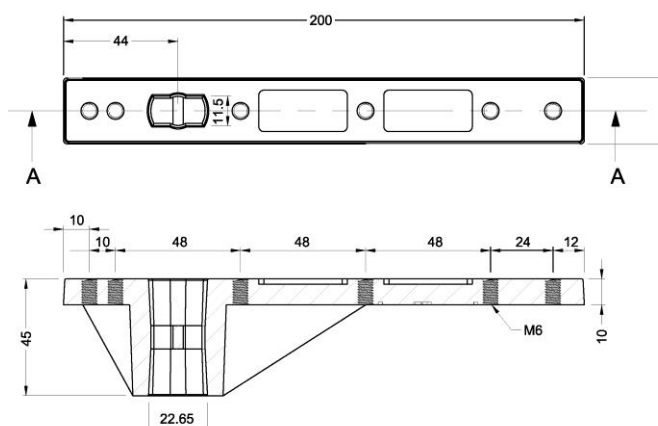
9002 Eccentric Cup



9137 Stainless Steel Keeper Cup

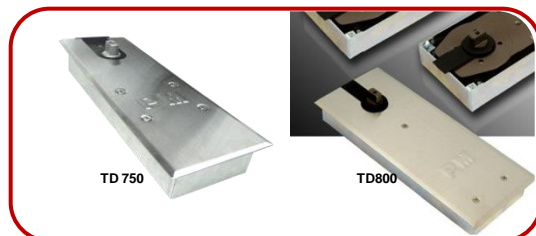


9123M Door Strap



- DRM Door Rails are suitable for installation of extreme wide doors
- Glass preparation not required
- Complements the aesthetic façade of Glass panel.
- Snap-on rail cover available in various finishes
 - Polished Stainless Steel
 - Satin Stainless Steel
 - Satin Alinox (LGX1.2) Aluminium

Related Products



Door Closer – Floor Spring



Door Handles – Melosa Series



Latches & Lock – Alden Series