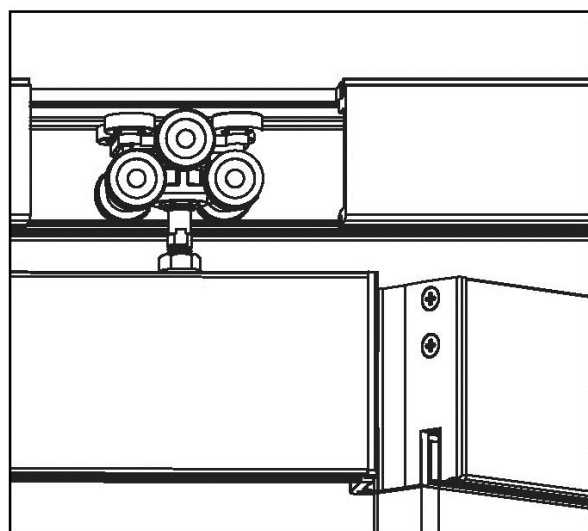
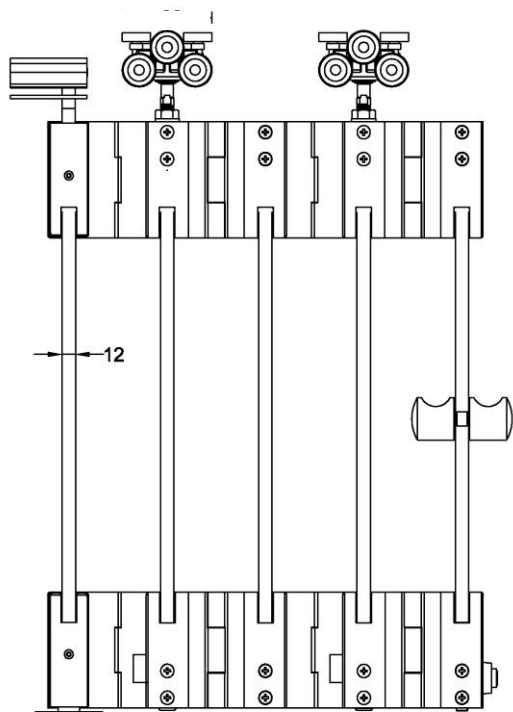


SLF400

Slide and Fold

Glass Panel System



SLF400

SLF400 Slide and Fold Glass Panel System features a straight sliding aluminium top track. This system is able to carry frameless glass door panels of up to 2700mm in height and width of up to 750mm.

Note:

Kindly consult our technical advise if panels exceeds stated dimension.

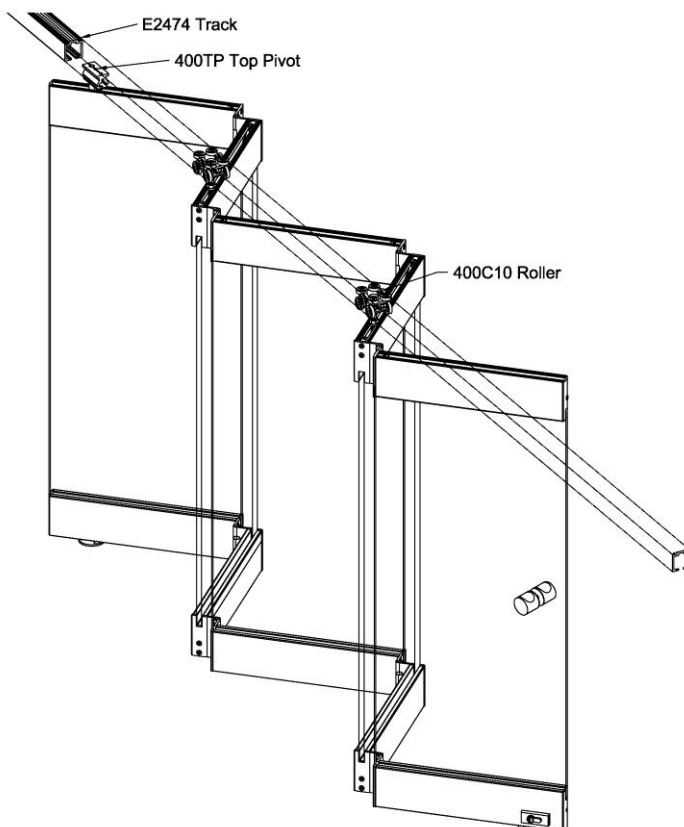
Subject to technical consideration on the maximum number of panels.

With its robust carriage roller made up of stainless steel body with ten ball bearing wheels, it allows better weight distribution and stability, thereby eliminating excessive swaying and reducing the track to wheel friction thus translating smooth and effortless sliding motion.

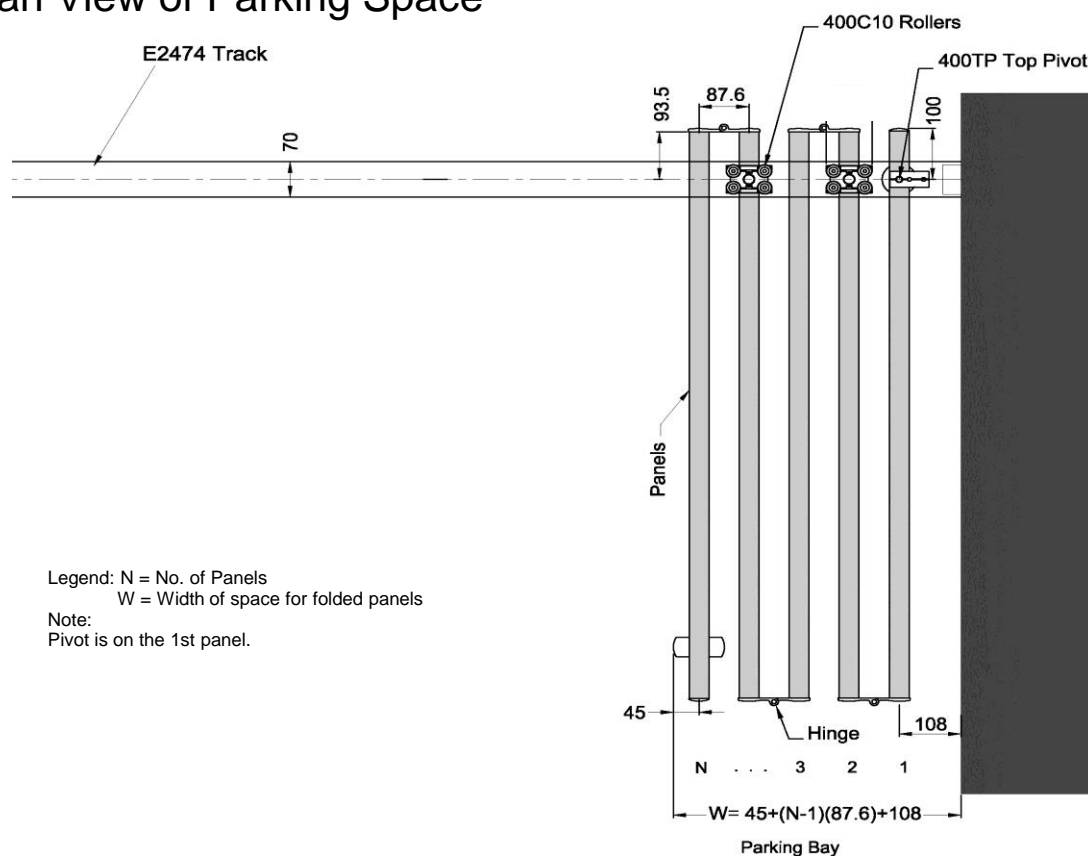
SLF400 complements both maximum shop front area and close customer proximity as the inter-locking frameless glass panels are dock in an accordion-like manner.

It also enhances maximum security with various security locking devices (key lock; thumb turn lock).

SLF400 comprises of sliding door intermediate panels and swing door pivot panel. In addition, you have a choice of both aluminum clip-on rail covers or stainless steel rail-covers of both polish and satin finish.



Plan View of Parking Space



Cross Section with DRM80 Rails

SLF400 with DRM80 Rails is available with the following components:

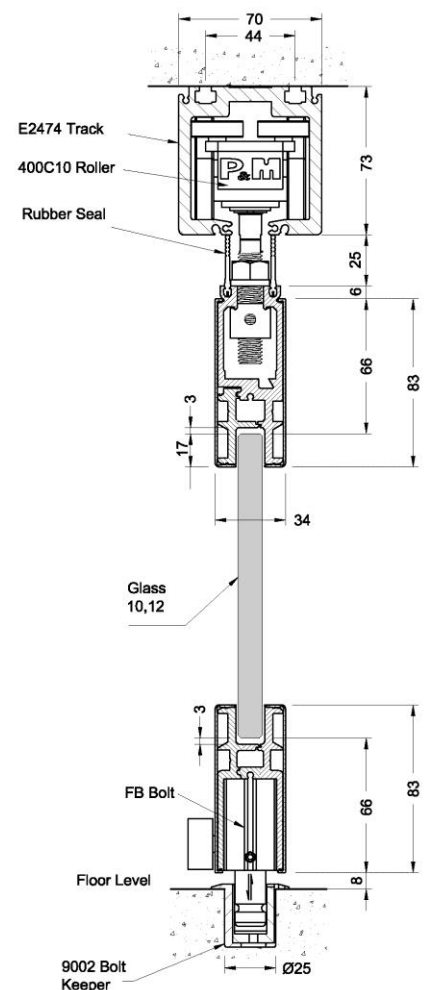
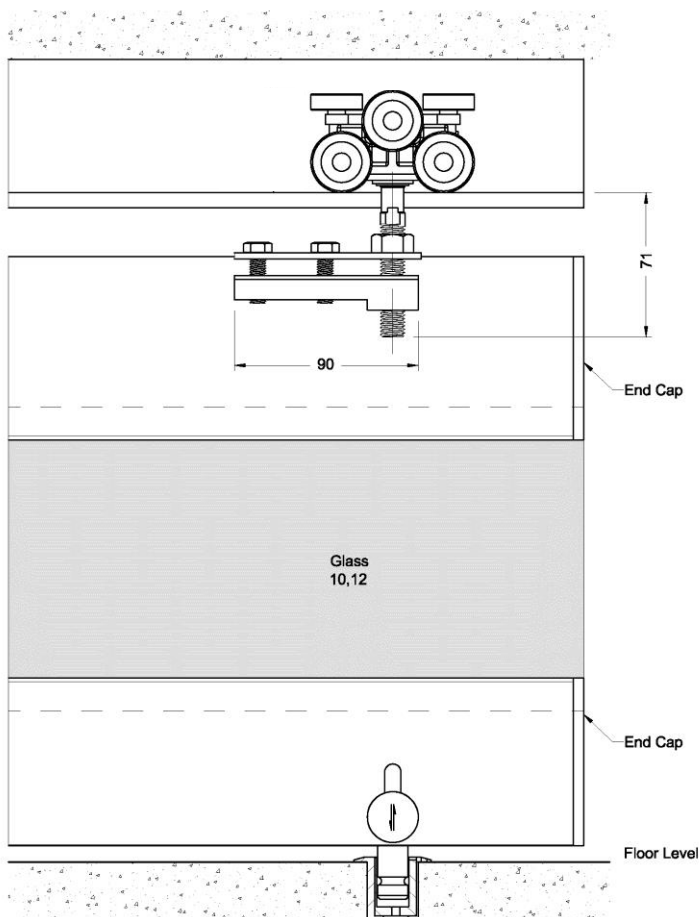
- Main Top Track
- Sliding Door Panels comprising of:
 - DRM80 Top & Bottom Rails (1set / panel)
 - 10pt Carriage Rollers (1no / alternate panel)
 - Hinge
 - Rubber Seals / Bristle
 - Flush Bolts
 - End Caps
 - Bolt Keepers
- Swing Door Panels comprising of:
 - DRM80 Top & Bottom Rails (1set / panel)
 - Hinge
 - Top Pivot / End Stopper
 - Bottom Pivot
 - Rubber Seals / Bristle
 - Euro-profile Key / Thumb Turn Cylinders
 - Lock Bolt
 - End Caps
 - Bolt Keeper

Upon order, please specify the following:

- Length of Rails
(Glass panel width is required)
- Door Rails Covers
Aluminium Snap-On (Natural Anodised)
Stainless Steel (Polish/Satin)
- Glass Thickness
(10 / 12mm)
- Key Combinations
(Independent / Key-Alike)

Note:

- Total number of panels per system is determined by:
Total clear opening width
Per glass panel width (ne: 1000mmL)
- SUS316 stainless steel cover is available subject to availability.
- Glass thru-hole fixing is recommended for door panels with $\geq 3m$ height



Cross Section with DRM100 Rails

SLF400 with DRM100 Rails is available with the following components:

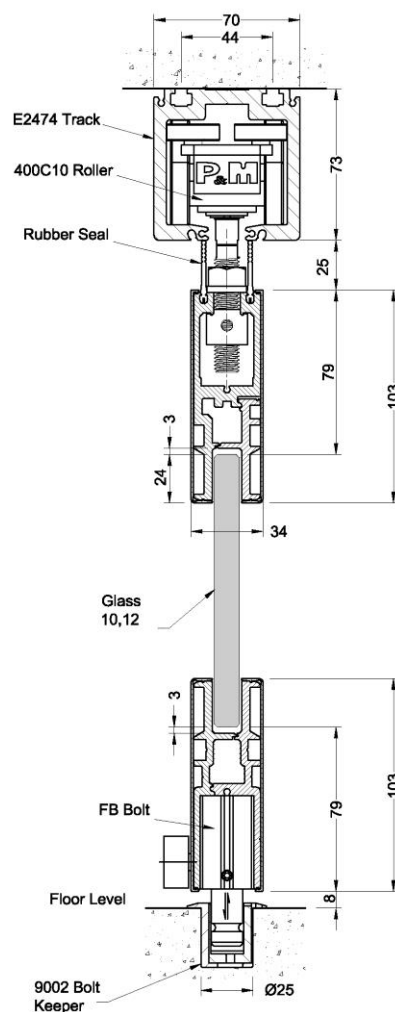
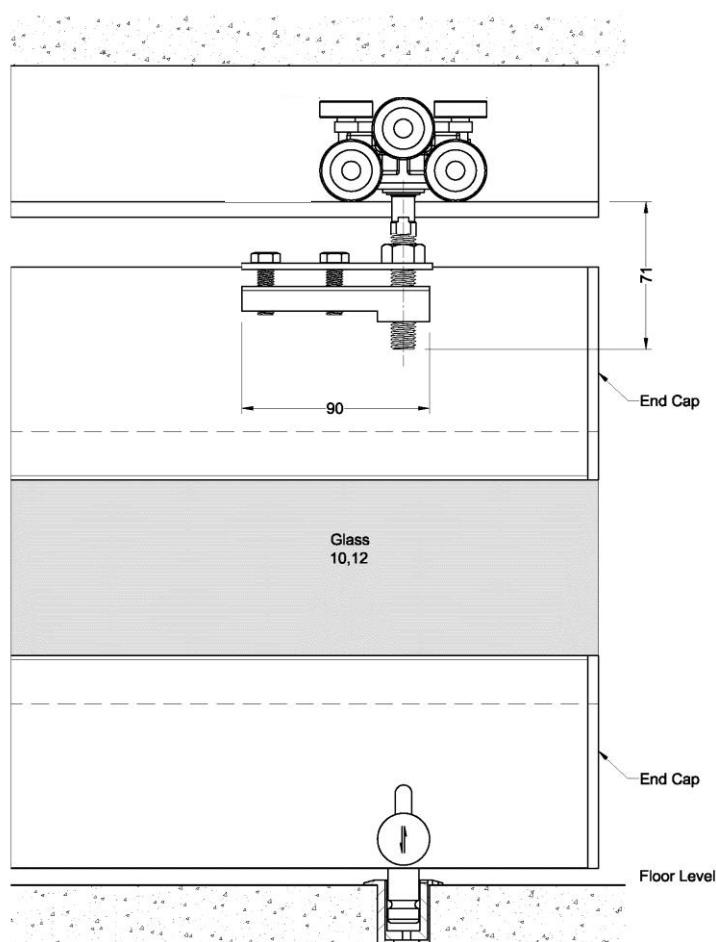
- Main Top Track
- Sliding Door Panels comprising of:
 - DRM100 Top & Bottom Rails (1set / panel)
 - 10pt Carriage Rollers (1no / alternate panel)
 - Hinge
 - Rubber Seals / Bristle
 - Flush Bolts
 - End Caps
 - Bolt Keepers
- Swing Door Panels comprising of:
 - DRM100 Top & Bottom Rails (1set / panel)
 - Hinge
 - Top Pivot / End Stopper
 - Bottom Pivot
 - Rubber Seals / Bristle
 - Euro-profile Key / Thumb Turn Cylinders
 - Lock Bolt
 - End Caps
 - Bolt Keeper

Upon order, please specify the following:

- Length of Rails
(Glass panel width is required)
- Door Rails Covers
Aluminium Snap-On (Natural Anodised)
Stainless Steel (Polish/Satin)
- Glass Thickness
(10 / 12mm)
- Key Combinations
(Independent / Key-Alike)

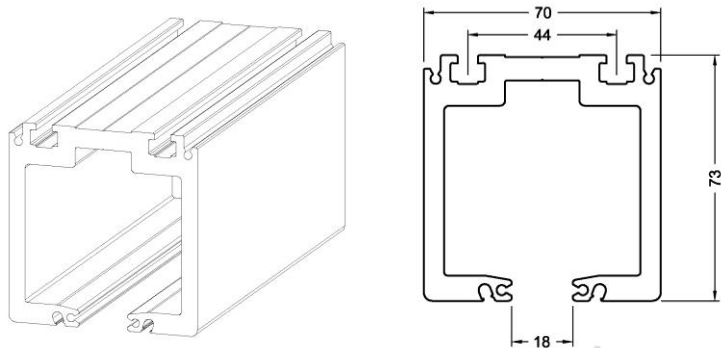
Note:

- Total number of panels per system is determined by:
Total clear opening width
Per glass panel width (ne: 1000mmL)
- SUS316 stainless steel cover is available subject to availability.
- Glass thru-hole fixing is recommended for door panels with $\geq 3m$ height

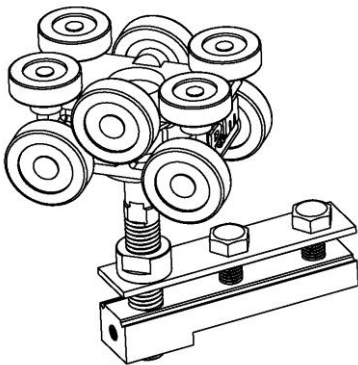


Accessories

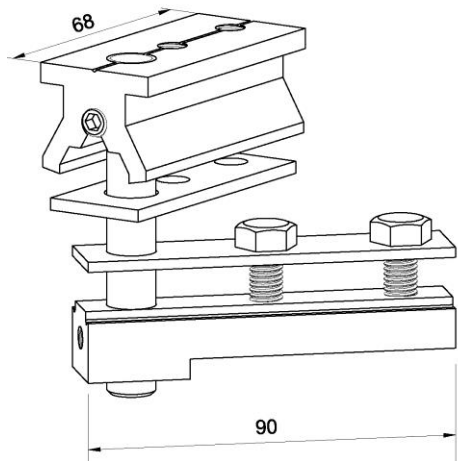
E2474 – Main Top Track



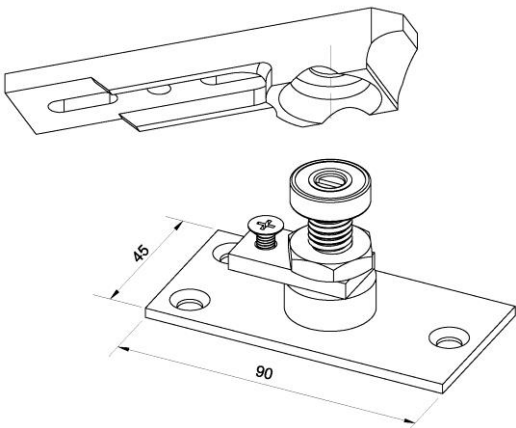
400C10 – 10pt Carriage Roller with Slider



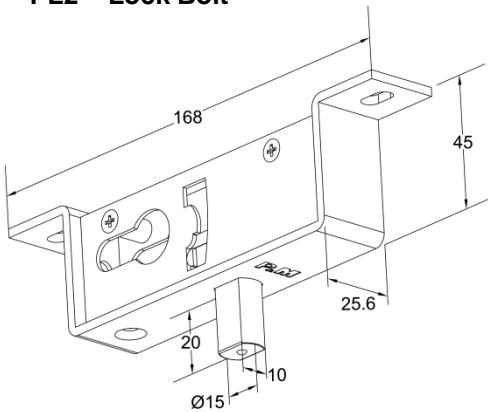
400TP – Top Pivot with Slider



PD16- Bottom Pivot

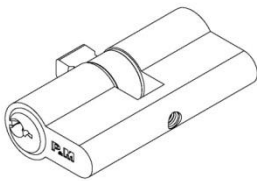


PL2 – Lock Bolt



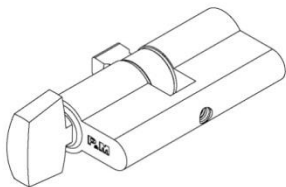
PM88 Euro-Profile Key Cylinder

Available Length : (62mm, 42mm)



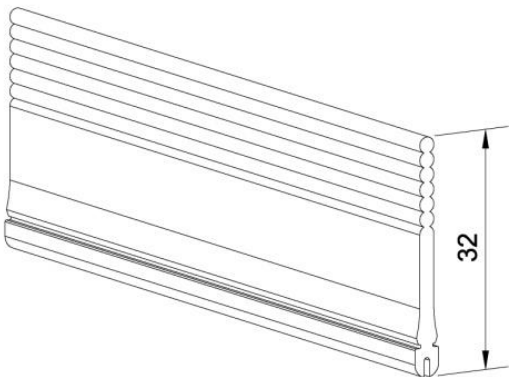
PM88T Thumb Turn & Key Cylinder

Available Length : (62mm, 28mm Thumb Turn Only)

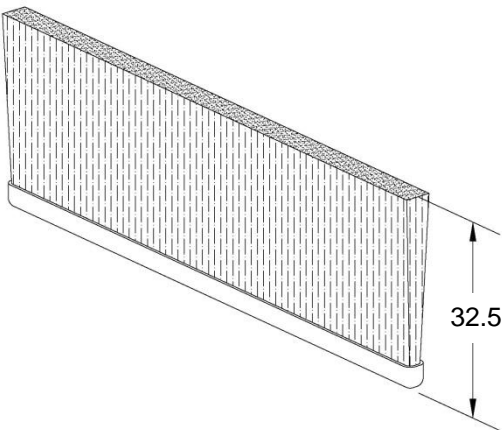


Accessories

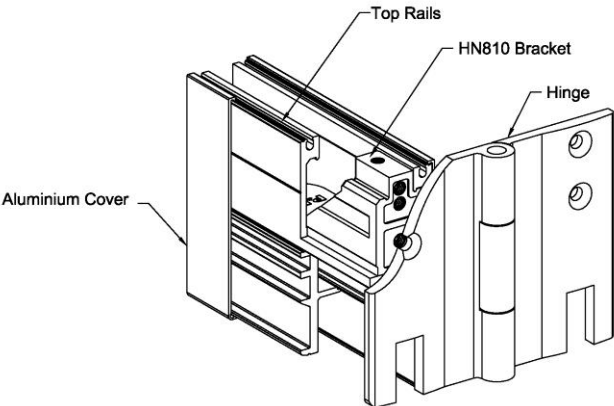
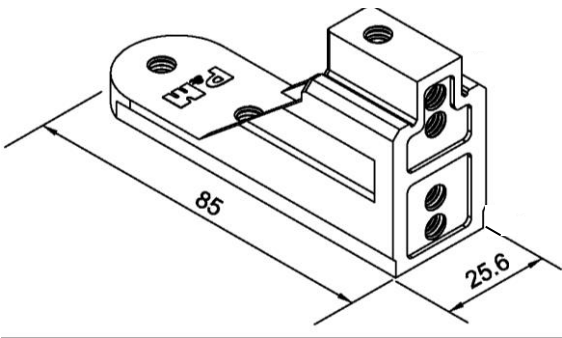
7322 – Rubber Seal



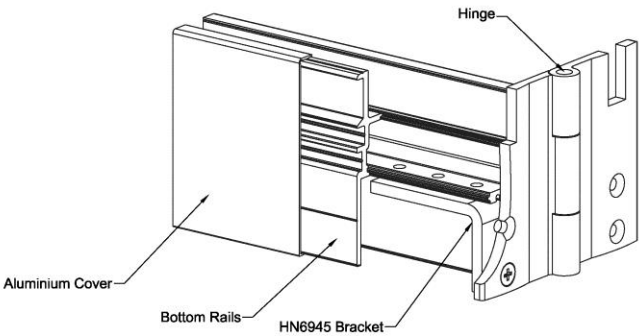
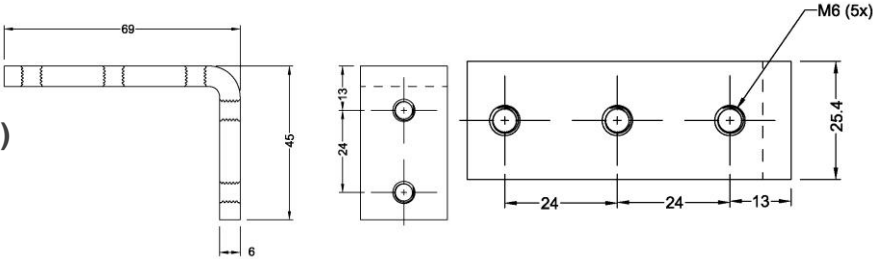
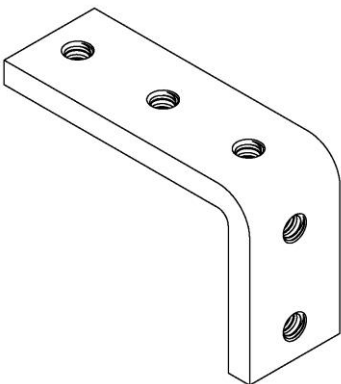
Bristle



HN810 – Bracket (Top Rail)

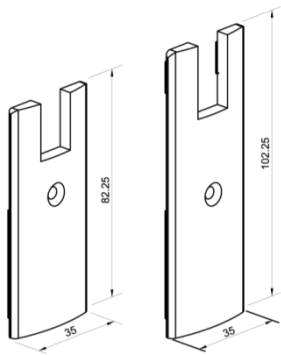


HN6945 – Bracket (Bottom Rail)

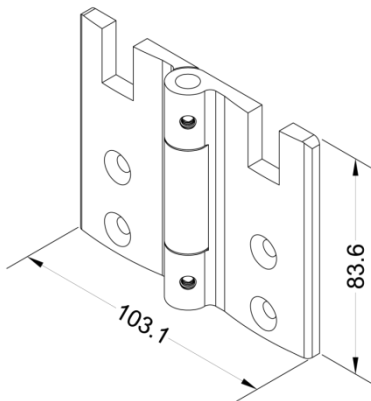


Accessories

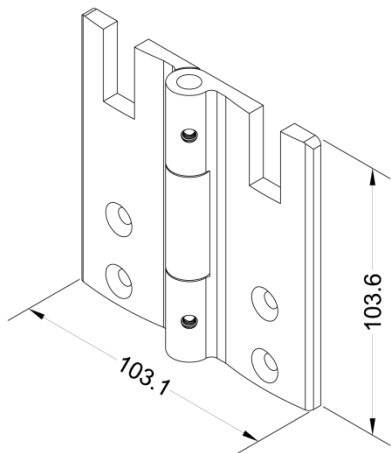
End Caps (EC80 & EC100)



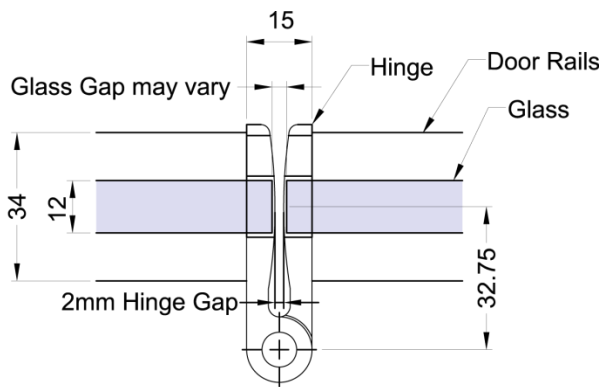
HN80 – Hinge (DRM80)



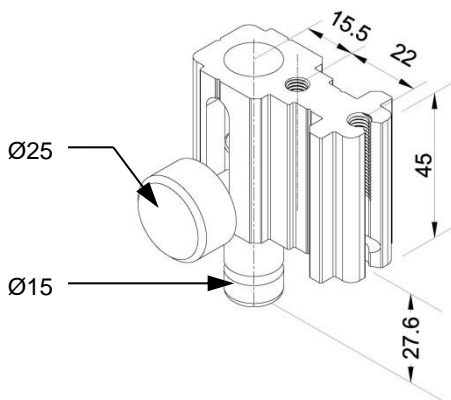
HN100 – Hinge (DRM100)



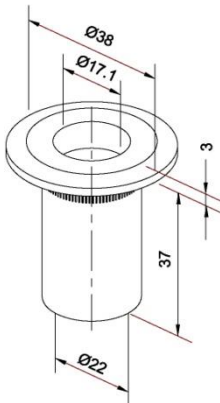
Glass Gap Between Folding Hinge (HN80 / HN100)



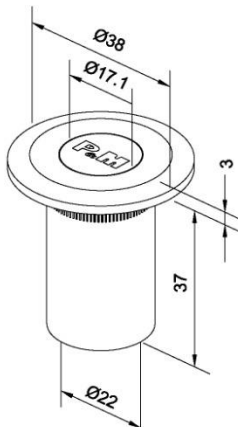
FB- Front Flush Bolt



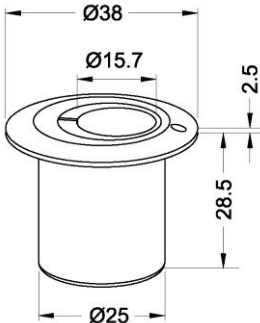
9001 – Bolt Keeper



9001WS – Bolt Keeper with Spring

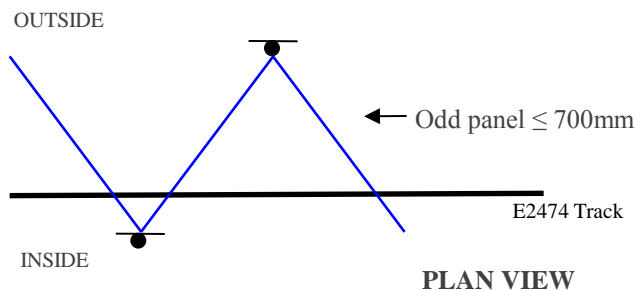


9002 – Eccentric Bolt Keeper

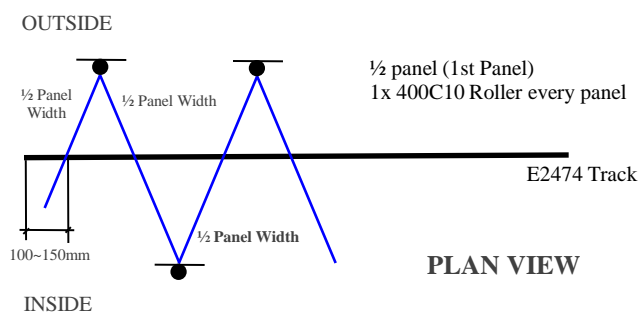


Panel Width Options

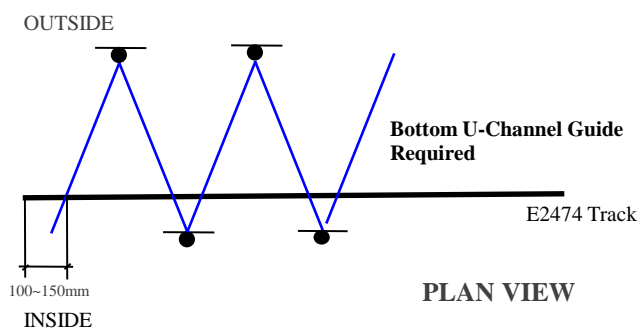
1) Panel Width $\leq 800\text{mm}$



2) $800\text{mm} \leq \text{Panel Width} \leq 1000\text{mm}$



3) Panel Width $\geq 800 \sim 1000\text{mm}$



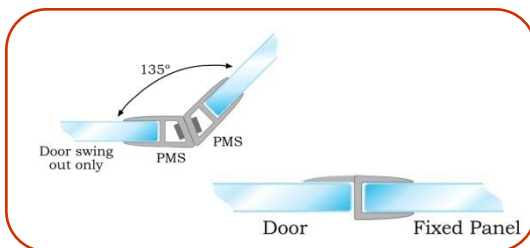
Related Products



Door Handles – Melosa Series



Door Knobs – Cerise Series



Vinyl Clip Seals – Deane Series