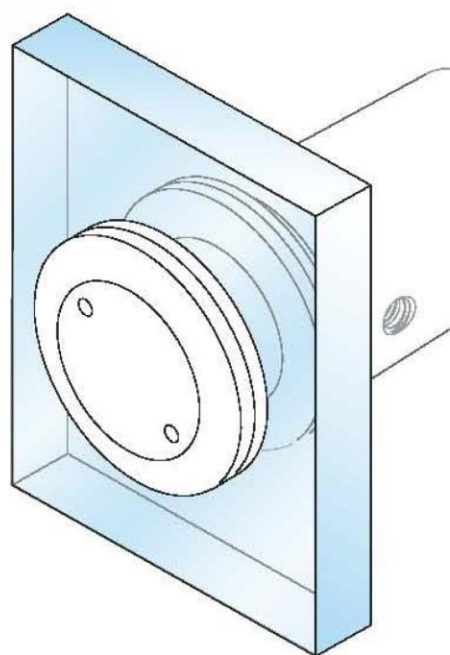




STANDOFF



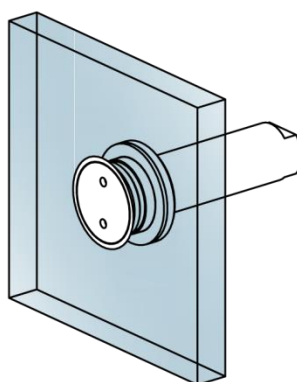
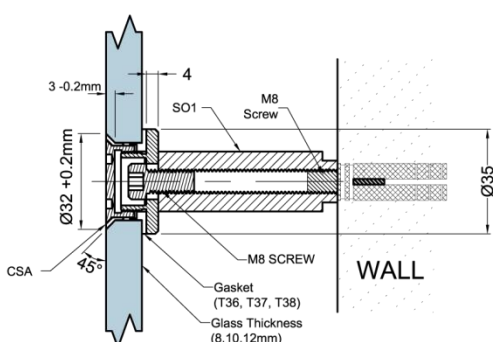
SO1

Glass to Wall Standoff

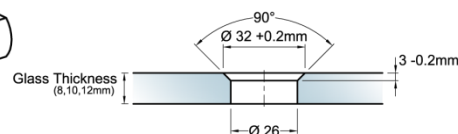


- For 8, 10, 12mm glass thickness
- Options: Countersunk Point Stud
Flathead Point Stud Adjustable
- Ø20mm Standoff Barrel available in 30mm, 45mm & 60mm Height
- Material: SUS304
- Finishes: Satin Stainless Steel

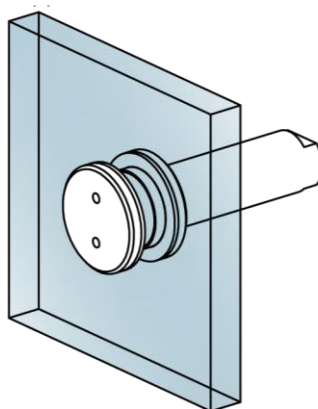
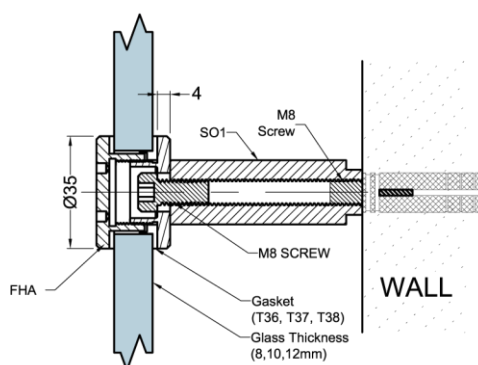
CSA – Countersunk Point Stud (Adjustable)



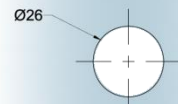
Glass Preparation For Countersunk Point Stud



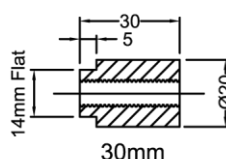
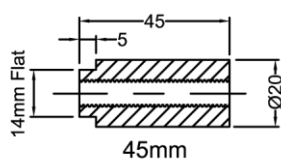
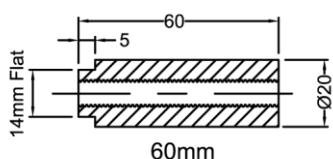
FHA – Flat Point Stud (Adjustable)



Glass Preparation for Flat Point Stud



Available SO1 Barrel Length: 30mm, 45mm & 60mm

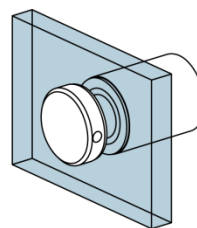
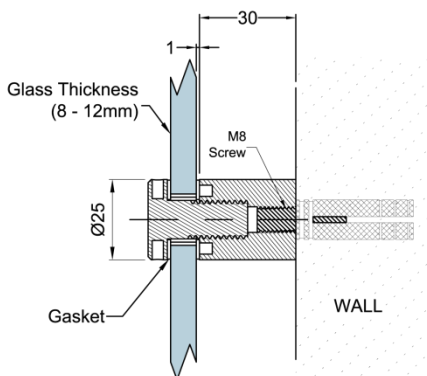


Gasket for 8,10,12mm Glass Thickness

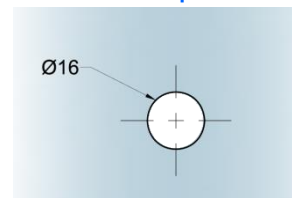
	for 12mm Glass Thickness	for 10mm Glass Thickness	for 8mm Glass Thickness
ROUND GASKET MODEL	T38 1.5	T37 3.5	T36 5.5

SO2

Glass to Wall Standoff



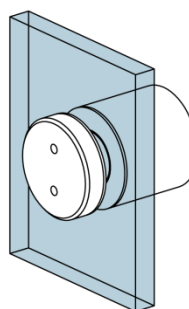
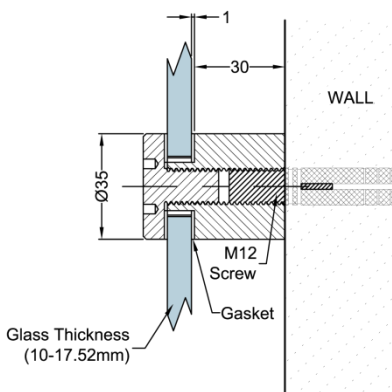
Glass Preparation



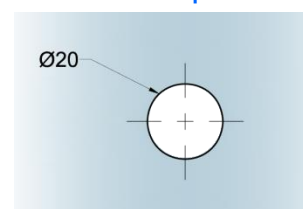
- For 8, 10, 12mm glass thickness
- Ø25mm x 30mm height barrel
- Material: SUS304
- Finishes: Satin Stainless Steel

SO3

Glass to Wall Standoff



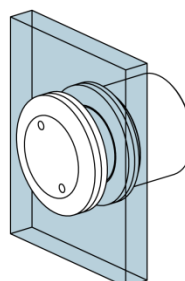
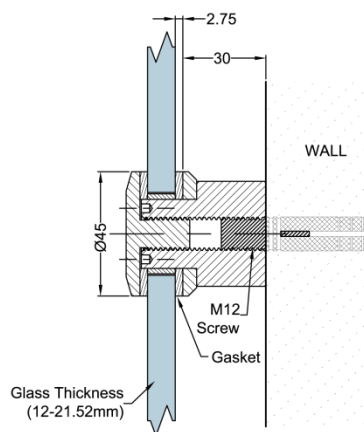
Glass Preparation



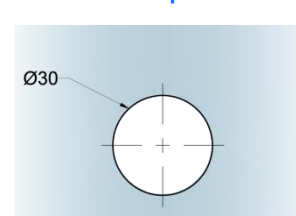
- For 10 – 17.52mm glass thickness
- Ø35mm x 30mm height barrel
- Material: SUS304
- Finishes: Satin Stainless Steel

SO4

Glass to Wall Standoff



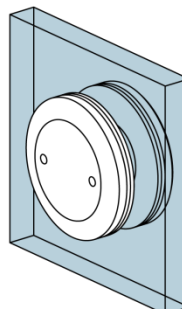
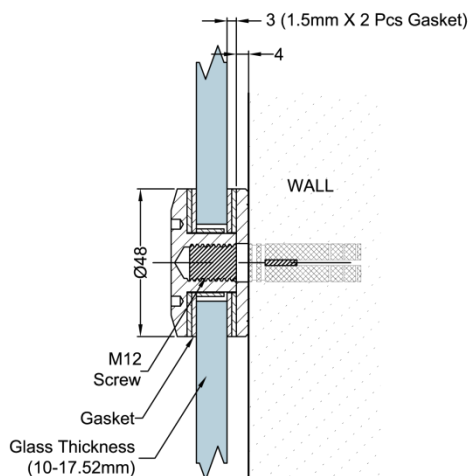
Glass Preparation



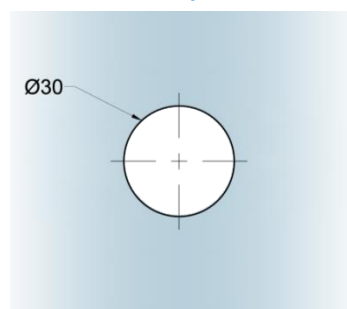
- For 12 – 21.52mm glass thickness
- Ø45mm flathead point stud
- Barrel : Ø38mm x 25mm height
- Material: SUS304
- Finishes: Satin Stainless Steel

SO5

Glass to Wall Standoff



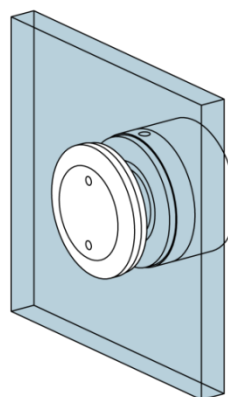
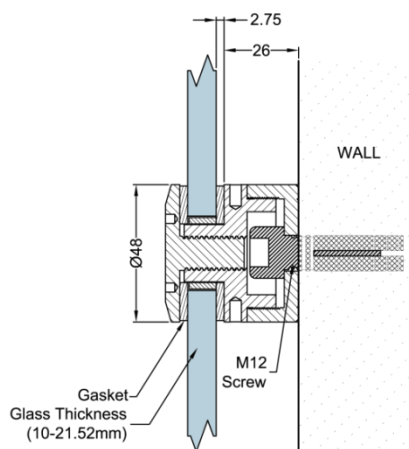
Glass Preparation



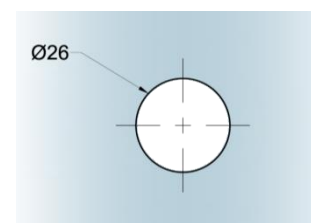
- For 10 – 17.52mm glass thickness
- Ø48mm flathead point stud
- Material: SUS304
- Finishes: Satin Stainless Steel

SO6

Glass to Wall Standoff



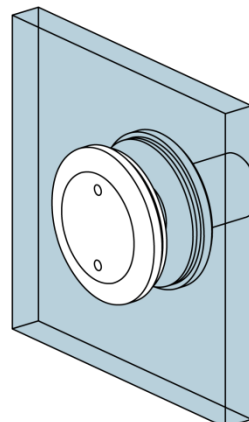
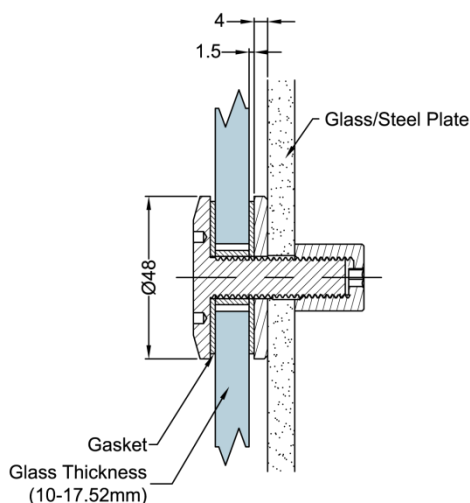
Glass Preparation



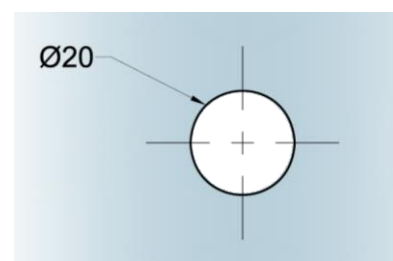
- For 10 – 21.52mm glass thickness
- Ø48mm x 30mm height Barrel
- Material: SUS304
- Finishes: Satin Stainless Steel

SO7

Glass to Wall Standoff



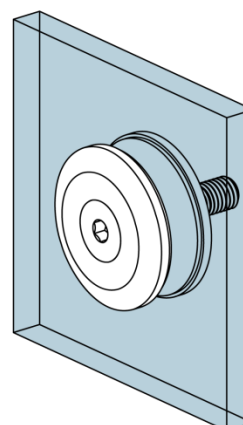
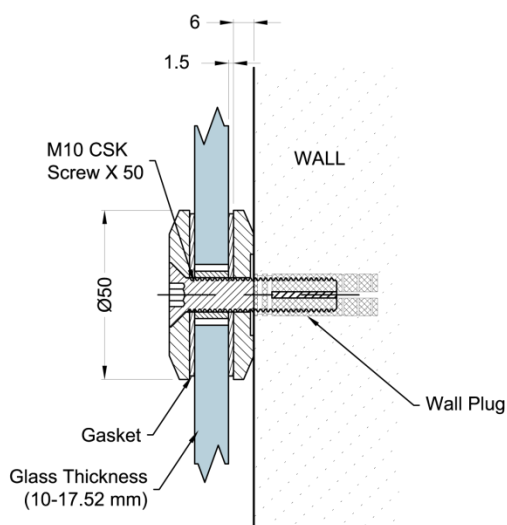
Glass Preparation



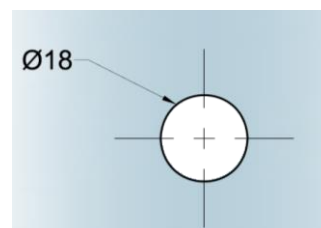
- For 12 – 17.52mm glass thickness
- Ø48 flathead point stud
- Material: SUS304
- Finishes: Satin Stainless Steel

SO8

Glass to Wall Standoff



Glass Preparation



- For 10 – 17.52mm glass thickness
- Ø50 flathead point stud
- comes with M10 x 50 CSK Screw (Stainless Steel)
- Material: SUS304
- Finishes: Satin Stainless Steel

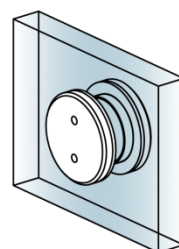
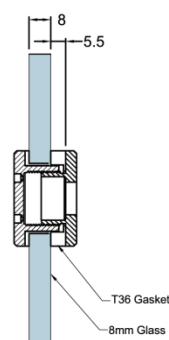
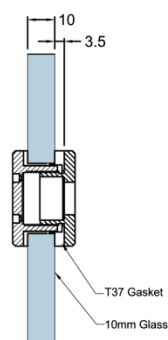
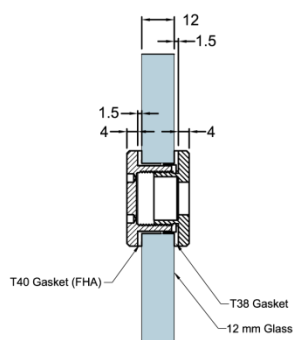
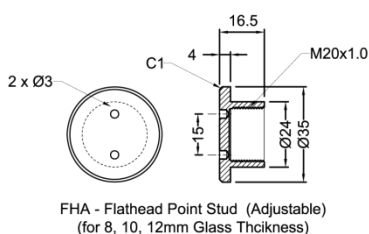
FHA

Flathead Point Stud

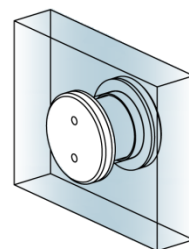
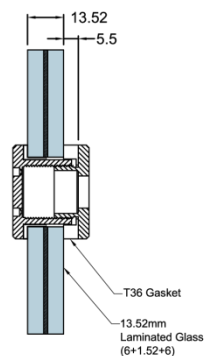
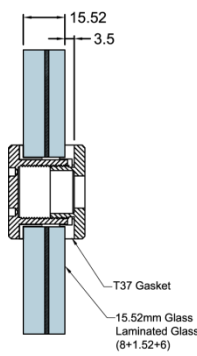
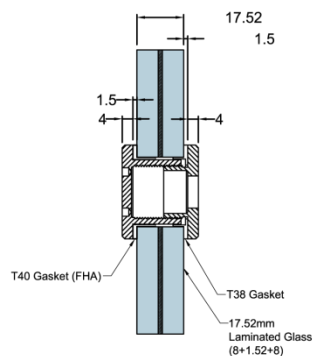
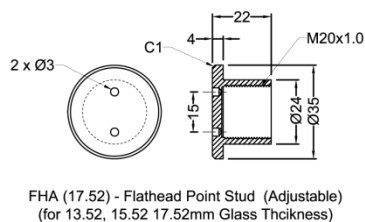


- Ø35mm elevated point stud glass fitting , adjustable
- For 8-12mm glass thickness (**FHA-H35.16**)
For 13.52 - 17.52 mm glass thickness (**FHA-H35.22**)
- Fastened by M8 screw (not included)
- Material: SUS304
- Finishes: Satin Stainless Steel

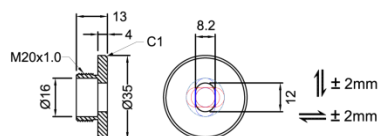
FHA-H35.16



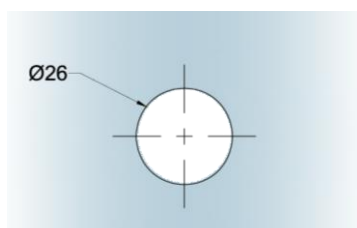
FHA-H35.22



PSB35.13



Glass Preparation



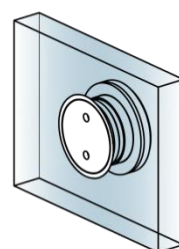
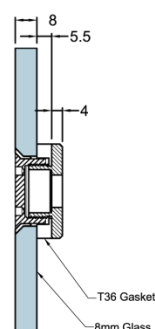
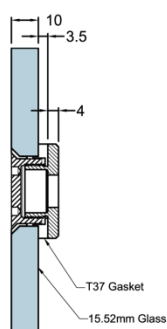
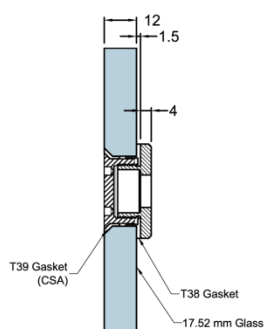
FHA Gasket	for 12mm/17.52mm Glass Thickness	for 10mm/15.52mm Glass Thickness	for 8mm/13.52mm Glass Thickness
T40	T38	T37	T36
1.5	1.5	3.5	5.5

Countersunk Point Stud



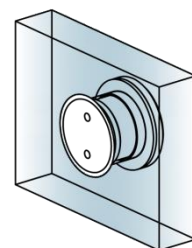
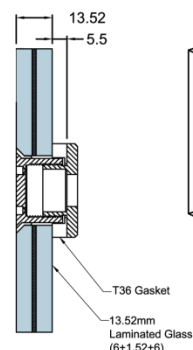
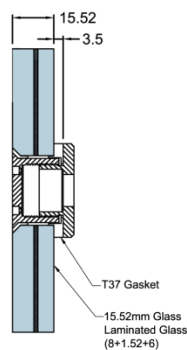
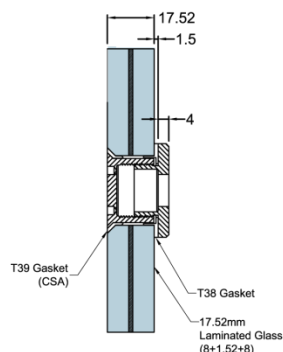
- Ø35mm flush point stud glass fitting, adjustable
- For 8-12mm glass thickness (**CSA-H35.11**)
For 13.52 - 17.52 mm glass thickness (**CSA-H35.17**)
- Fastened by M8 screw (not included)
- Material: SUS304
- Finishes: Satin Stainless Steel

CSA - Countersunk Point Stud (Adjustable)
(for 8, 10, 12mm Glass Thickness)

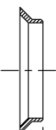
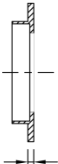




Technical drawing of a mechanical part. The drawing includes a cross-section view on the left and a side view on the right. The cross-section shows two holes, one of which is labeled "2 x Ø3". The side view shows a vertical profile with dimensions: 17.4, 2.2, 28.4, 15, 90°, and Ø24. A label "M20x1.0" points to a threaded section.

CSA (17.52) - Countersunk Point Stud (Adjustable)
(for 13.52, 15.52, 17.52mm Glass Thickness)



Technical drawing of a glass plate with a central hole and chamfered edges. The drawing shows a rectangular plate with a central circular hole. The hole has a diameter of 32 mm with a tolerance of +0.2 mm. The edges of the plate are chamfered at a 90-degree angle. The chamfer width is 3 mm with a tolerance of -0.2 mm. The glass thickness is specified as 8, 10, 12, 13.52, 15.52, and 17.52 mm. The distance from the center of the hole to the edge of the plate is 26 mm.

CSA Gasket	for 12mm/17.52mm Glass Thickness	for 10mm/15.52mm Glass Thickness	for 8mm/13..52mm Glass Thickness
T39  5.85	T38  1.5	T37  3.5	T36  5.5

APPLICATIONS

The systems combine the use of stainless steel components fixing parts and glass panels to accentuate the design simplicity of glass panels facades.

Finishes

- Satin Stainless Steel

Material

- SUS 304

Test Report

TUV SUD PSB Singapore

- Load Capability Test (SO3 & SO4)

RELATED PRODUCTS



Point Fix Systems – Magtec Series



Connectors & Stoppers - Miscellaneous