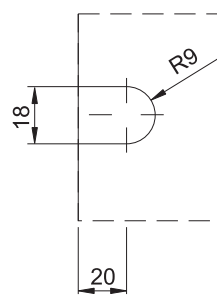
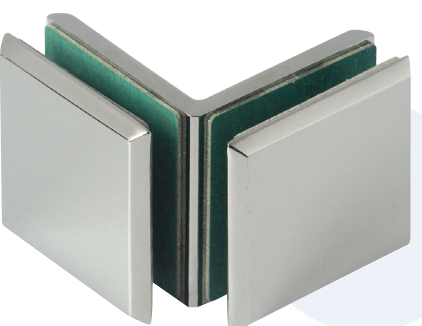


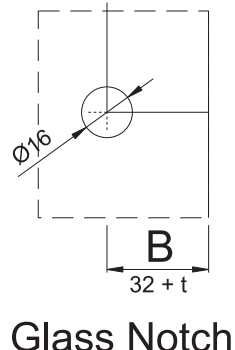
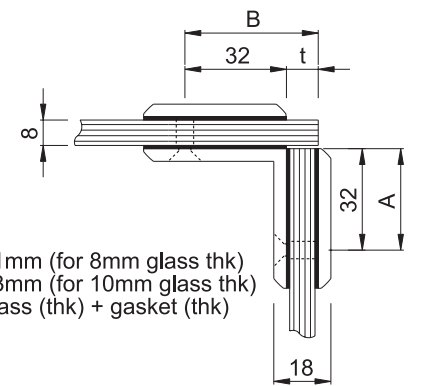
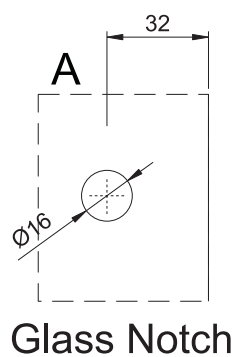
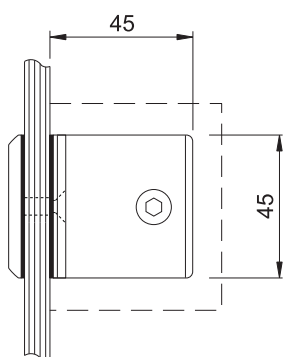
PC406
90° Glass to Wall



U-notch for closer glass gap adjustment (0~5mm)
Glass Notch



PC414
90° Glass to Glass



APPLICATIONS

- Provides mechanical fixing of glass panels.
- Suitable for connecting 8~10mm thick frameless glass panels.
- Various designs to suit various functions:
 - ▶ Glass to Wall 90°
 - ▶ Glass to Glass 90°, 135°, 180°

FINISHES

- Polished chrome plated
- Satin chrome plated
- Physical vapour deposition

MATERIAL

- Solid Brass

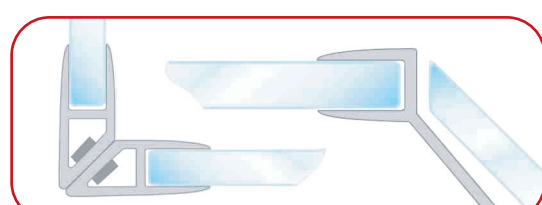
RELATED PRODUCTS



Shower Hinges - Emery Series



Crossbar Connectors - Caprice Series

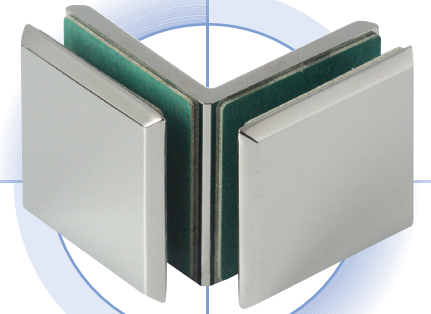
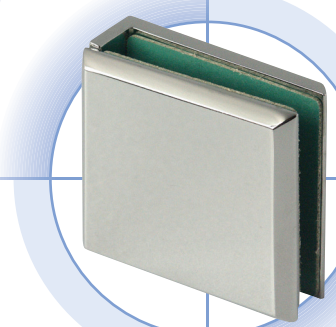


Vinyl Clip Seals - Gerda Series



Preference Manufacturing Pte Ltd

No. 2 Kallang Pudding Road, #01-02/06/07 Mactech Industrial Building, Singapore 349307
Tel: (65) 6746 5185 Fax: (65) 6746 8749 Email: enquiry@preference.com.sg Website: www.preference.com.sg



PC400
SERIES

