

P&M[®] Shower Hinges

EMERY

APPLICATIONS

- Suitable for 8mm - 12mm thick glass panels.
- Width of up to 750mm with a maximum weight of 45kgs per 2 hinges.
- Self-closing function approximately from 25°

FINISHES

- Polish chrome plated
- Satin chrome plated
- Physical vapour deposition

MATERIAL

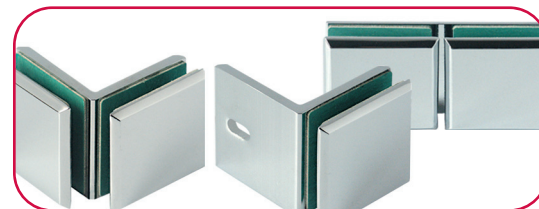
- Solid Brass

TEST REPORT

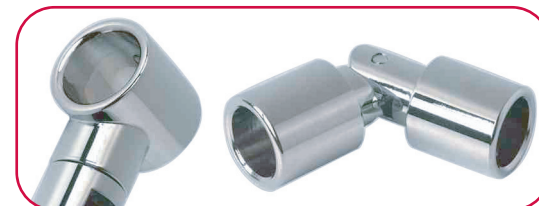
PSB Corporation, Singapore

- BS7352 : 1990 - Endurance Test (100.000 cycles)
- ASTM B117-03 Salt Spray Test (240 hours @ 5±1% w/w NaCl)

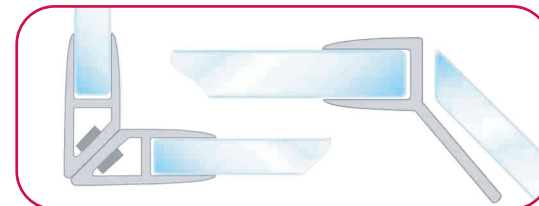
RELATED PRODUCTS



Shower Connectors - Deane Series



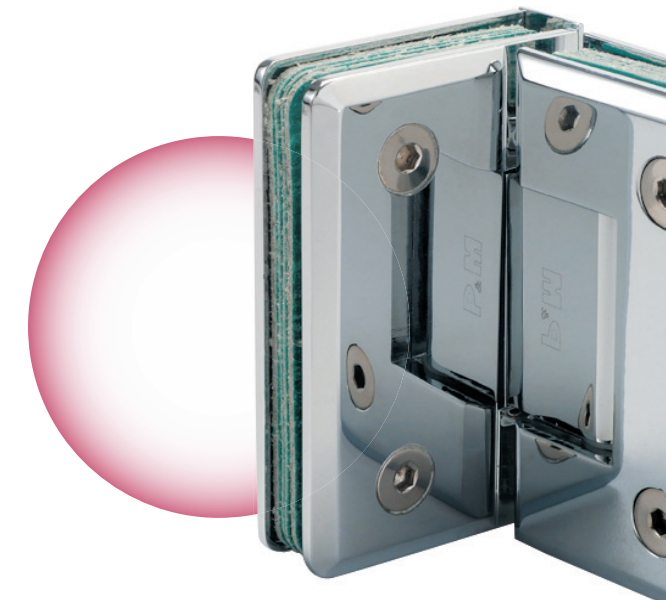
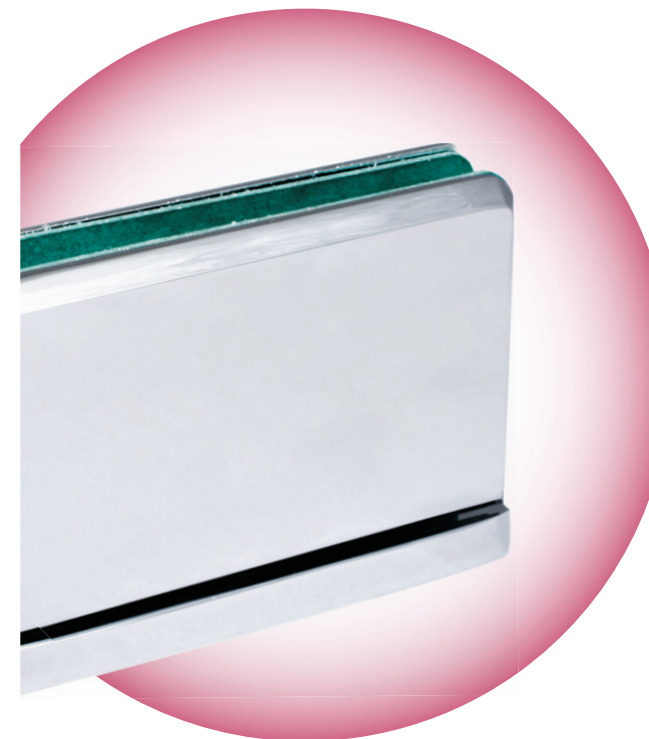
Crossbar Connectors - Caprice Series



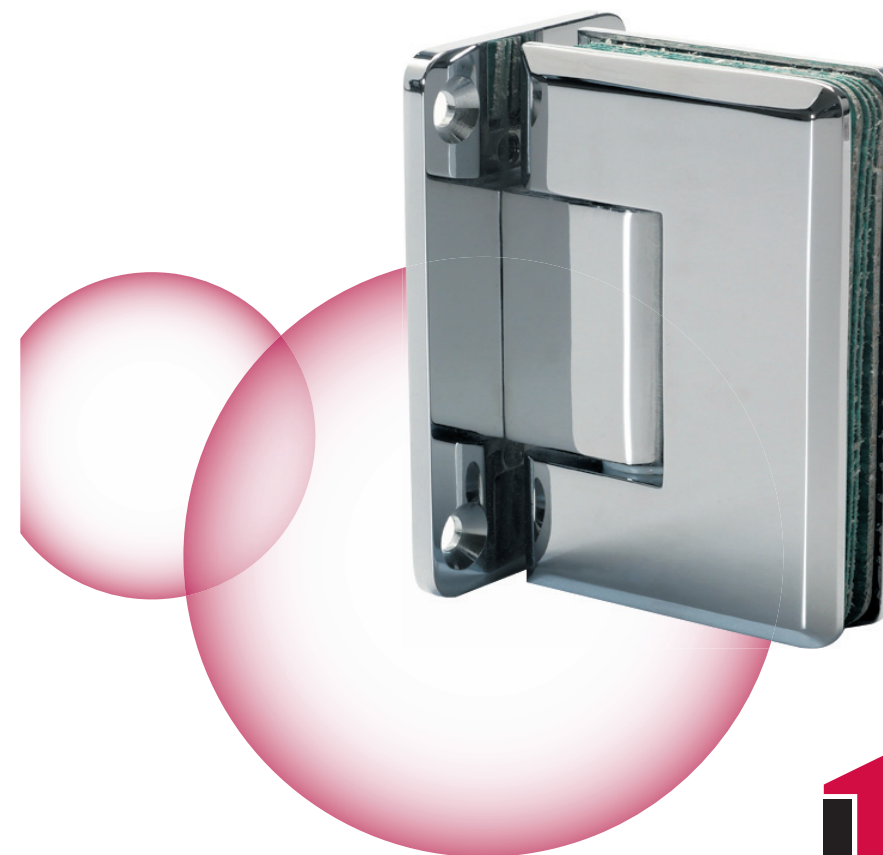
Vinyl Clip Seals - Gerda Series

P&M[®] Shower Hinges

EMERY



GX 990 SERIES

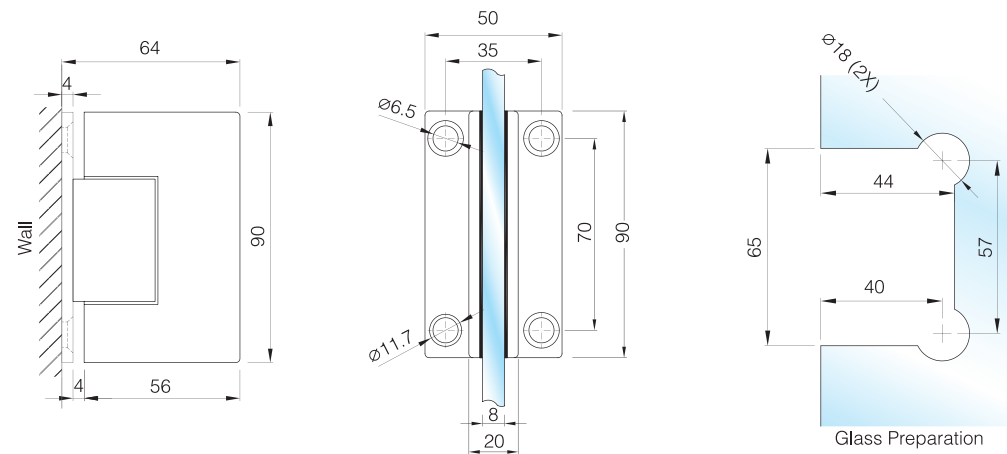


Preference
The Preferred Name in Entrance Systems

Preference Manufacturing Pte Ltd

No. 2 Kallang Pudding Road, #01-02/06/07 Mactech Industrial Building, Singapore 349307
Tel: (65) 6746 5185 Fax: (65) 6746 8749 Email: enquiry@preference.com.sg Website: www.preference.com.sg

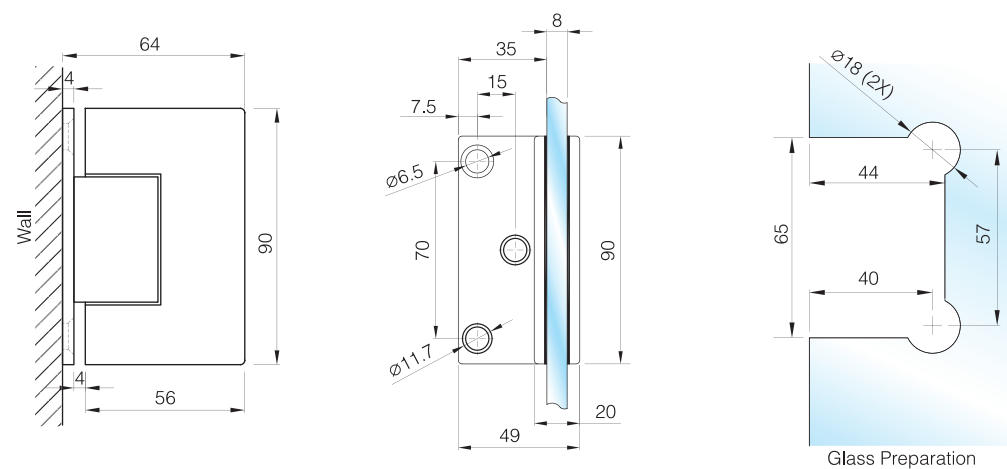
Preference
The Preferred Name in Entrance Systems



GX990.1

Glass to Wall

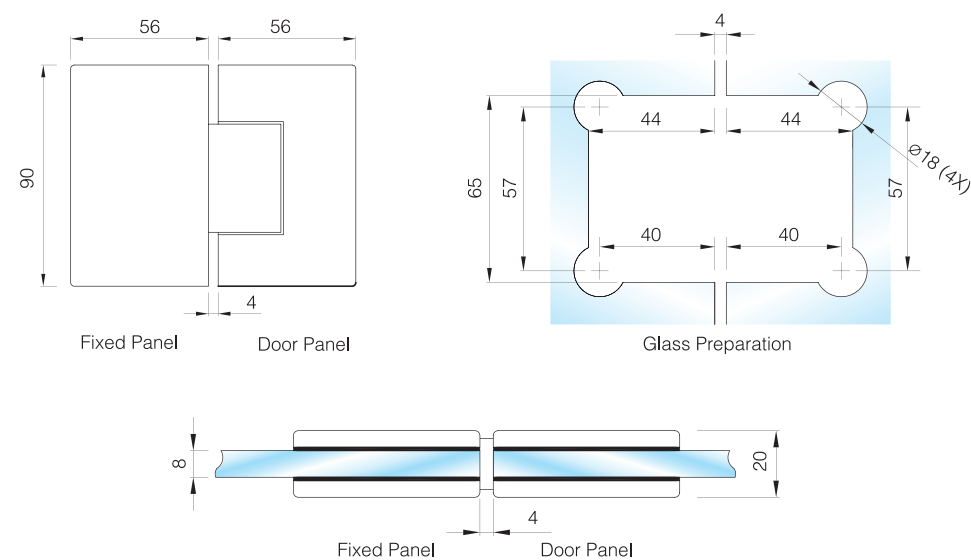
Dimensions



GX990.1os

Glass to Wall

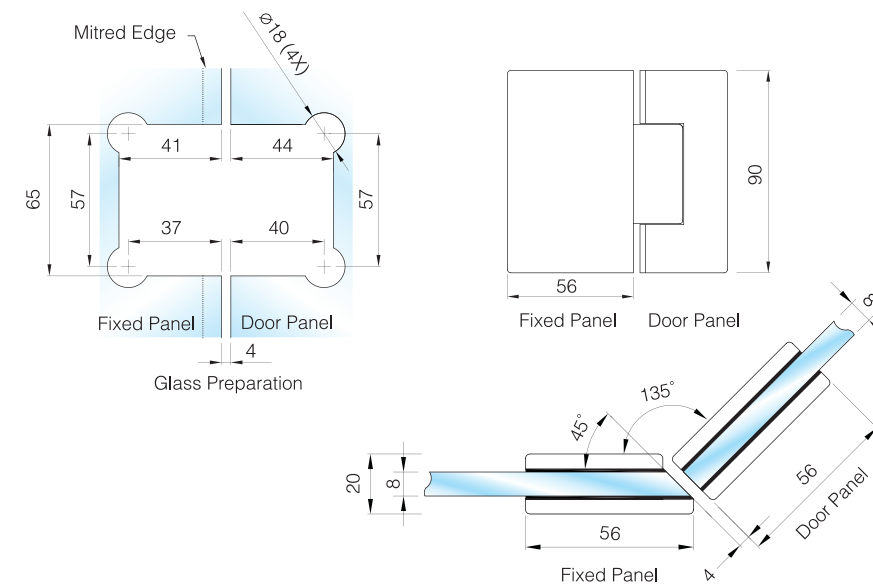
Dimensions



GX990.2

Glass to Glass (180°)

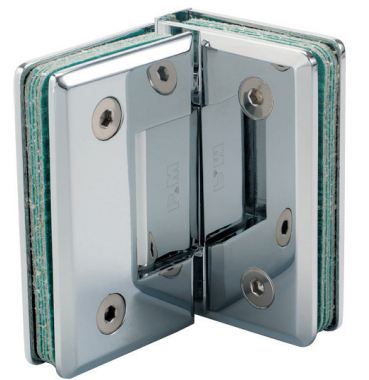
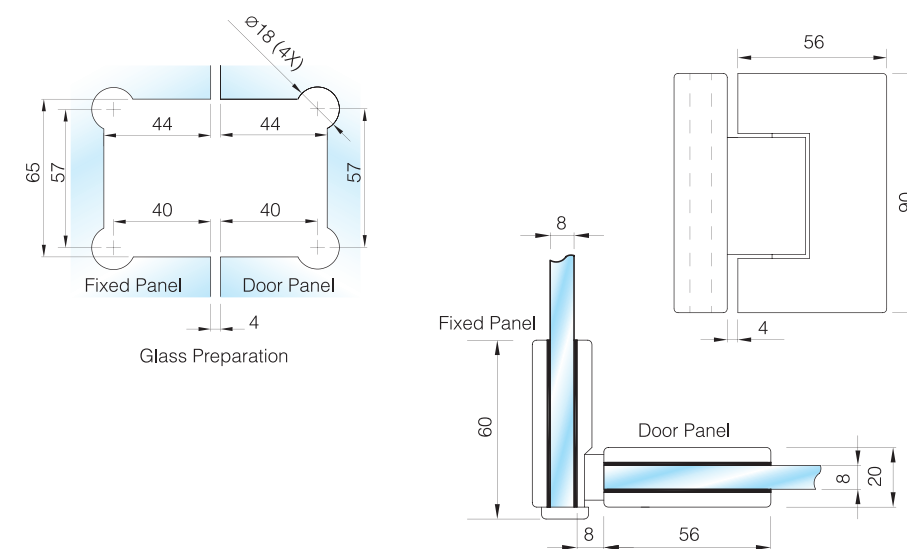
Dimensions



GX990.3

Glass to Glass (135°)

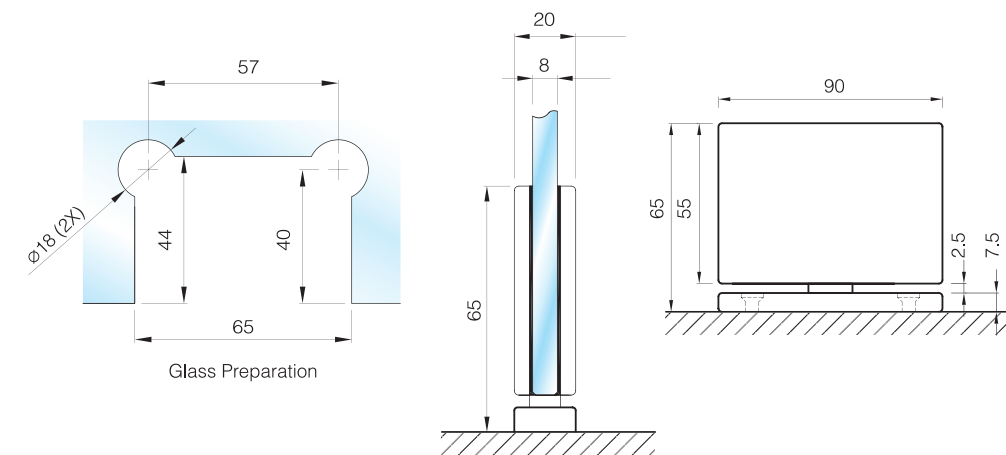
Dimensions



GX990.4

Glass to Glass (90°)

Dimensions



GX990.5

360° Floor Mounted Vertically Pivoted

Dimensions