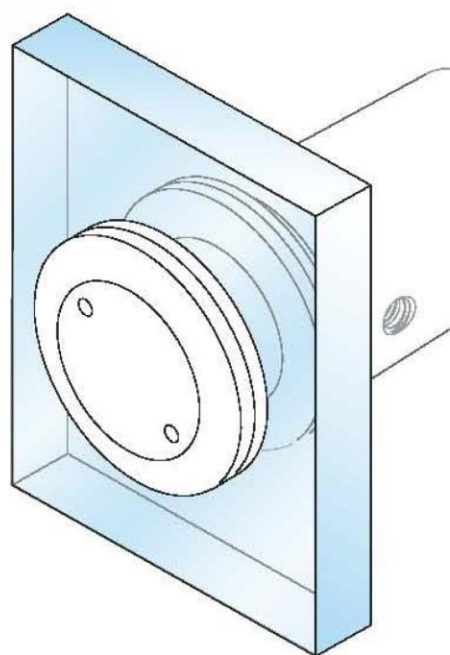


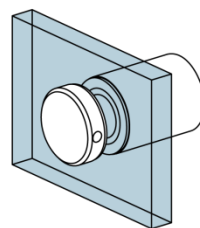
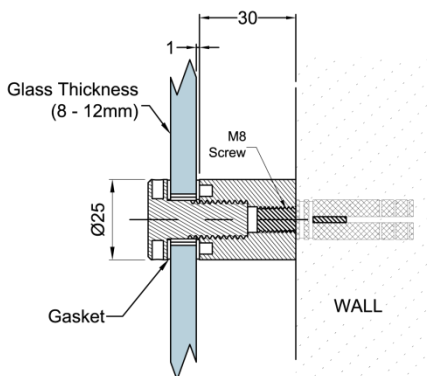


STANDOFF

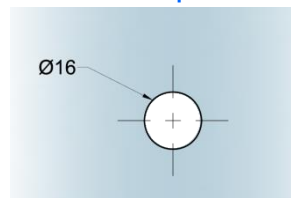


SO2

Glass to Wall Standoff



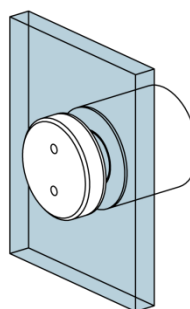
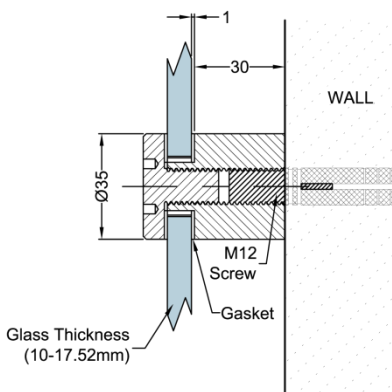
Glass Preparation



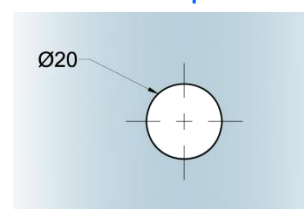
- For 8, 10, 12mm glass thickness
- Ø25mm x 30mm height barrel
- Material: SUS304
- Finishes: Satin Stainless Steel

SO3

Glass to Wall Standoff



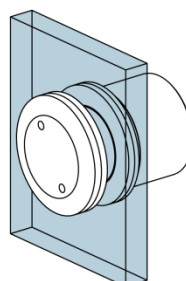
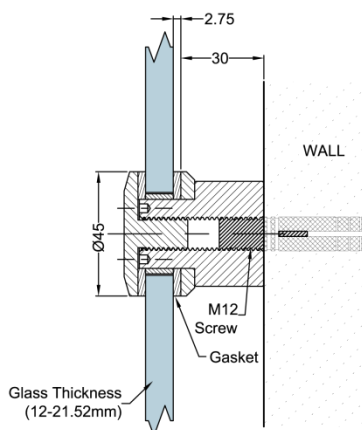
Glass Preparation



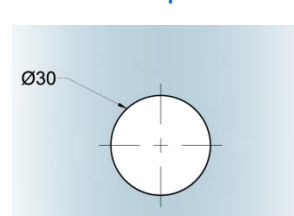
- For 10 – 17.52mm glass thickness
- Ø35mm x 30mm height barrel
- Material: SUS304
- Finishes: Satin Stainless Steel

SO4

Glass to Wall Standoff



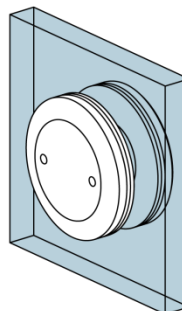
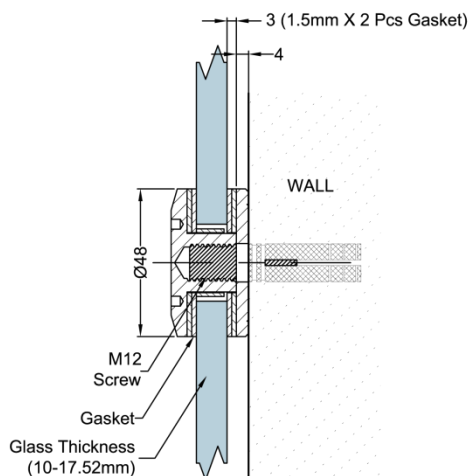
Glass Preparation



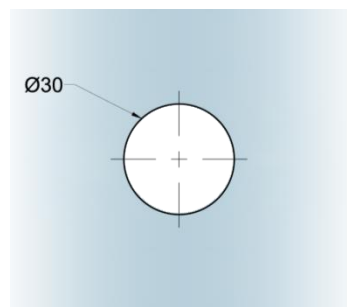
- For 12 – 21.52mm glass thickness
- Ø45mm flathead point stud
- Barrel : Ø38mm x 30mm height
- Material: SUS304
- Finishes: Satin Stainless Steel

SO5

Glass to Wall Standoff



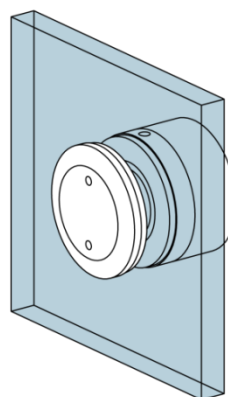
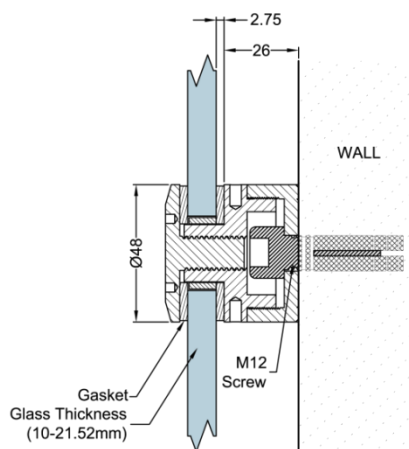
Glass Preparation



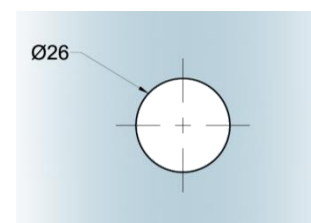
- For 10 – 17.52mm glass thickness
- Ø48mm flathead point stud
- Material: SUS304
- Finishes: Satin Stainless Steel

SO6

Glass to Wall Standoff



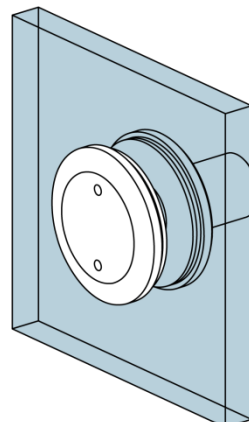
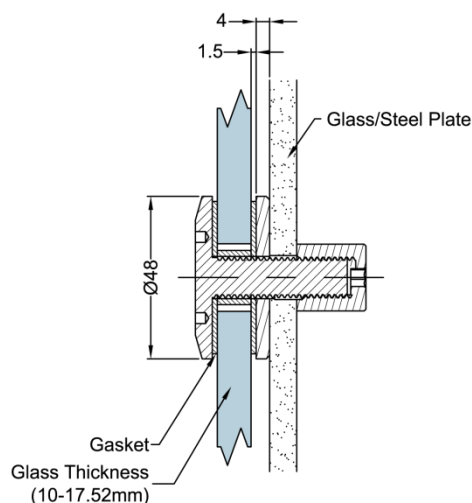
Glass Preparation



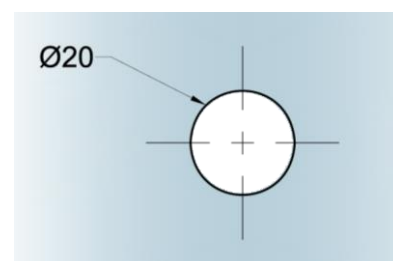
- For 10 – 21.52mm glass thickness
- Ø48mm x 26mm height Barrel
- Material: SUS304
- Finishes: Satin Stainless Steel

SO7

Glass to Wall Standoff



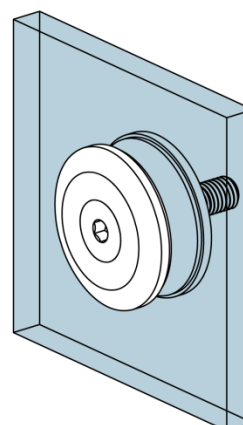
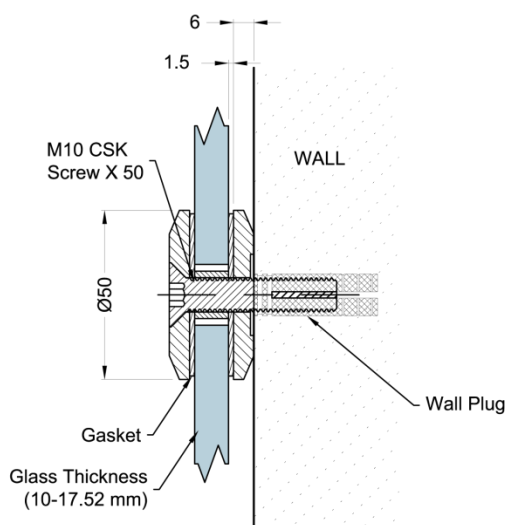
Glass Preparation



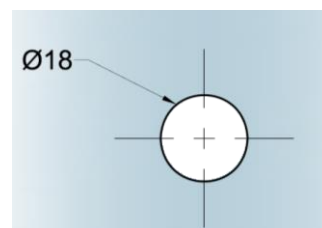
- For 12 – 17.52mm glass thickness
- Ø48 flathead point stud
- Material: SUS304
- Finishes: Satin Stainless Steel

SO8

Glass to Wall Standoff



Glass Preparation



- For 10 – 17.52mm glass thickness
- Ø50 flathead point stud
- Material: SUS304
- Finishes: Satin Stainless Steel

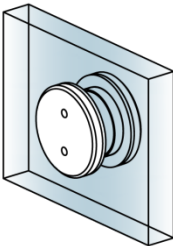
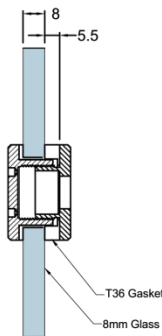
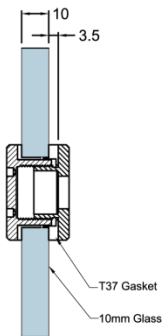
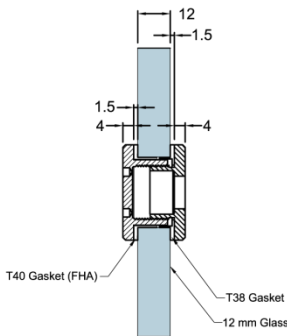
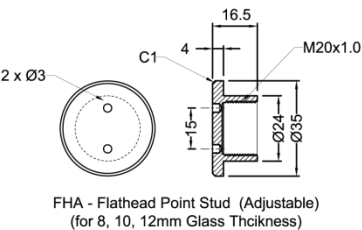
FHA

Flathead Point Stud

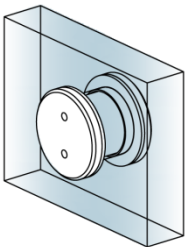
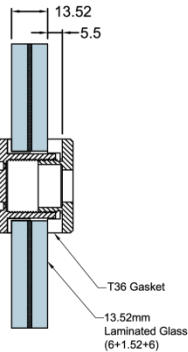
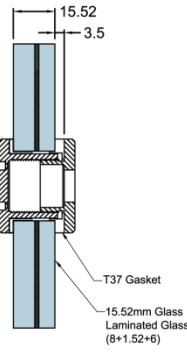
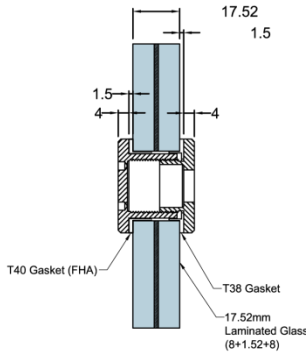
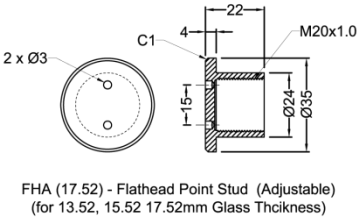


- Ø35mm elevated point stud glass fitting , adjustable
- For 8-12mm glass thickness (**FHA-H35.16**)
For 13.52 - 17.52 mm glass thickness (**FHA-H35.22**)
- Fastened by M8 screw (not included)
- Material: SUS304
- Finishes: Satin Stainless Steel

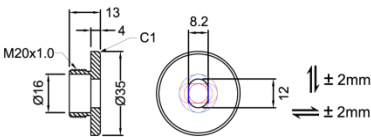
FHA-H35.16



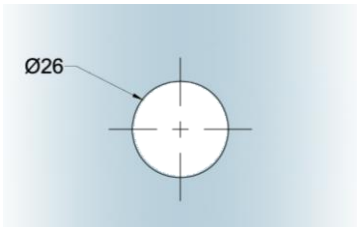
FHA-H35.22



PSB35.13



Glass Preparation



FHA Gasket	for 12mm/17.52mm Glass Thickness	for 10mm/15.52mm Glass Thickness	for 8mm/13.52mm Glass Thickness
T40	T38	T37	T36
1.5	1.5	3.5	5.5

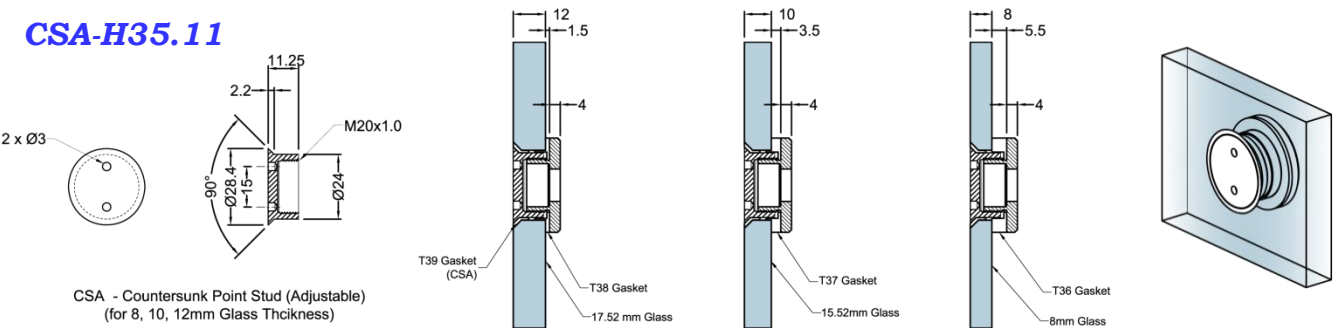
CSA

Countersunk Point Stud

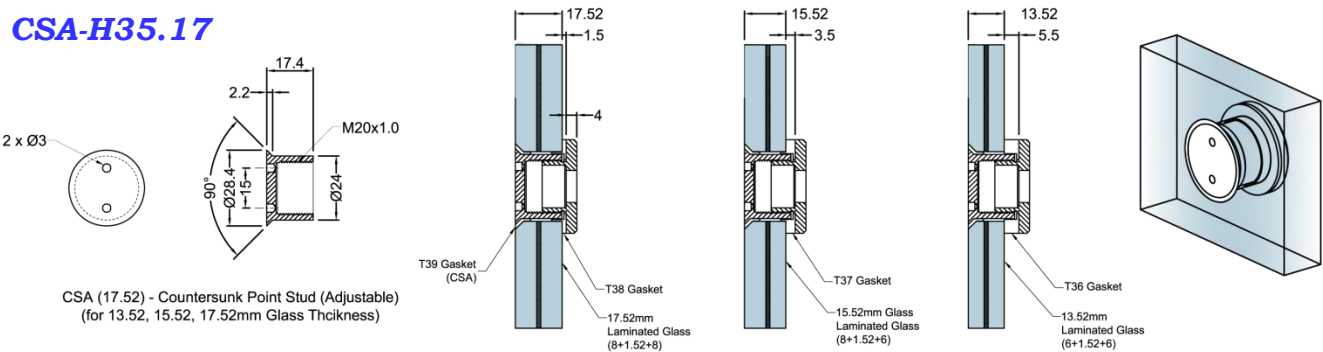


- Ø35mm flush point stud glass fitting, adjustable
- For 8-12mm glass thickness (**CSA-H35.11**)
For 13.52 - 17.52 mm glass thickness (**CSA-H35.17**)
- Fastened by M8 screw (not included)
- Material: SUS304
- Finishes: Satin Stainless Steel

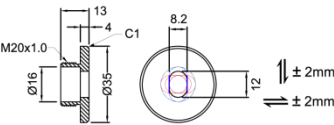
CSA-H35.11



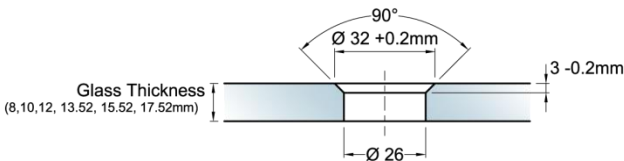
CSA-H35.17







PSB35.13



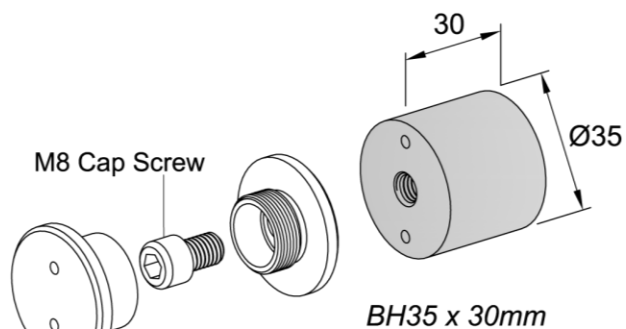
**Glass Preparation
countersunk hole**



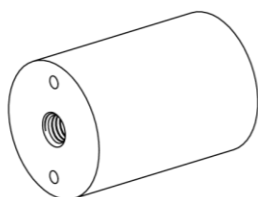
CSA Gasket	for 12mm/17.52mm Glass Thickness	for 10mm/15.52mm Glass Thickness	for 8mm/13.52mm Glass Thickness
T39	T38	T37	T36
 5.85	 1.5	 3.5	 5.5

BH35 Modular Standoff

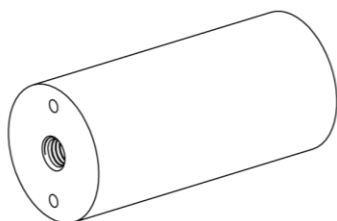
30mm, 50mm, 75mm and 100mm height to receive CSA countersunk and FHA flathead adjustable point studs



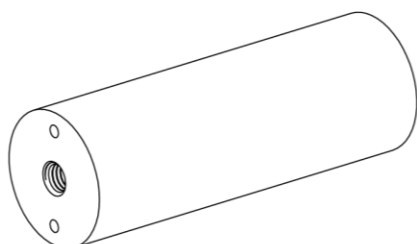
FHA 6 - 12.52



BH35 x 50mm

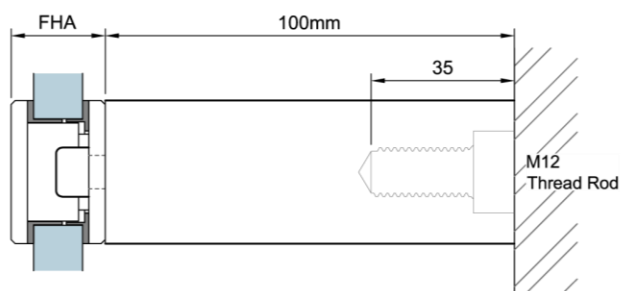
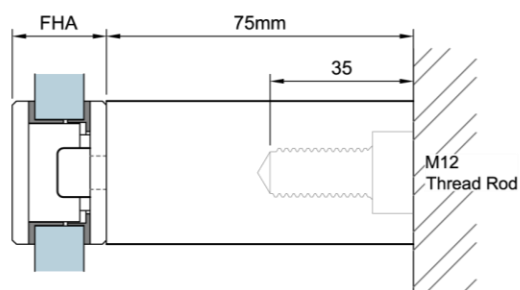
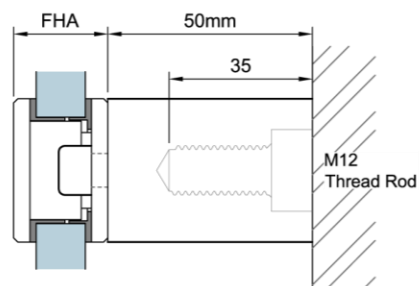
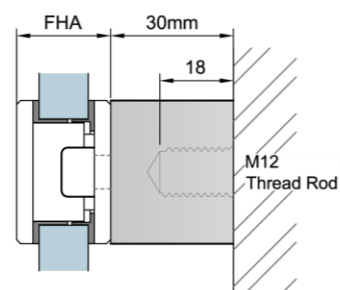
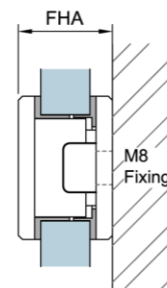


BH35 x 75mm



BH35 x 100mm

FHA Point Stud



APPLICATIONS

The systems combine the sue of stainless steel components fixing parts and glass panels to accentuate the design simplicity of glass panels facades.

Finishes

- Satin Stainless Steel

Material

- SUS 304

Test Report

- Load Capability Test (SO3 & SO4)

Due to the company's policy of continuous product development and enhancement, the specifications and details contained in this brochure are subject to alteration without prior notice.

The dimensions, details, specifications and statements made herein or by our representatives arising out of any enquiries are given for information purposes only. They are not intended to have any legal effect and the company will not be bound thereby. The company will only accept obligations which are expressly negotiated for, and agreed and incorporated into written agreements made specifically with its respective customers.

P&M-E20160810

RELATED PRODUCTS



Point Fix Systems – Magtec Series



Connectors & Stoppers - Miscellaneous