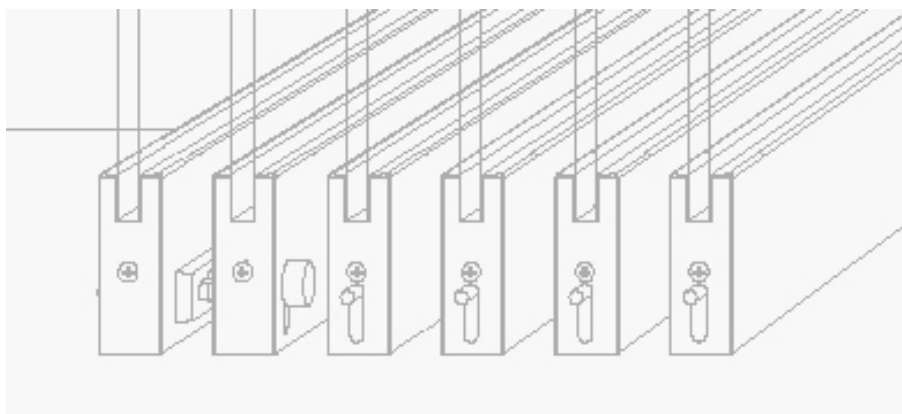




SLF300

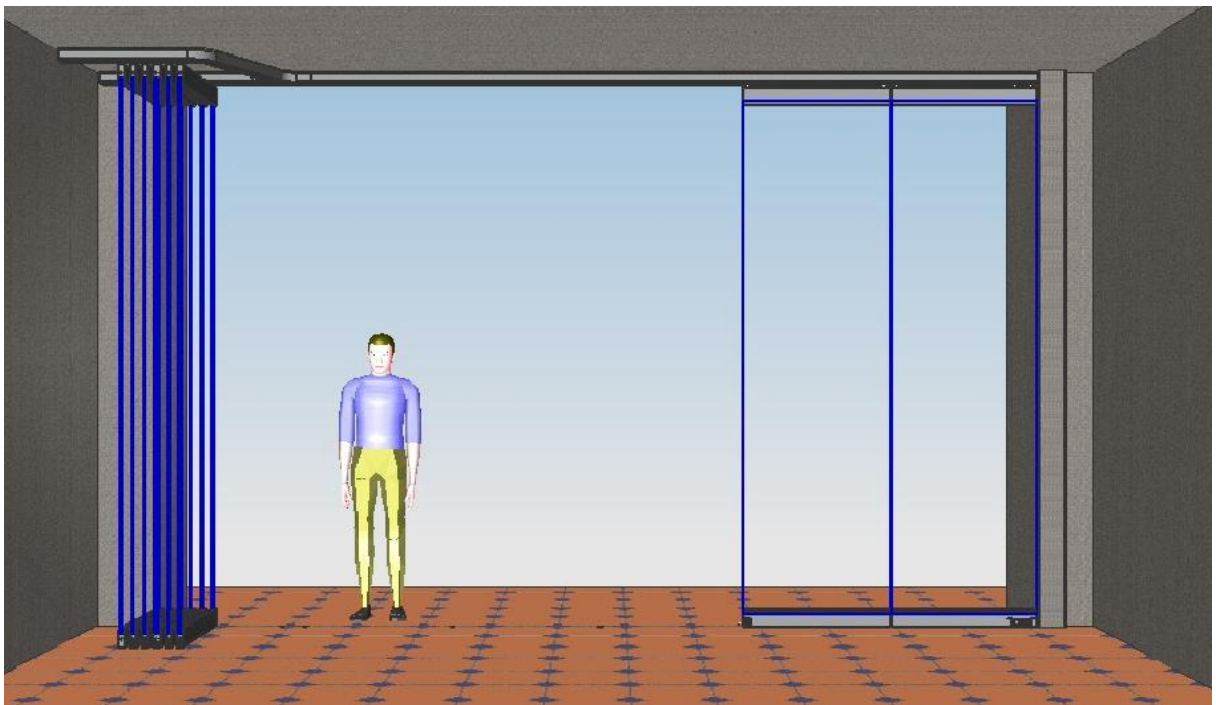
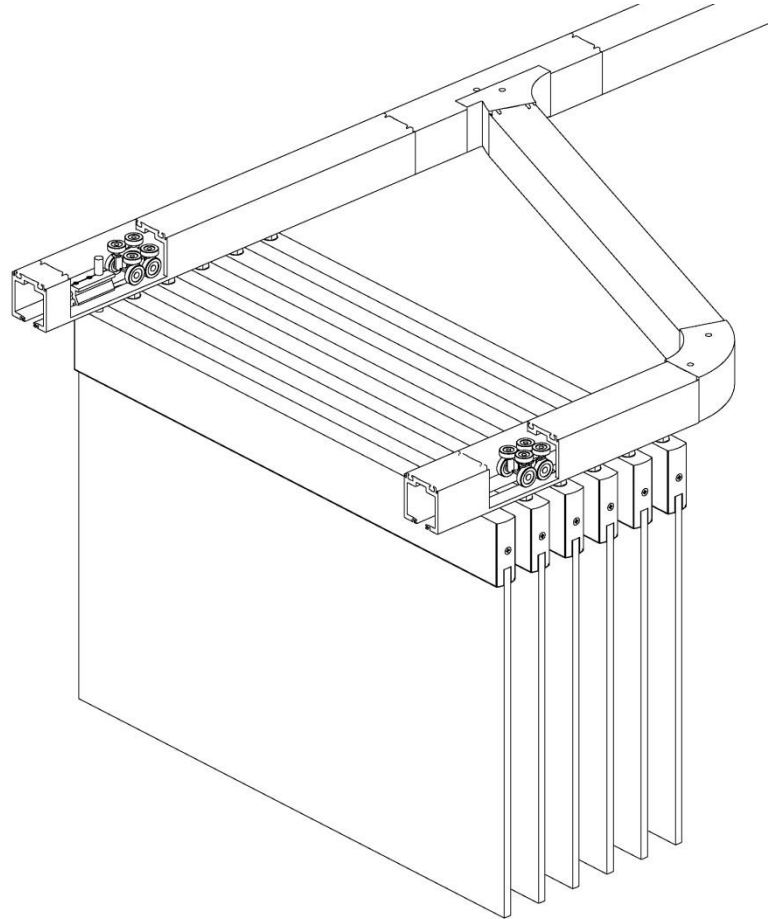
Slide and Stack Glass Panel System

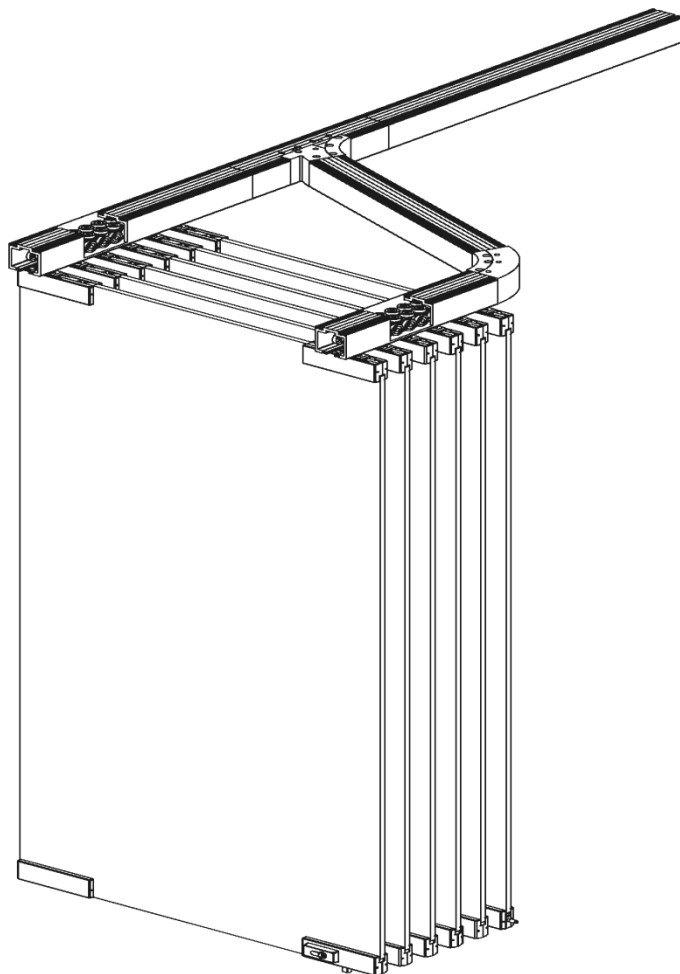


SLF300

SLF300 Slide and Stack Glass Panel System features a comprehensive combination of aluminium top track that facilitates flexibility in design layout. This system is able to carry frameless glass door panels of up to 4000mm in height and width of up to 1100mm.

With its robust carriage roller made up of stainless steel body with eight ball bearing wheels, it allows better weight distribution and stability, thereby eliminating excessive swaying and reducing the track to wheel friction thus translating smooth and effortless sliding motion.





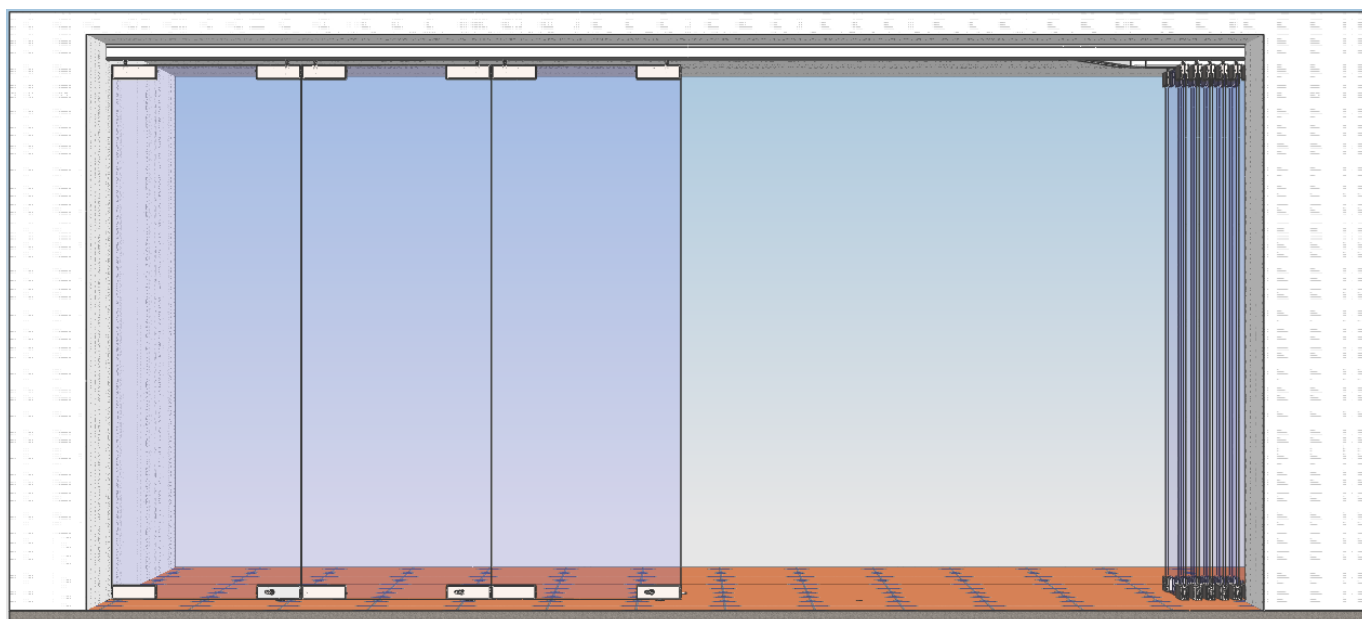
SLF300 complements both maximum shop front area and close customer proximity as you have a choice of various parking space layout to dock the individual frameless glass panels.

It also enhances maximum security with various security locking devices (key lock; thumb turn lock).

SLF300 comprises of sliding door intermediate panels and swing door pivot panel. In addition, you have a choice of both aluminum clip-on rail covers or stainless steel rail-covers of both polish and satin finish.

SLF300P

For maximum vision, the system is now available in standard universal patch fittings.



View from outside

Cross Section (Intermediate Panels) with DRM80 Rails

SLF300 with DRM80 Rails is available with the following components:

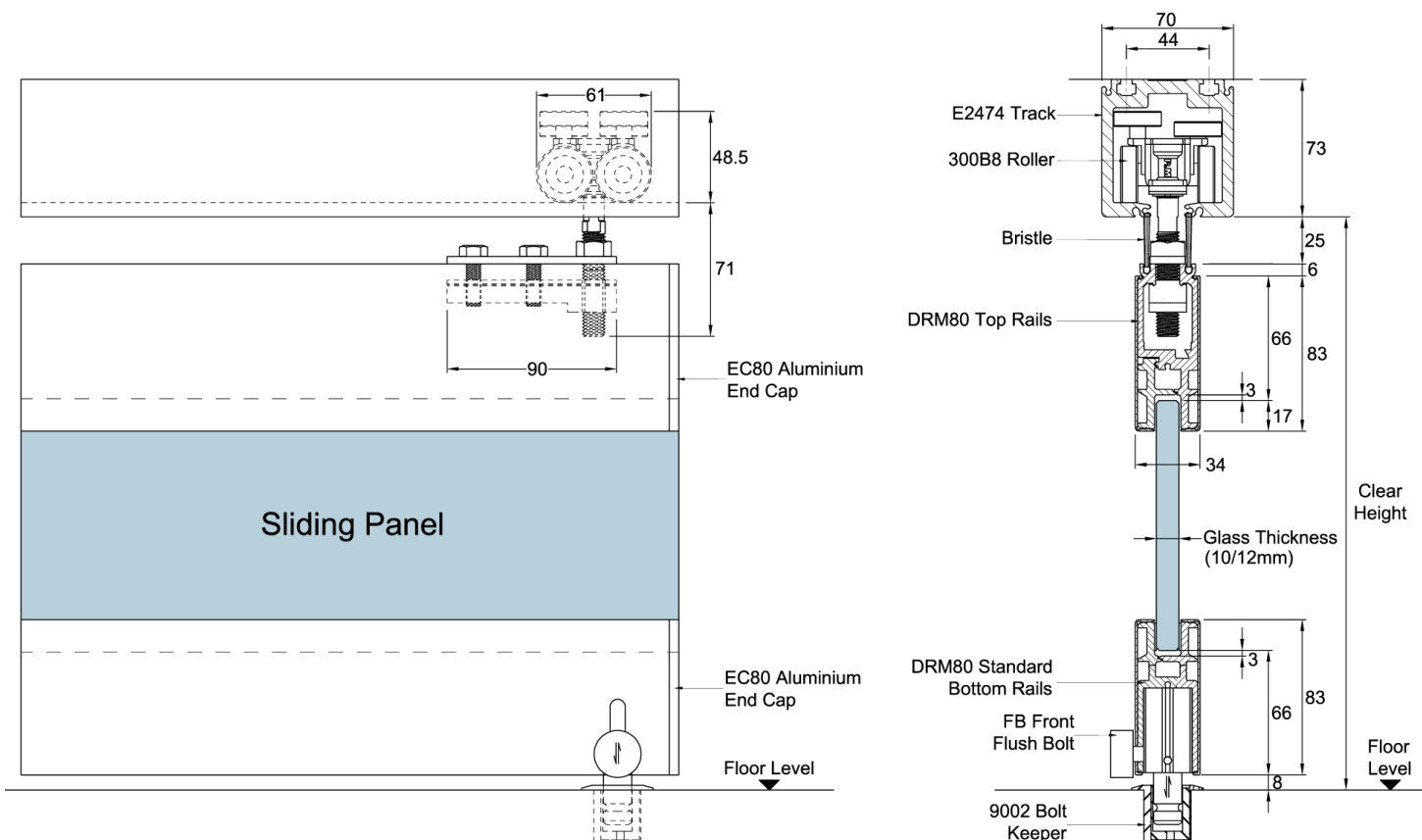
- Main Top Tracks
- Sliding Door Panels comprising of:
 - DRM80 Top & Bottom Rails (1set / panel)
 - 8pt Carriage Rollers (2nos / panel)
 - Rubber Seal / Bristle
 - Flush Bolts
 - End Caps
 - Bolt Keepers
- Pivot Door Panel comprising of:
 - DRM80 Top & Bottom Rails (1set / panel)
 - Top Pivot / End Stopper
 - Bottom Pivot
 - Rubber Seal / Bristle
 - Euro-profile Key / Thumb Turn Cylinders
 - Lock Bolt
 - End Caps
 - Bolt Keeper
- Parking Bay comprising of:
 - Junction Track (90° / 110°)
 - Elbow Track (90° / 110°)

Upon order, please specify the following:

- Length of Rails
(Glass panel width is required)
- Door Rails Covers
Aluminium Snap-On (Natural Anodised)
Stainless Steel (Polish/Satin)
- Glass Thickness
(10 / 12mm)
- Key Combinations
(Independent / Key-Alike)

Note:

- Total number of panels per system is determined by:
Total clear opening width
Per glass panel width (ne: 1000mmL)
Number of Parking Bay
- SUS316 stainless steel cover is available subject to availability.
- Glass thru-hole fixing is recommended for door panels with $\geq 3\text{m}$ height.



Cross Section (Intermediate Panels) with DRM100 Rails

SLF300 with DRM100 Rails is available with the following components:

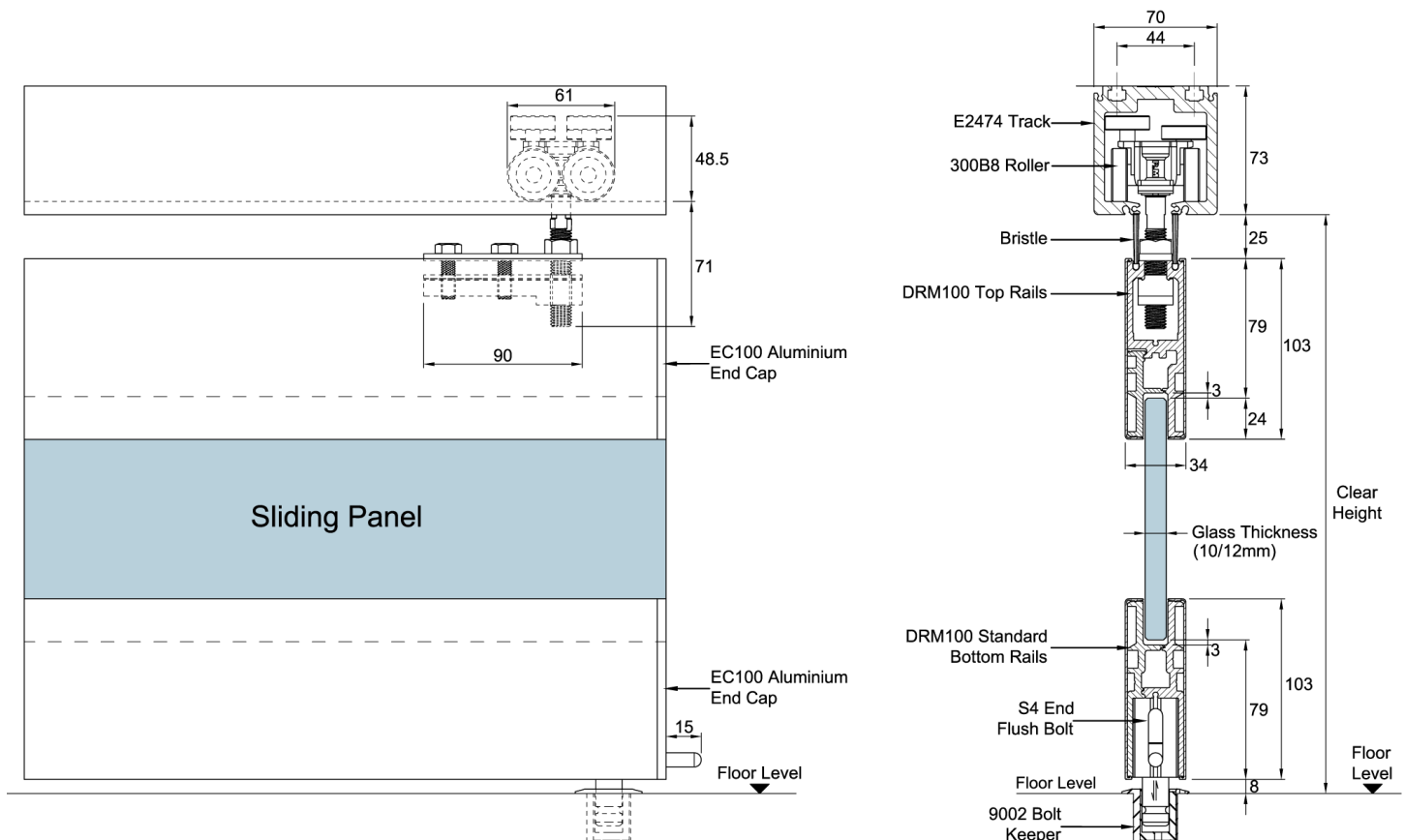
- Main Top Tracks
- Sliding Door Panels comprising of:
 - DRM100 Top & Bottom Rails (1set / panel)
 - 8pt Carriage Rollers (2nos / panel)
 - Rubber Seals / Bristles
 - Flush Bolts
 - End Caps
 - Bolt Keepers
- Pivot Door Panel comprising of:
 - DRM100 Top & Bottom Rails (1set / panel)
 - Top Pivot / End Stopper
 - Bottom Pivot
 - Rubber Seals / Bristles
 - Euro-profile Key / Thumb Turn Cylinders
 - Lock Bolt
 - End Caps
 - Bolt Keeper
- Parking Bay comprising of:
 - Junction Track (90° / 110°)
 - Elbow Track (90° / 110°)

Upon order, please specify the following:

- Length of Rails
(Glass panel width is required)
- Door Rails Covers
 - Aluminium Snap-On (Natural Anodised)
 - Stainless Steel (Polish/Satin)
- Glass Thickness
(10 / 12mm)
- Key Combinations
(Independent / Key-Alike)

Note:

- Total number of panels per system is determined by:
 - Total clear opening width
 - Per glass panel width (ne: 1000mmL)
 - Number of Parking Bay
- SUS316 stainless steel cover is available subject to availability.
- Glass thru-hole fixing is recommended for door panels with $\geq 3\text{m}$ height.



SLF300P

Slide and Stack Glass Panel in Patch Fitting

Available with the following components:

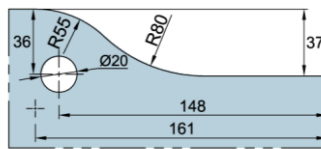
- E2474 Main Top Track
- Bristle (Attached to E2474 Main Top Track)
- Sliding Door Panels comprising of:
 - 300B8-83 8pt Carriage Rollers (2nos / panel)
 - PSAS 300T (Fixed) Patch Hanger (1no / panel)
 - PSAS 300T (Adjustable) Patch Hanger (1no / panel)
 - PSAS 300F Patch Keeper (1no / panel)
 - PSAS 300M Patch with Side Bolt or
 - PSAS 300B Corner Lock (1no / panel)
 - Bolt Keeper
- Pivot Door Panel comprising of:
 - PD 20 Top Patch (1no)
 - 300TP Top Pivot (1no)
 - PD10 Bottom Patch (1no)
 - PD15 Bottom Pivot (1no)
 - PL50 Patch Lock (1no)
 - Bolt Keeper (1no)
- Parking Bay comprising of:
 - Junction Track (90° / 110°)
 - Elbow Track (90° / 110°)
 - End Stopper

Sliding Door Panel

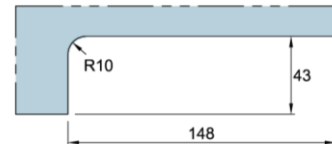
- Maximum Door Weight: 100kg
- Maximum Door Width: 1000mm
- Maximum Door Height: 3000mm
- Maximum Glass Thickness: 12mm

Note:

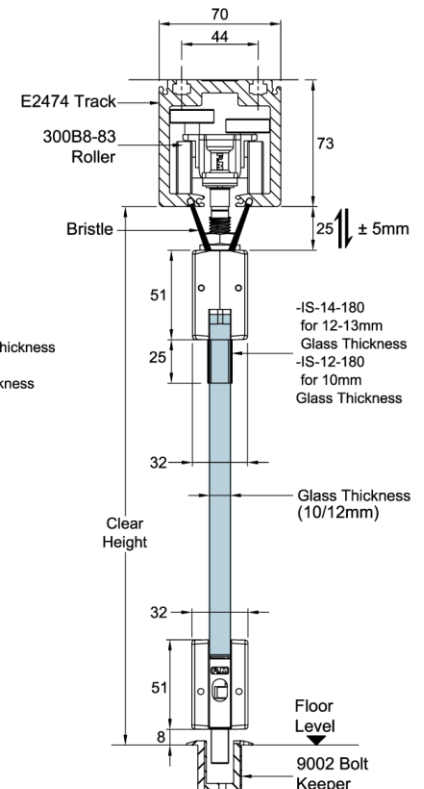
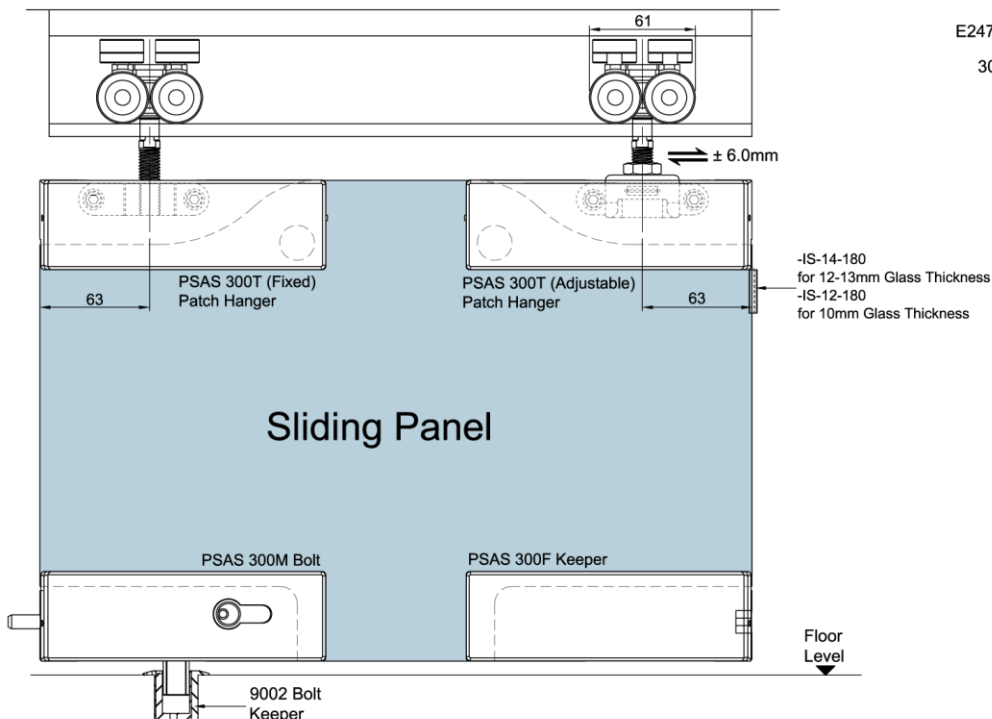
- Glass Preparation Required
- Total number of panels per system is determined by:
 - Total clear opening width
 - Per glass panel width (ne: 1000mmL)
 - Number of Parking Bay

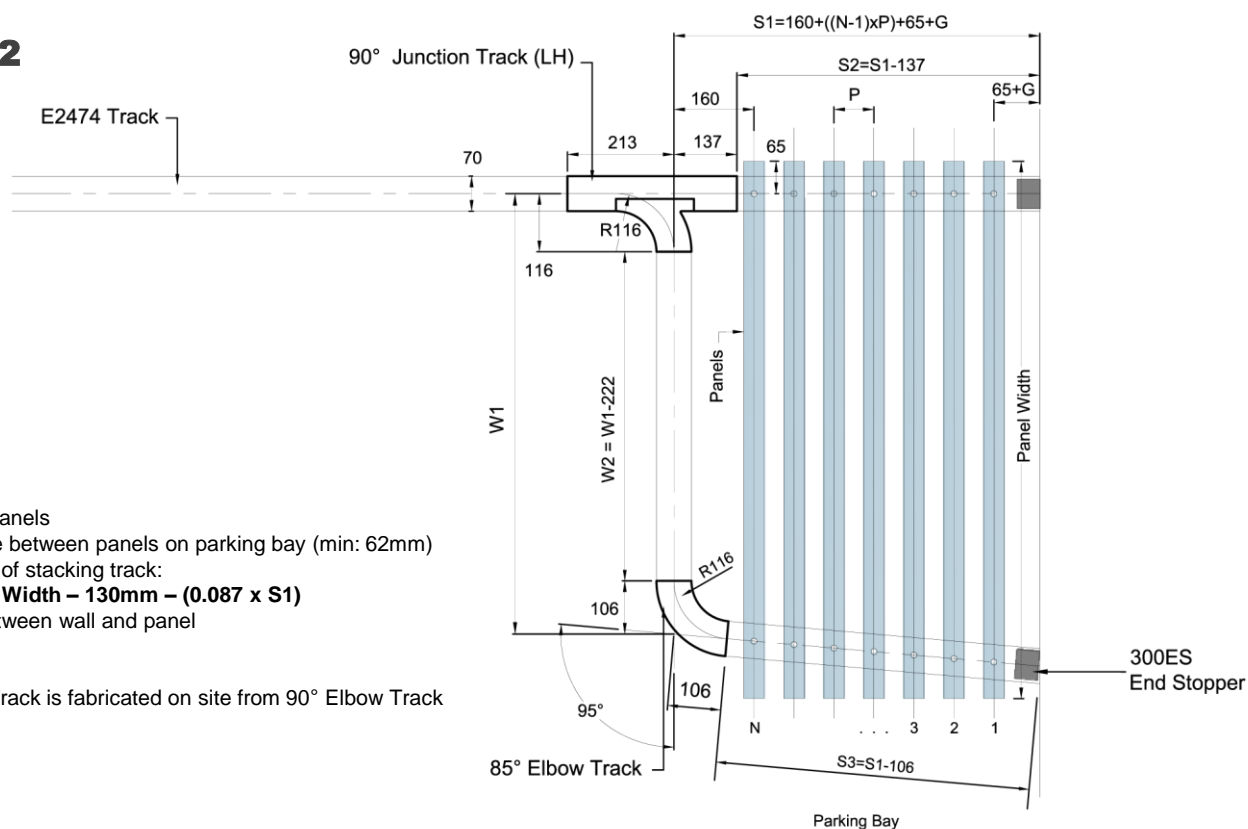


Glass Preparation for PSAS 300T



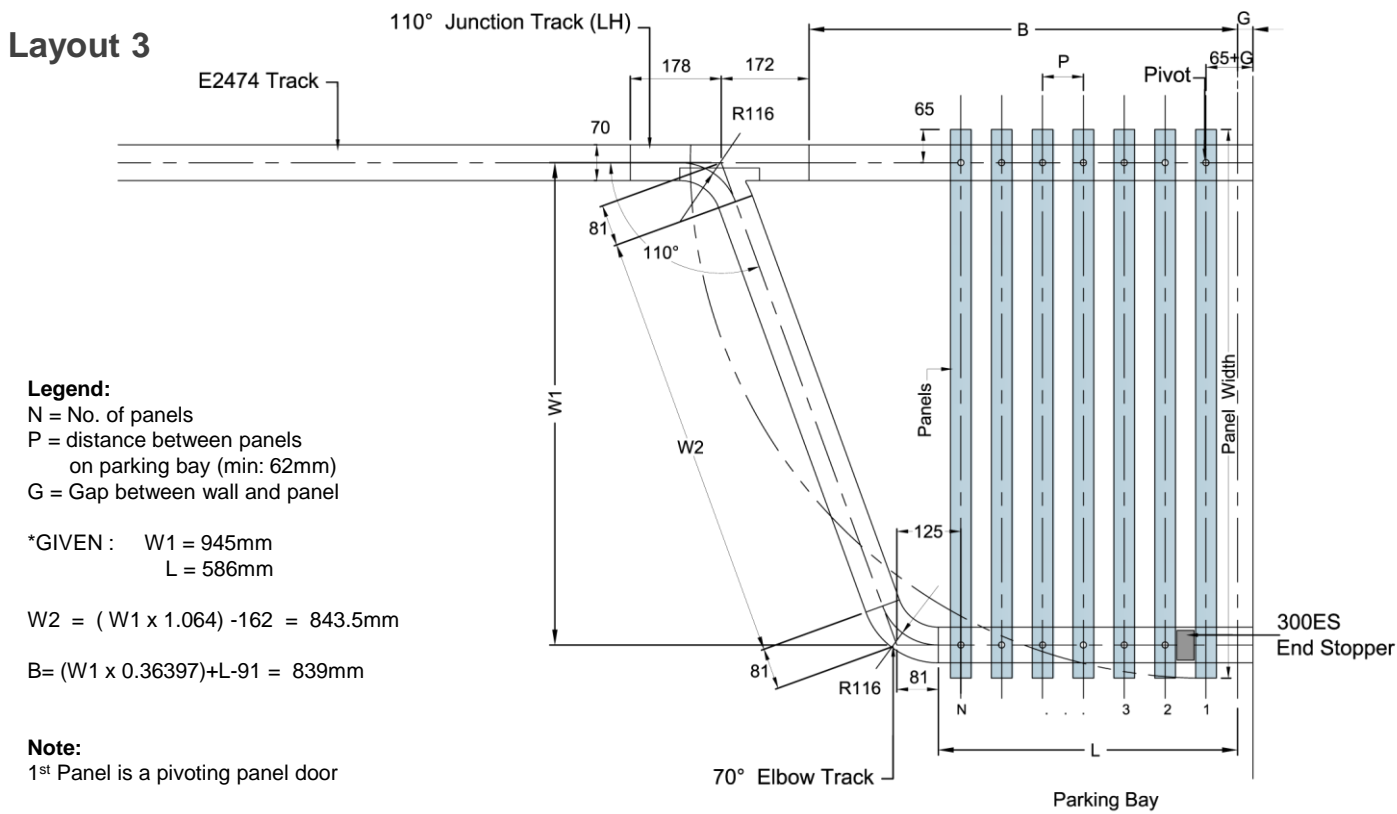
Glass Preparation for PSAS 300M and PSAS 300F



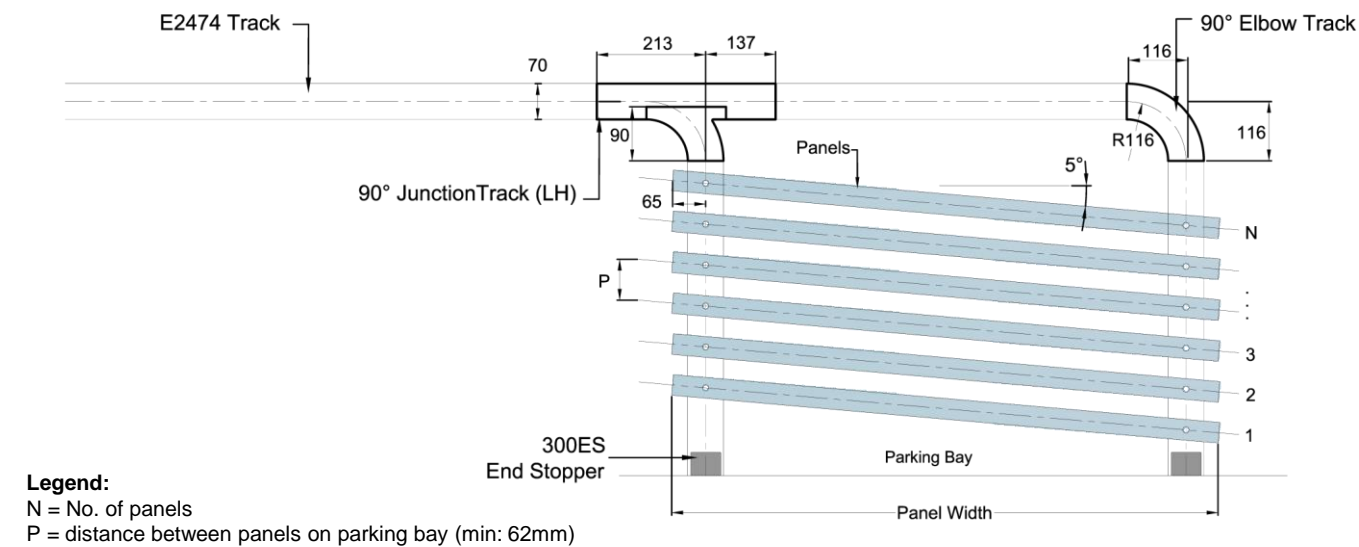


Plan View of Parking Bay

Layout 3

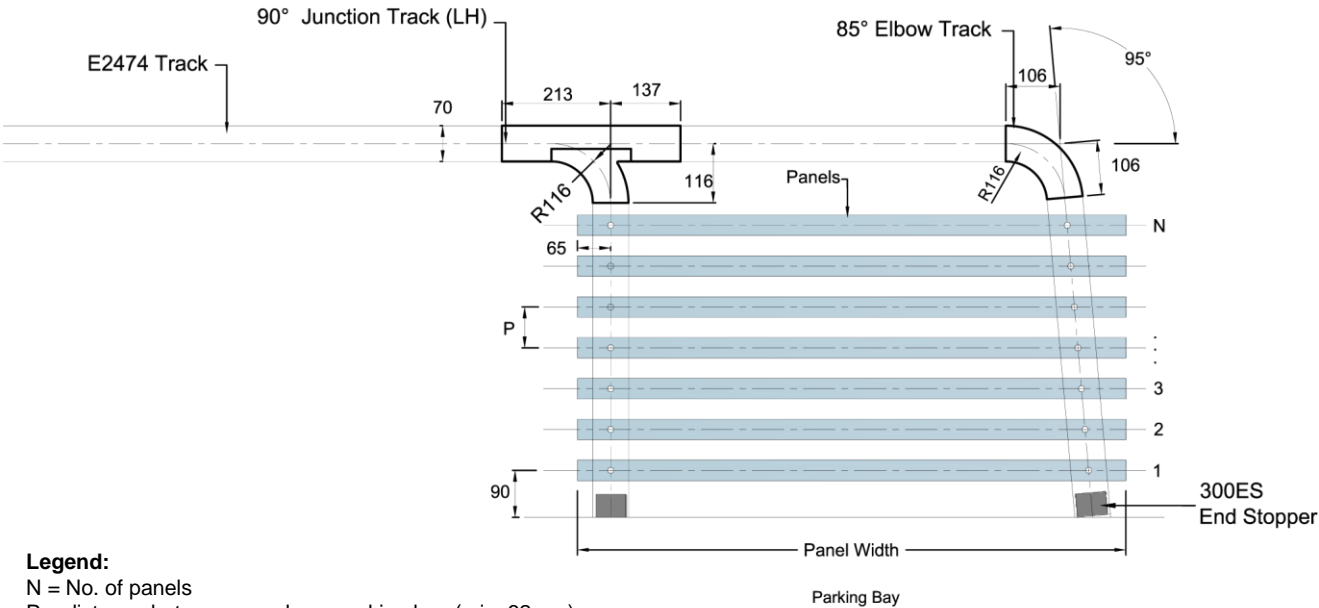


Layout 4



Plan View of Parking Bay

Layout 5

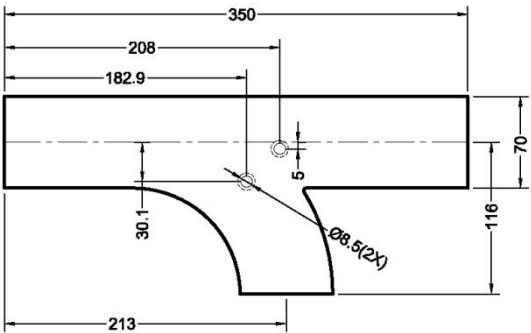
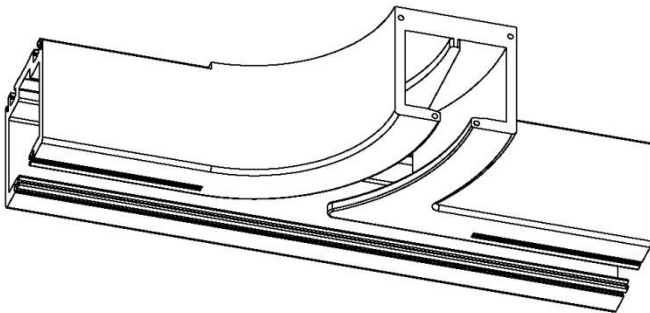


Legend:
N = No. of panels
P = distance between panels on parking bay (min: 62mm)

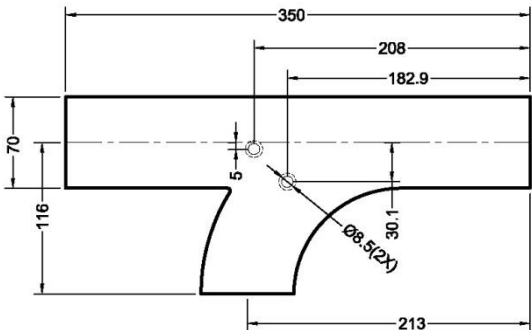
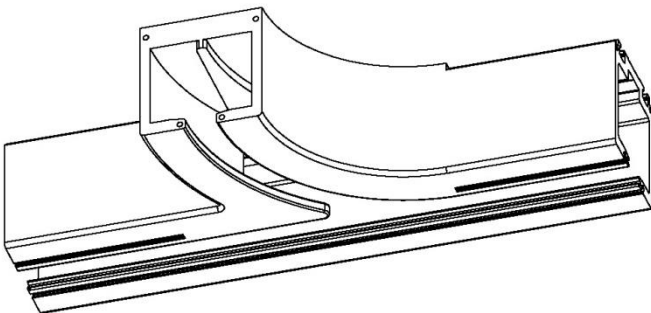
Note:
85° Elbow Track is fabricated on site from 90° Elbow Track

Aluminium Top Track

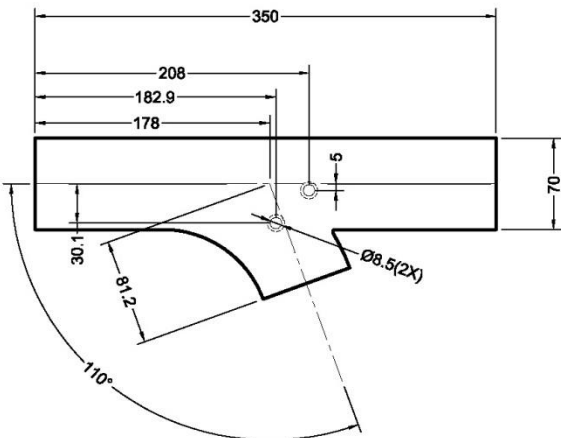
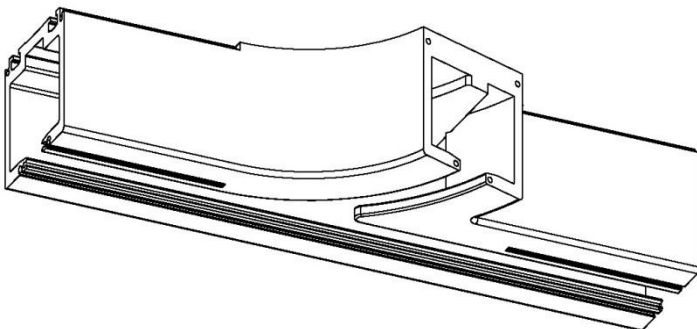
90° Left Hand Junction



90° Right Hand Junction

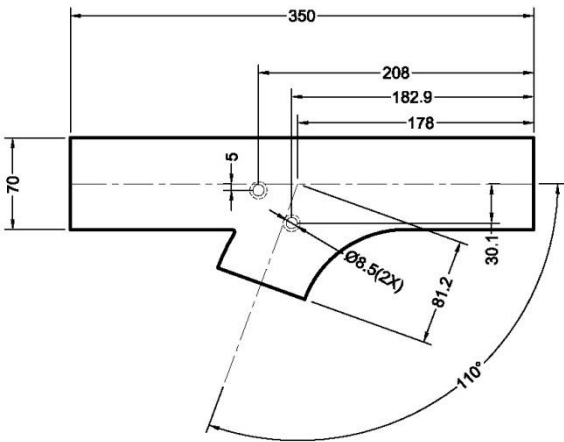
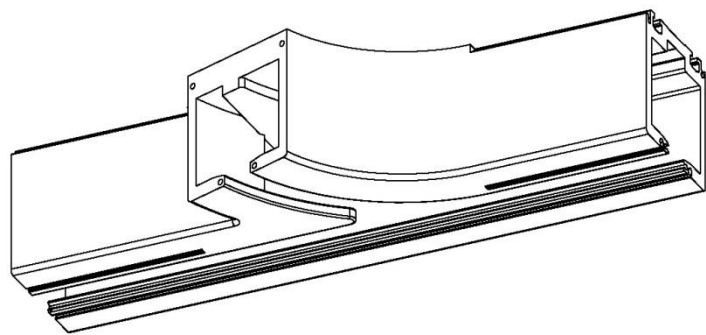


110° Left Hand Junction

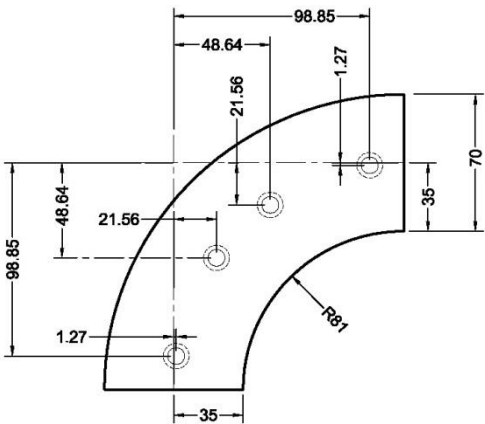
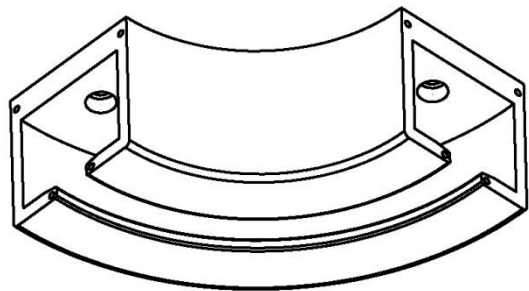


Aluminium Top Track

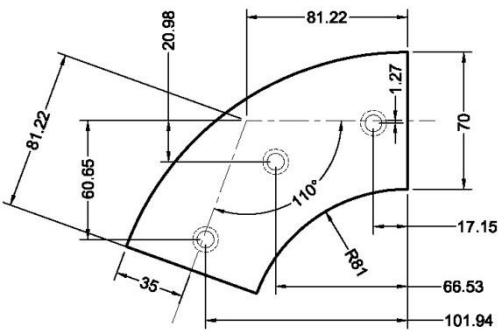
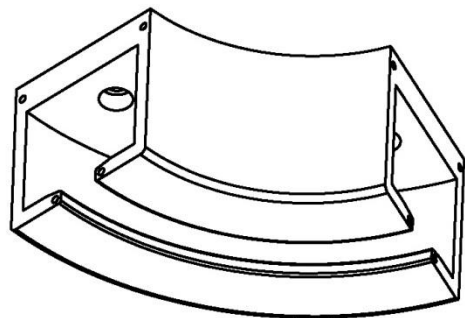
110° Right Hand Junction



90° Elbow

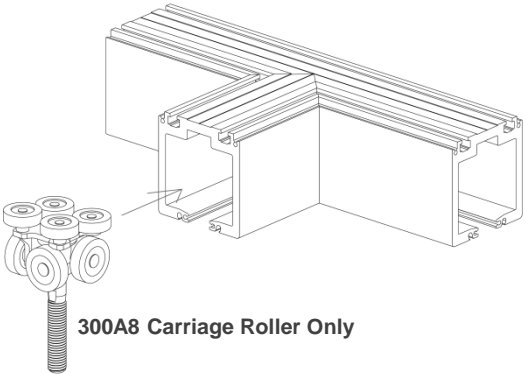
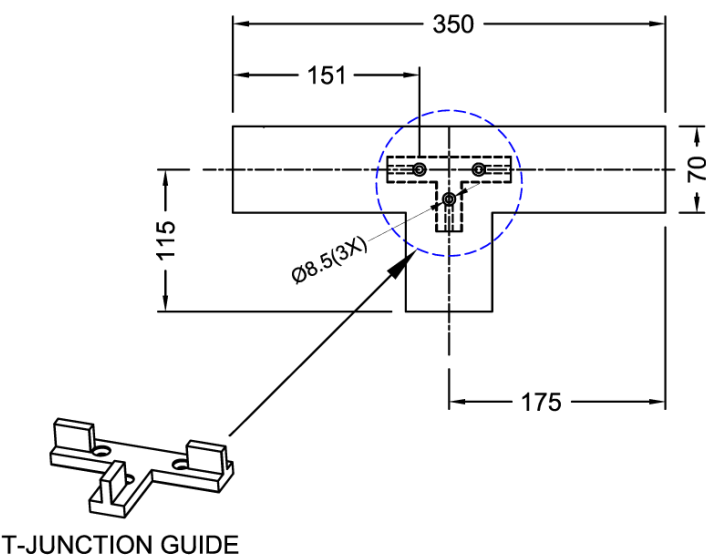


110° Elbow

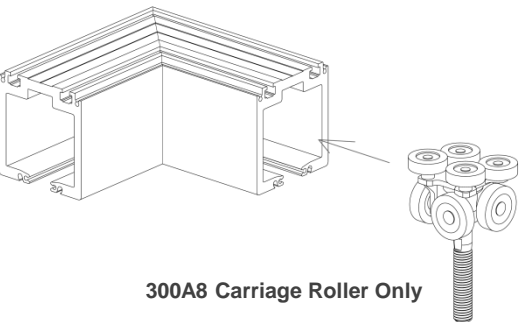
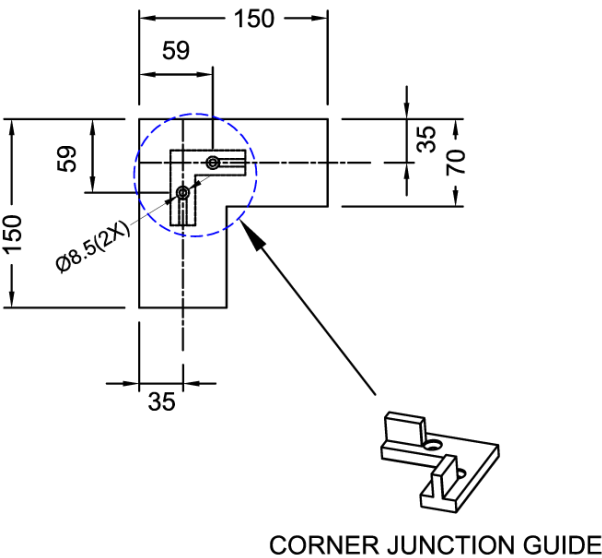


Aluminium Top Track

T-JUNCTION

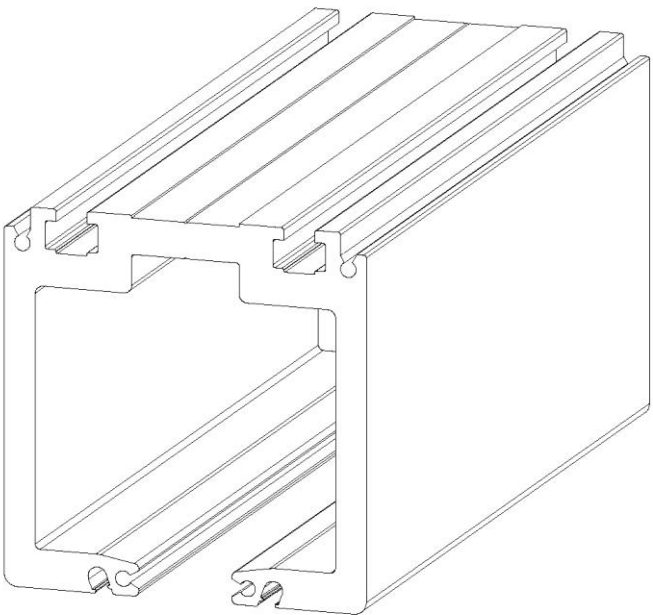
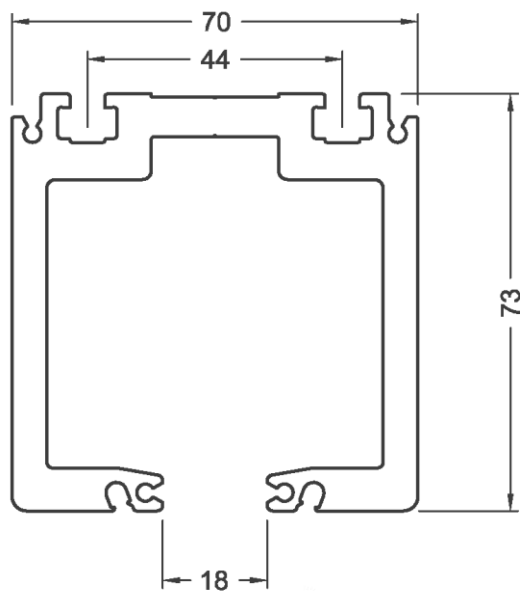


CORNER JUNCTION

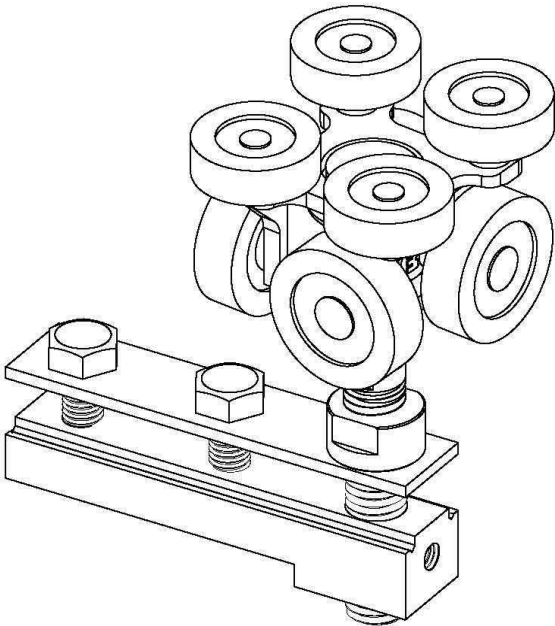


Accessories

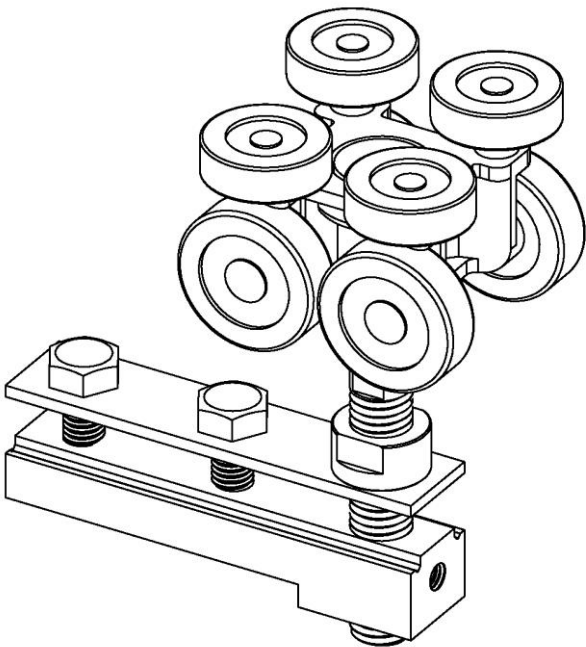
E2474 – Main Top Track



300A8 – 8pt Carriage Roller with Slider

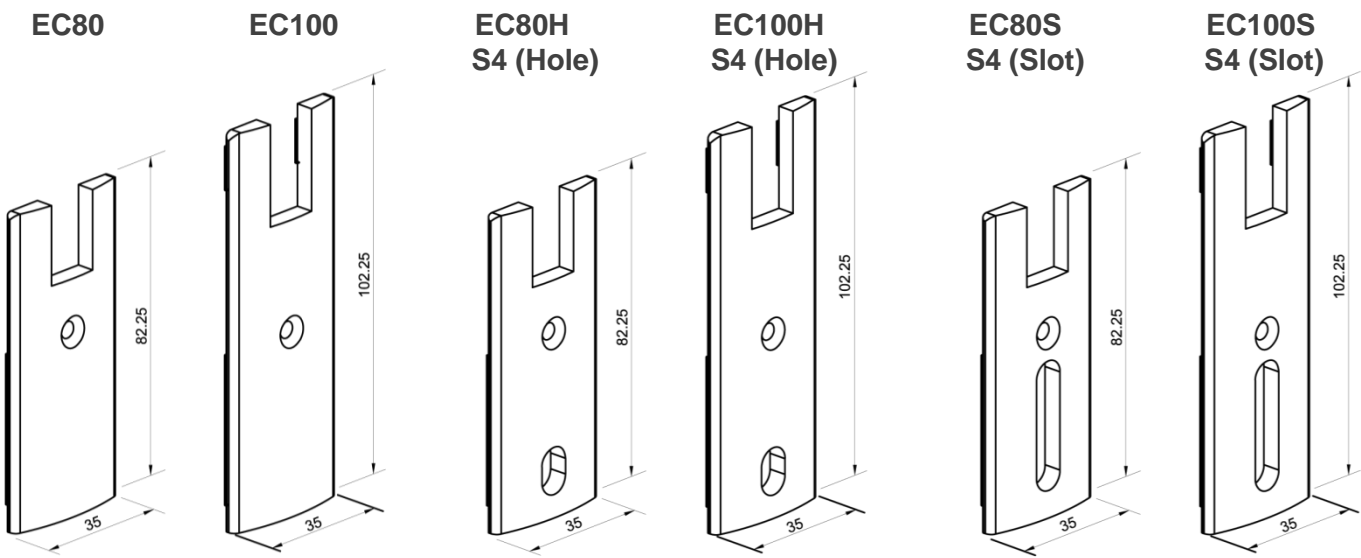


300B8 – 8pt Carriage Roller with Slider

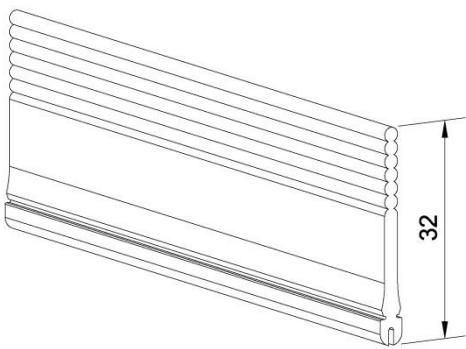


Top Accessories

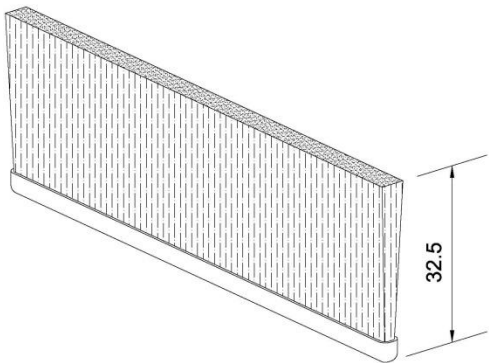
End Cap



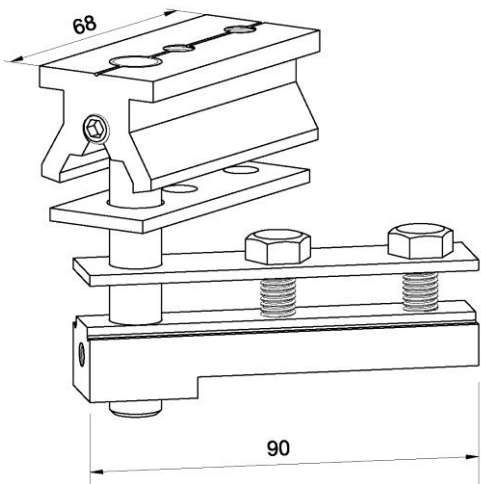
7322 – Rubber Seal



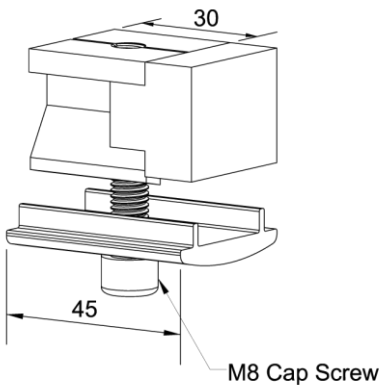
Bristle



300TP – Top Pivot with Slider

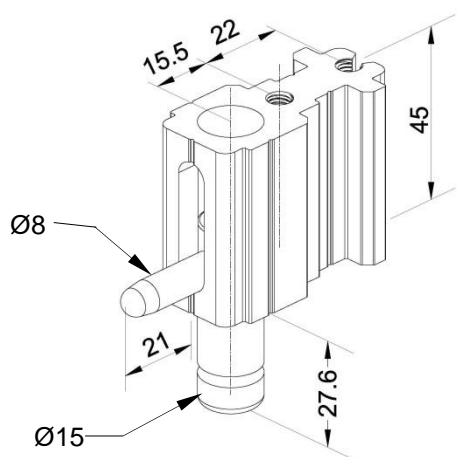


300ES – End Stopper

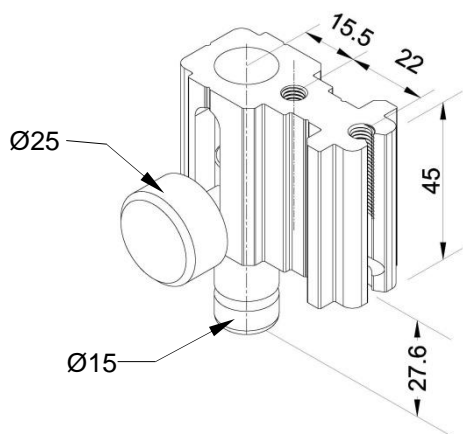


Bottom Accessories

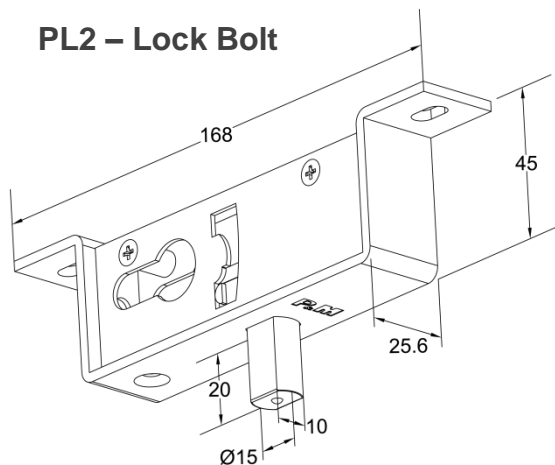
S4 – End Flush Bolt



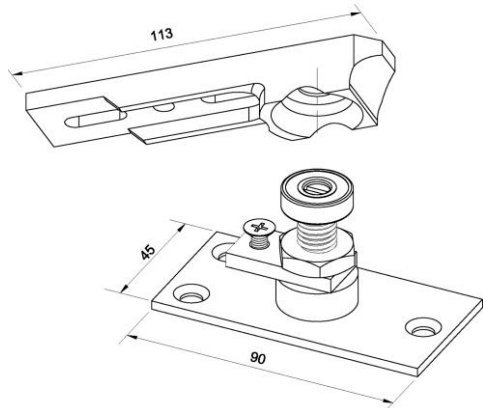
FB- Front Flush Bolt



PL2 – Lock Bolt

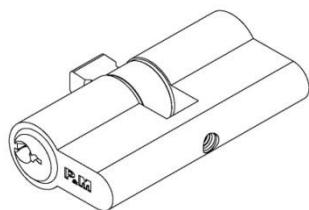


PD16 – Bottom Pivot



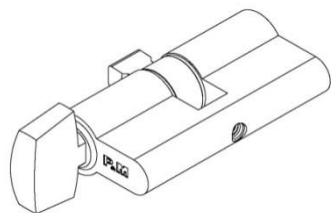
PM88 – Euro-Profile Key Cylinder

Available Length : (62mm; 42mm)

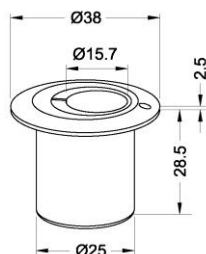


PM88T- Thumb Turn & Key Cylinder

Available Length : (62mm, 28mm Thumb Turn Only)



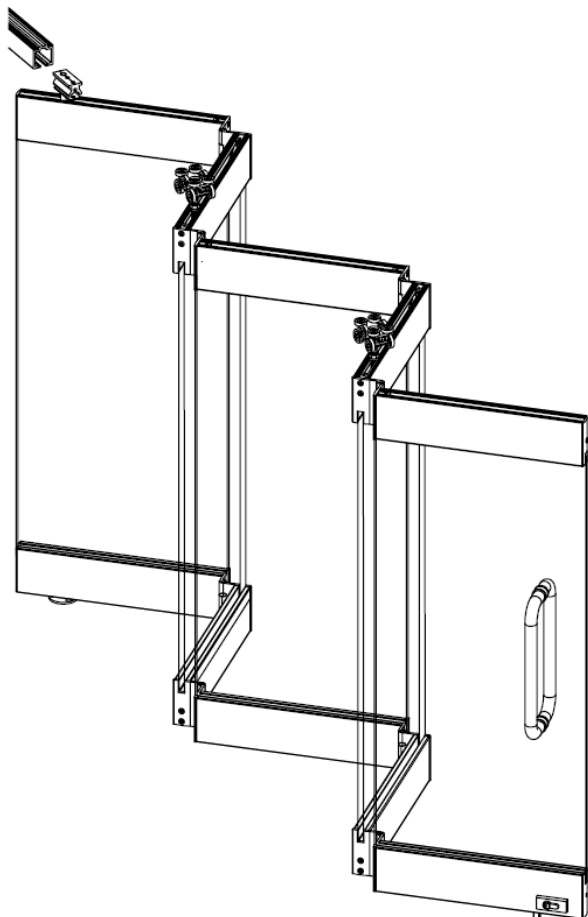
9002 – Eccentric Bolt Keeper



Also Available

SLF400

Slide and Fold Glass Panels System



Due to the company's policy of continuous product development and enhancement, the specifications and details contained in this brochure are subject to alteration without prior notice.

The dimensions, details, specifications and statements made herein or by our representatives arising out of any enquiries are given for information purposes only. They are not intended to have any legal effect and the company will not be bound thereby. The company will only accept obligations which are expressly negotiated for, and agreed and incorporated into written agreements made specifically with its respective customers.

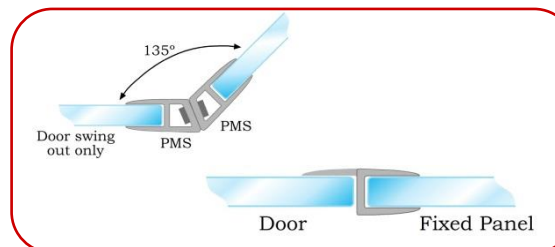
Related Products



Door Handles – Melosa Series



Door Knobs – Cerise Series



Vinyl Clip Seals – Deane Series