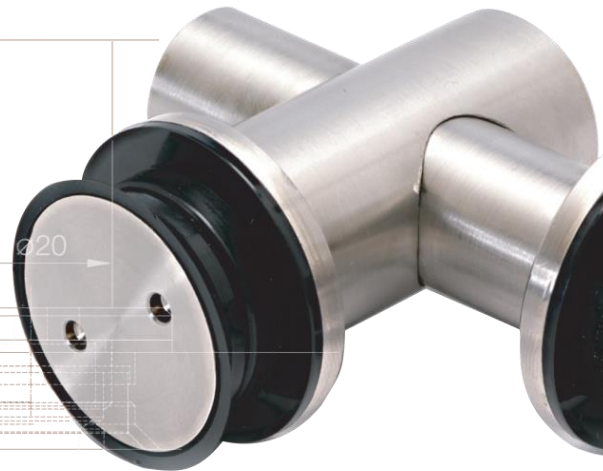
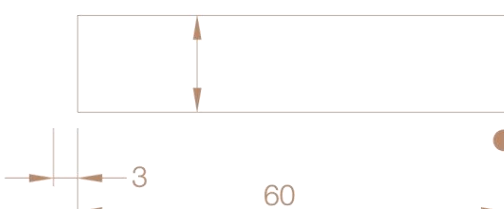
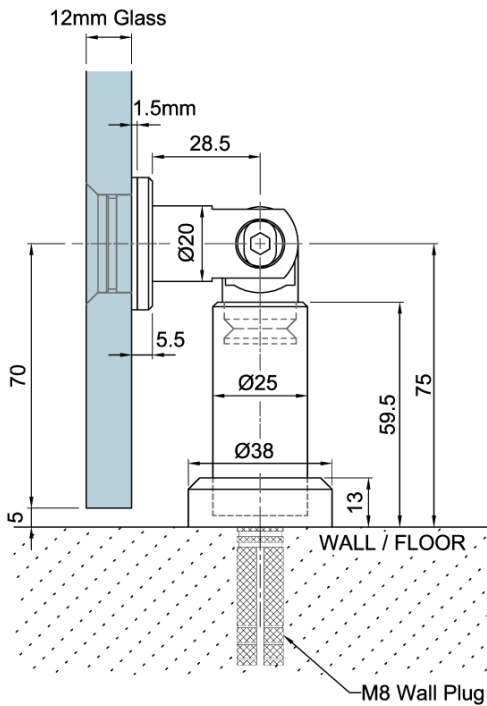


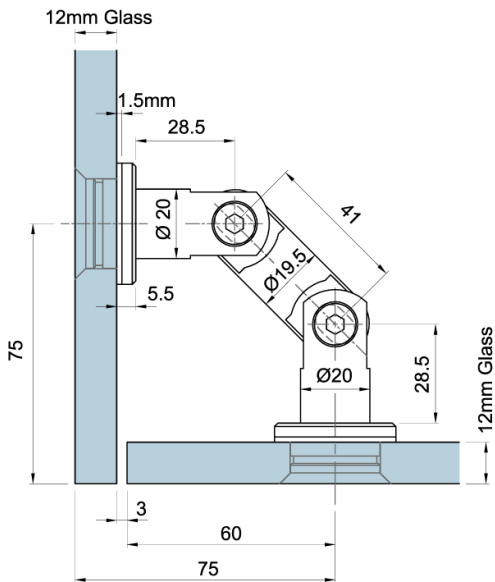
POINT FIX SYSTEM

12mm Glass

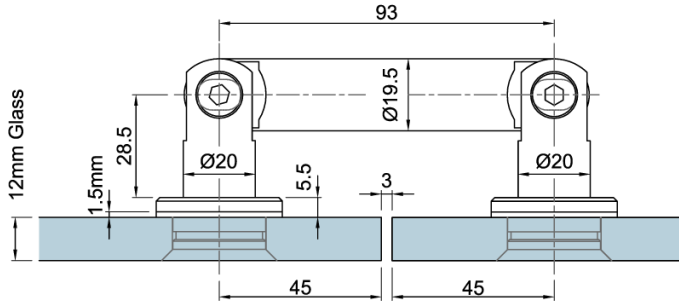




PG1
glass to wall connector
(Swivel Type)

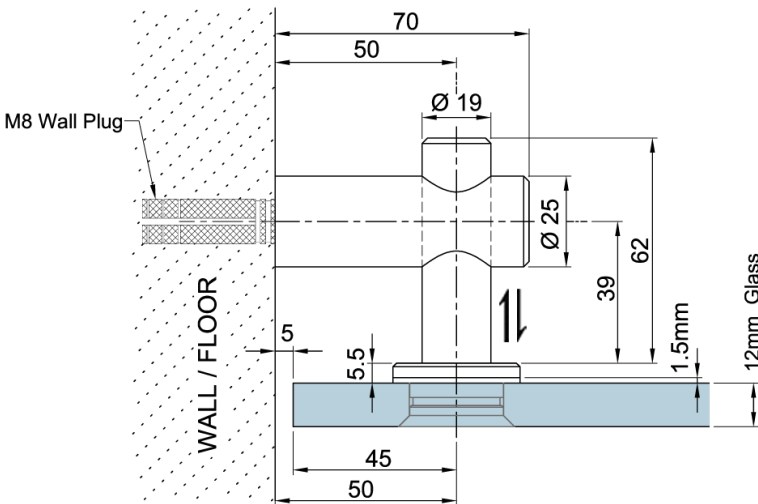


PG2(41)
90° glass to glass connector



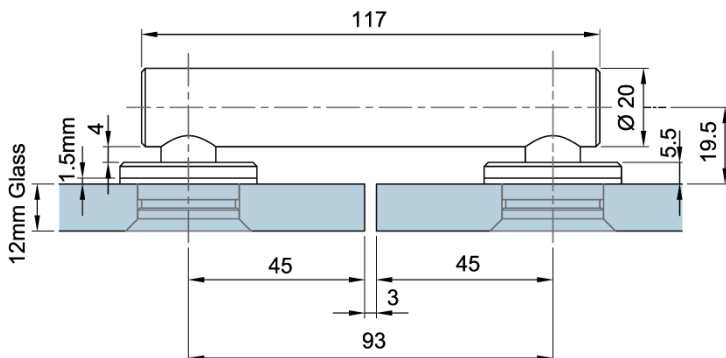
PG2 (93)

180° glass to glass connector



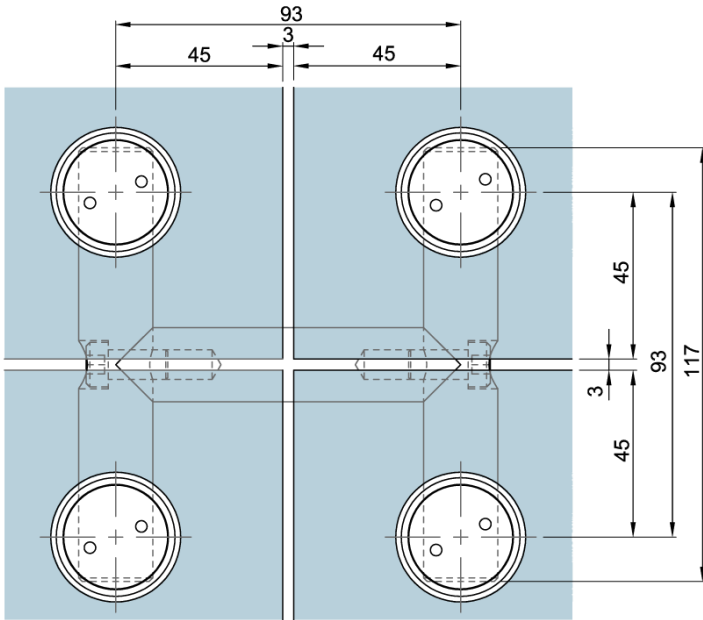
MC1

glass to wall connector

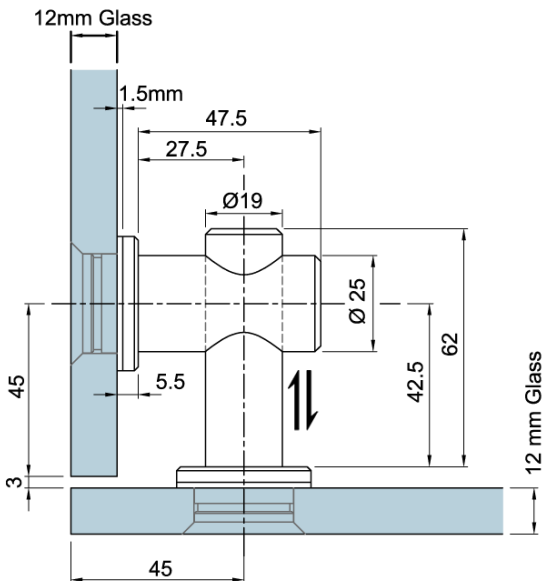
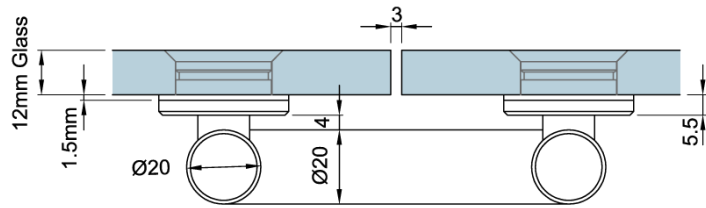


MC2

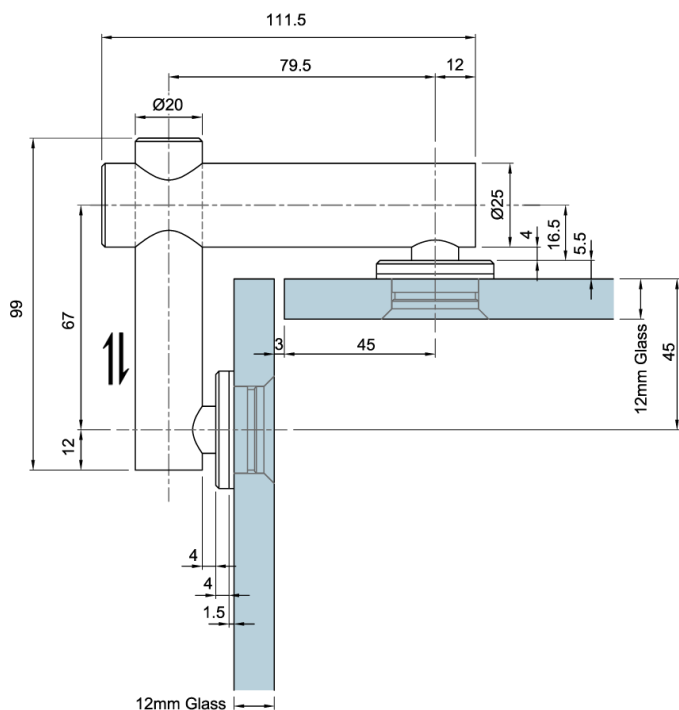
180° glass to glass connector



MC2-4
180° quad glass connector

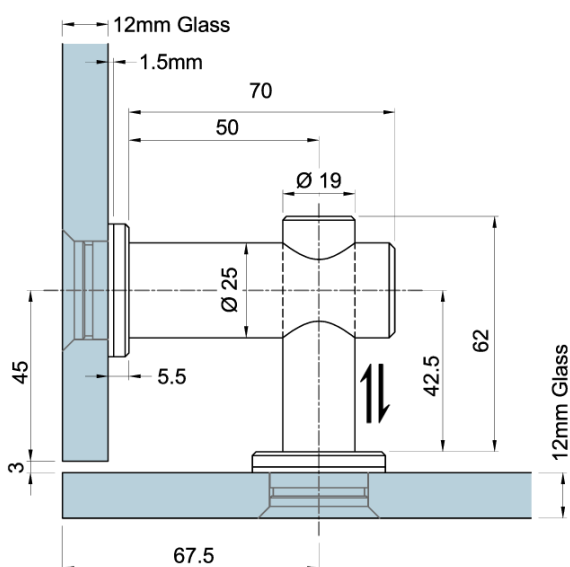


MC3
90° glass to glass connector



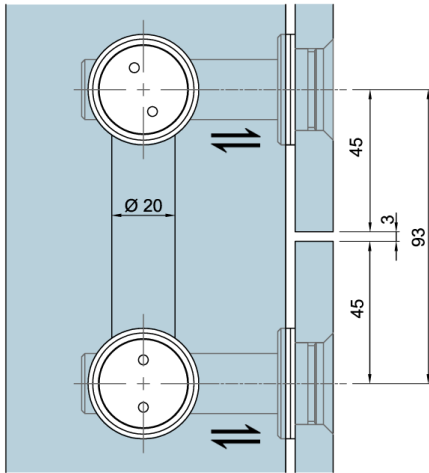
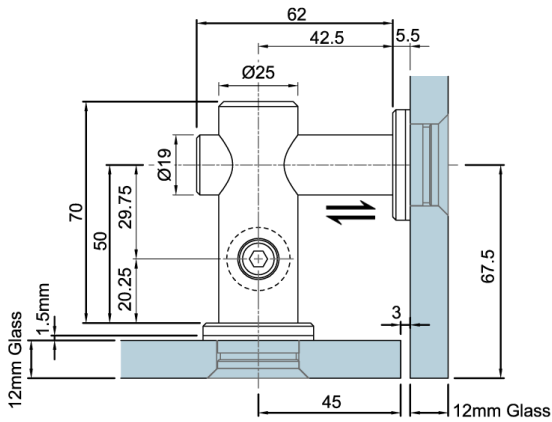
MC4

90° glass to glass connector
(External)



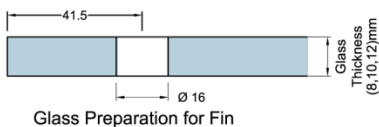
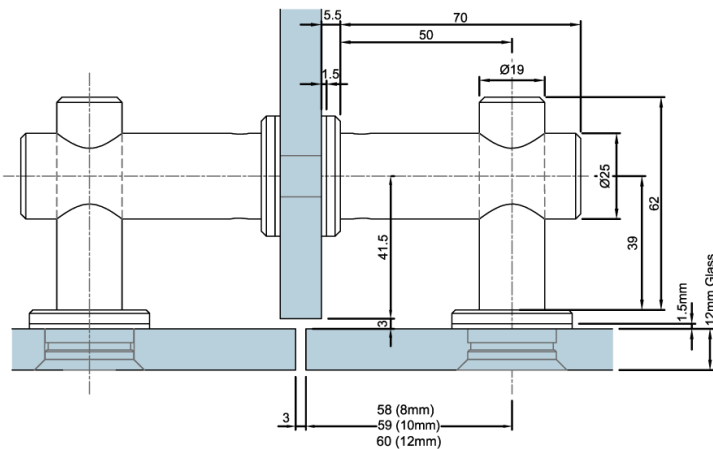
MC5

90° glass to glass connector
(Internal)



MC5-4

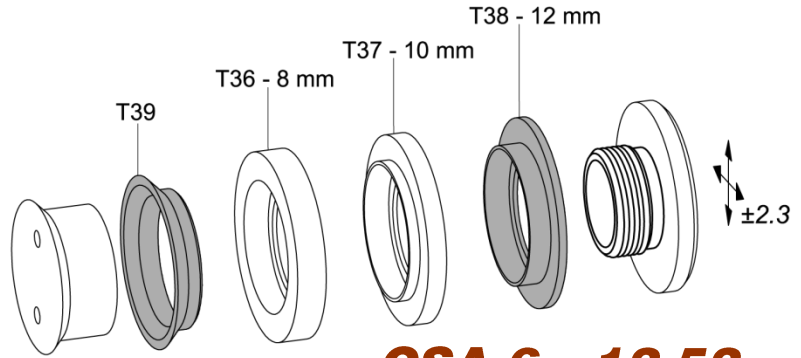
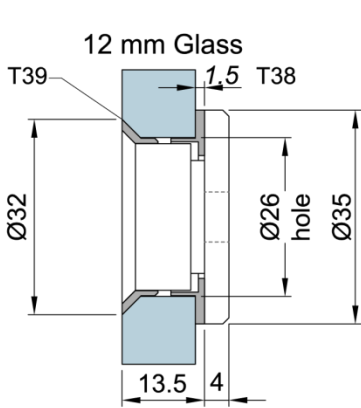
90° quad glass connector
(Internal)



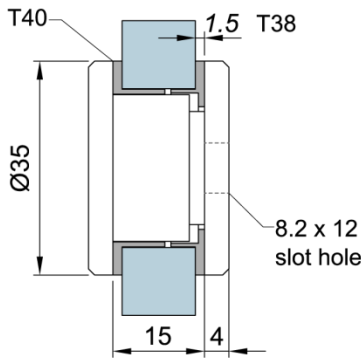
MC6

glass to fin connector

Countersunk and Flathead Adjustable Point Studs

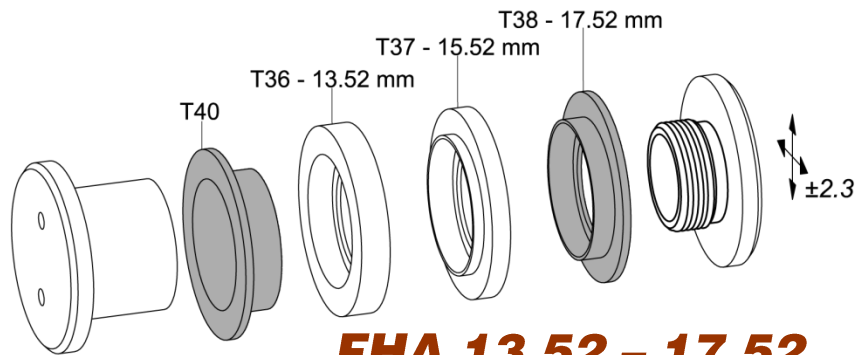
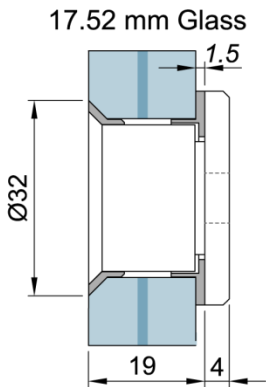


CSA 6 - 12.52

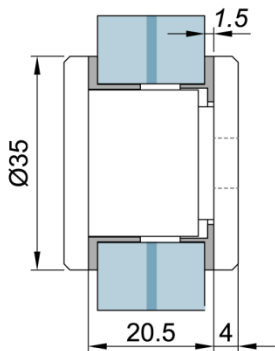


Model	h (mm)	Front gaskets	Base gaskets
CSA 6 - 12.52 FHA 6 - 12.52	6	T39	T36 + T35 x 2
	6.52	T40	T36
	8	T39	T36
	10	T39	T37
CSA 13.52 - 17.52 FHA 13.52 - 17.52	10.52	T39	T37
	12	T39	T38
	12.52	T40	T38
CSA 13.52 - 17.52 FHA 13.52 - 17.52	13.52	T39	T36
	15.52	T39	T37
	17.52	T40	T38

Gasket Types	

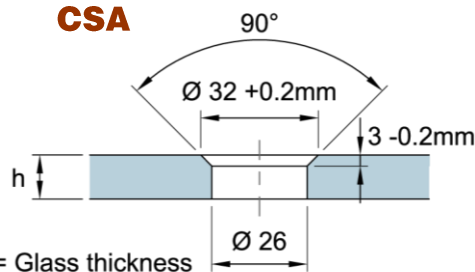


FHA 13.52 - 17.52

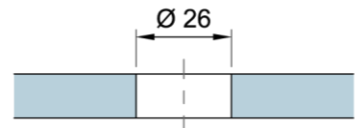


Glass Preparation

CSA



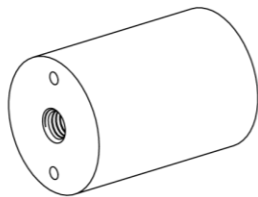
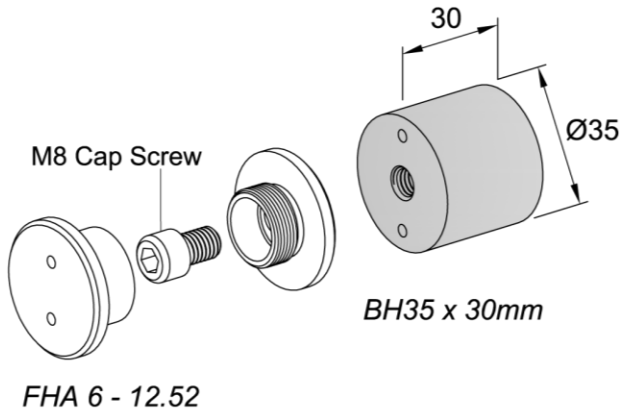
FHA



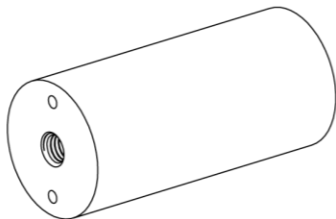
h = Glass thickness

BH35 Modular Standoff

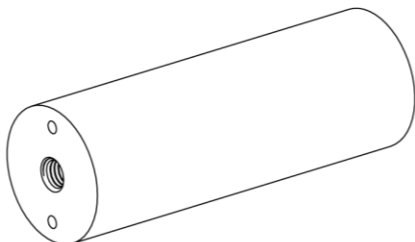
30mm, 50mm, 75mm and 100mm height to receive CSA countersunk and FHA flathead adjustable point studs



BH35 x 50mm

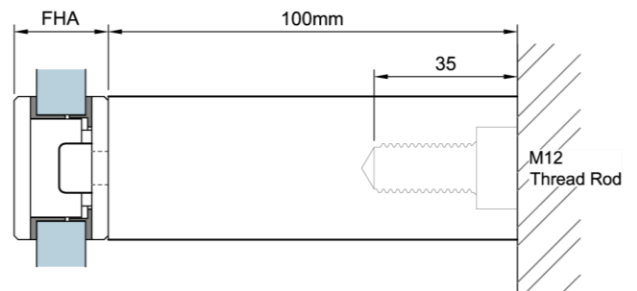
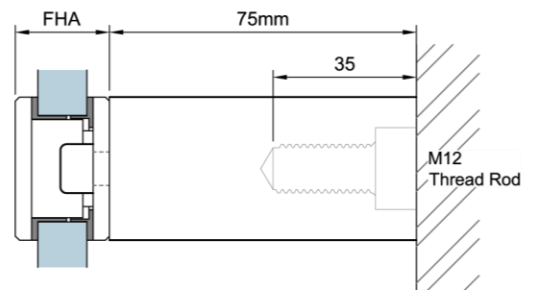
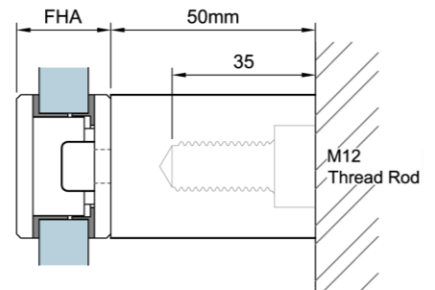
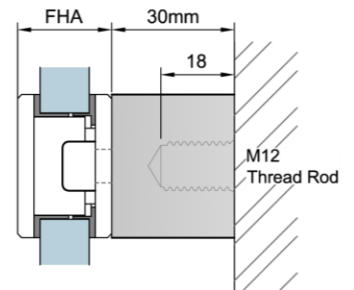
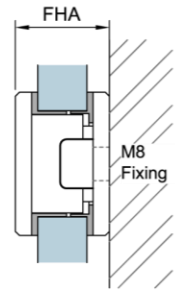


BH35 x 75mm



BH35 x 100mm

FHA Point Stud



APPLICATIONS

- This System combines the use of stainless steel components and glass panels to accentuate the design simplicity of glass panels facades.
- With its common interchangeable components and choice of flush-fitting or flathead fitting, results in ease of installation and assembly.
- Adjustable fittings results in ease of installation for out of "hole to hole centres.

Finishes

- Satin Stainless Steel

Due to the company's policy of continuous product development and enhancement, the specifications and details contained in this brochure are subject to alteration without prior notice.

The dimensions, details, specifications and statements made herein or by our representatives arising out of any enquiries are given for information purposes only. They are not intended to have any legal effect and the company will not be bound thereby. The company will only accept obligations which are expressly negotiated for, and agreed and incorporated into written agreements made specifically with its respective customers.

RELATED PRODUCTS



Pivot Door System – Magtec Series



Sliding Door System – Magtec Series