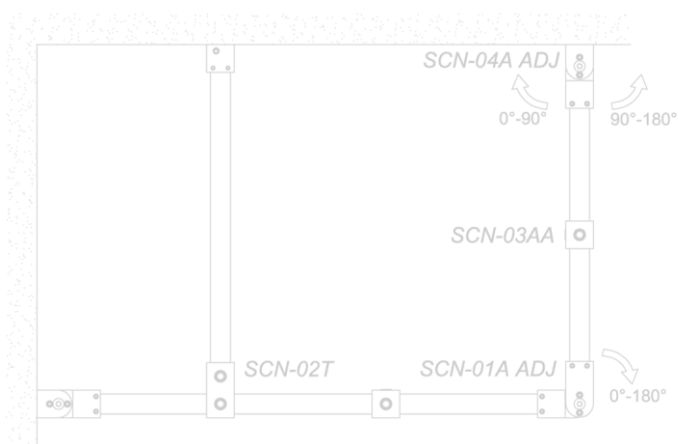
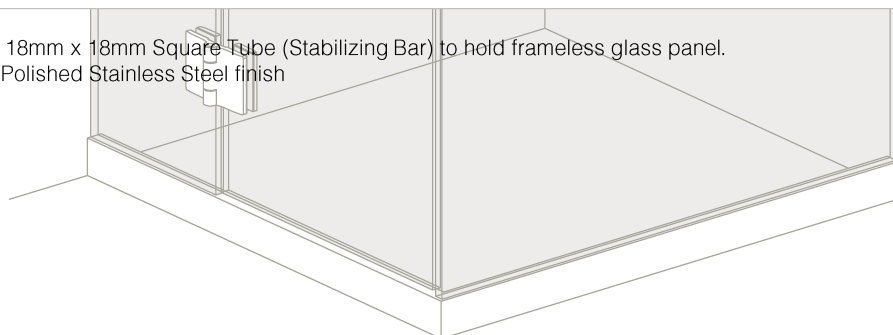
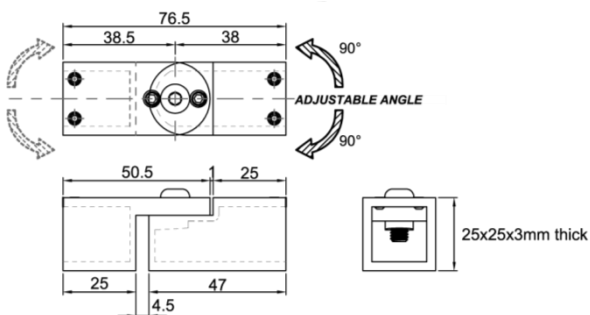


- Suitable for connecting 18mm x 18mm Square Tube (Stabilizing Bar) to hold frameless glass panel.
- Satin Stainless Steel or Polished Stainless Steel finish



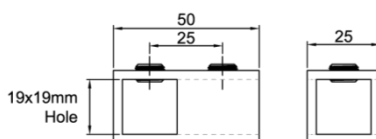
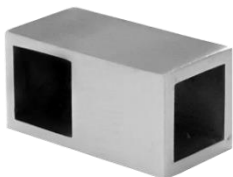
SCN-01A ADJ

Adjustable Angular Connector



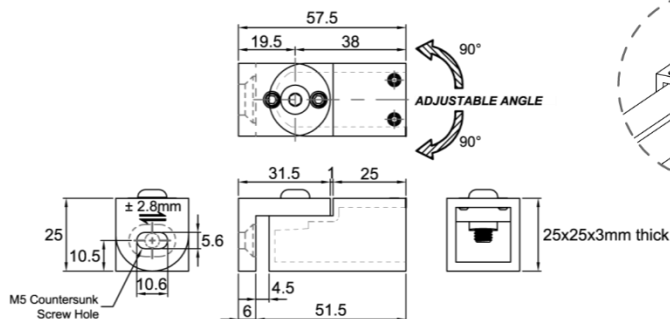
SCN-02T

T-Junction Connector



SCN-04A ADJ

Adjustable Wall Connector

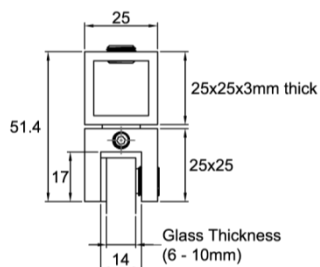


SCN-03AA

Intermediate Connector

SCN-03BA

End Connector

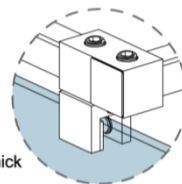
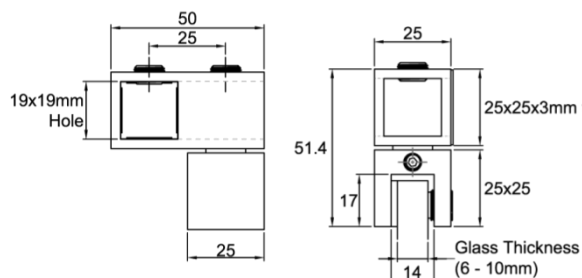


SCN-03BA

SCN-03AA

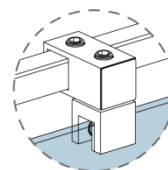
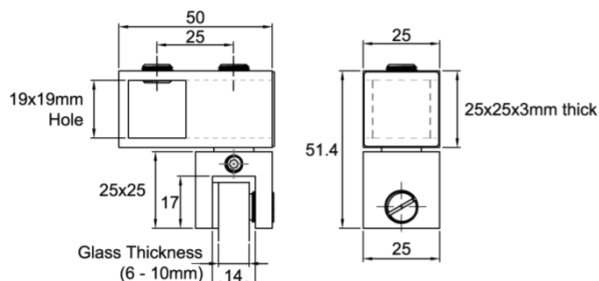
SCN-02L

90° Connector



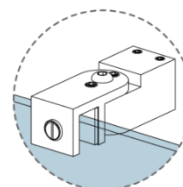
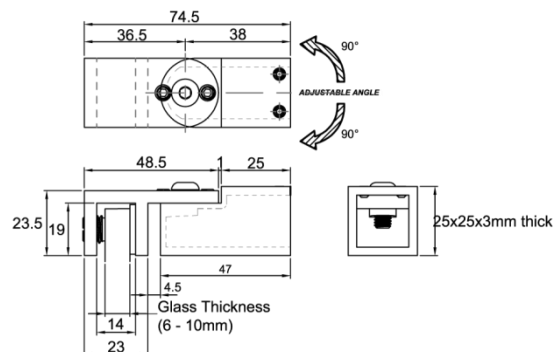
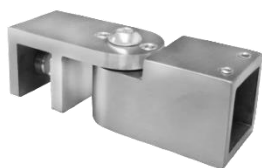
SCN-02P

Parallel Connector



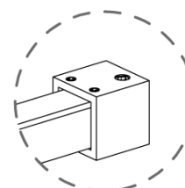
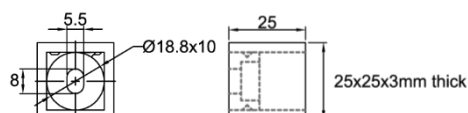
SCN-03E ADJ

Adjustable End Connector



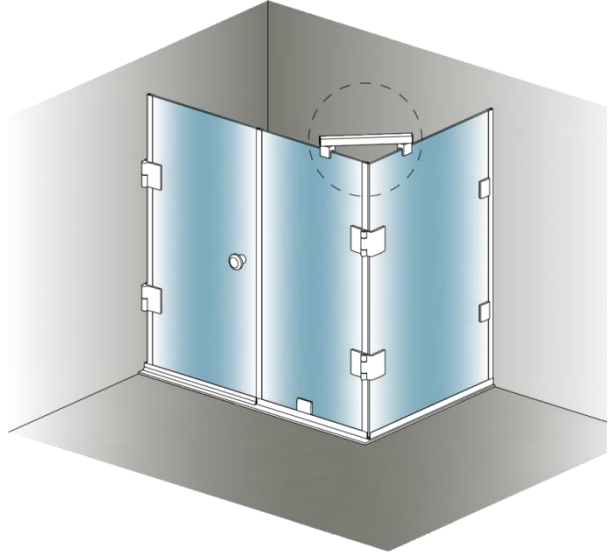
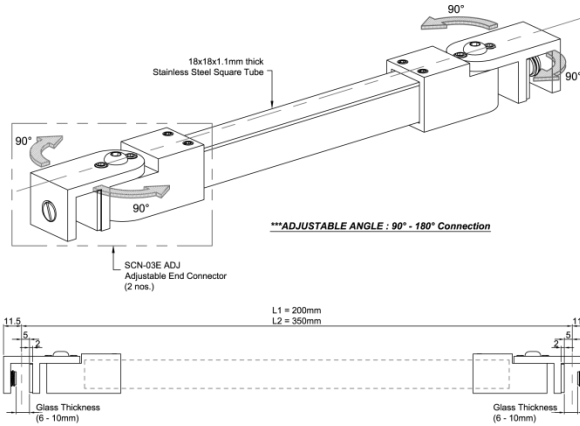
SCN-04

Fixed Wall Connector



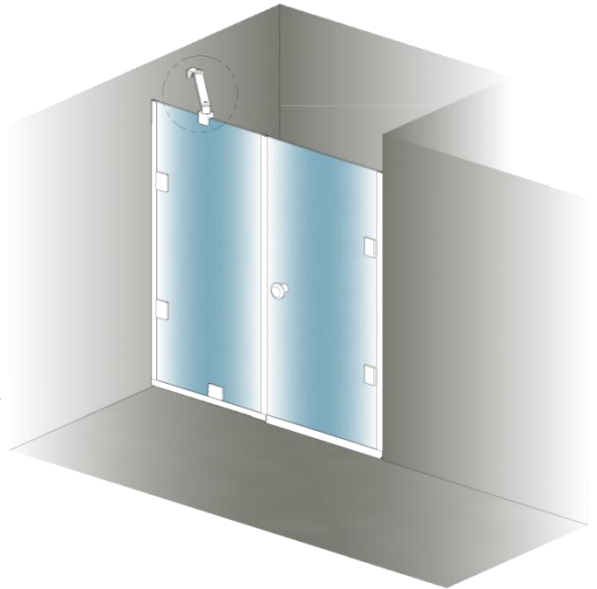
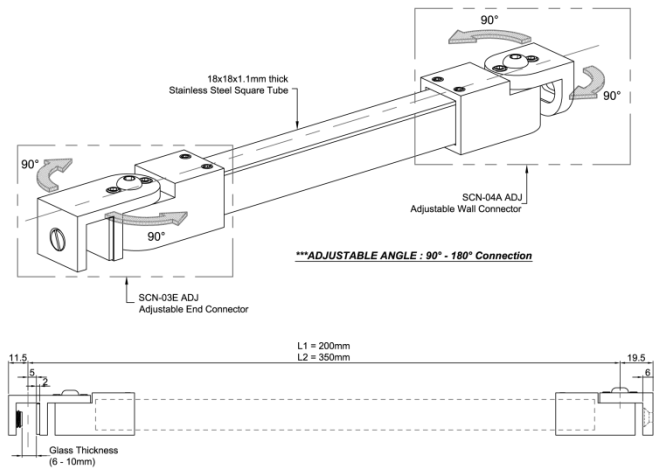
SCN GTG

Glass to Glass Connector



SCN GTW

Glass to Wall Connector



Due to the company's policy of continuous product development and enhancement, the specifications and details contained in this brochure are subject to alteration without prior notice.

The dimensions, details, specifications and statements made herein or by our representatives arising out of any enquiries are given for information purposes only. They are not intended to have any legal effect and the company will not be bound thereby. The company will only accept obligations which are expressly negotiated for, and agreed and incorporated into written agreements made specifically with its respective customers.

1 Preference

Preference Pte Ltd

No.2 Kallang Pudding Road #01-02 Mactech Building Singapore 349307

Tel: +65 6746 5185 Fax: +65 6746 8749 Email: enquiry@preference.com.sg Website: www.preference.com.sg