



P&M[®] AJ51

Slim-line Sliding Door System

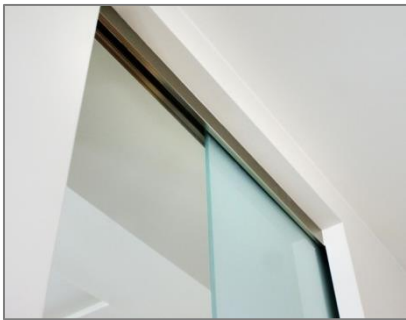
i1 Preference
The Preferred Name in Entrance Systems

P&M AJ51 Slim-line Sliding Door System is aesthetic, sturdy and versatile in both construction and design.

The sightline is only 51mm comprising of a single piece extruded aluminium track with a clip-on cover and end cap at both ends. Both the track and cover are available in brushed satin, polished anodised and natural anodised finishes. Three independent rollers attached to the clamp, facilitate a smooth rolling motion and prevent the clamp assembly from jumping off the track. Soft closing feature is optional.

The system can be wall mounted, ceiling mounted and mounted to side and over glass panels. Efficient clamping and roller system allows AJ51 to carry a maximum weight of 120 kg per glass panel and maximum glass thickness of 13.52mm.

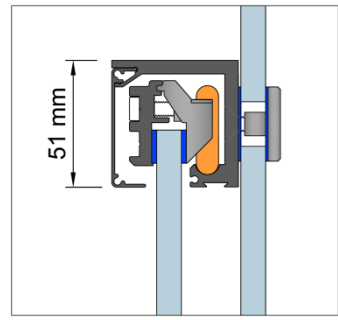
AJ51 is efficient and economical. There is no need for any glass clamping notch preparation. Coupled with its slim sightline, AJ51 is a choice for every designers and installers.



Ceiling Mounted



Wall Mounted



Thru-hole Glass Fixing

WALL MOUNTED



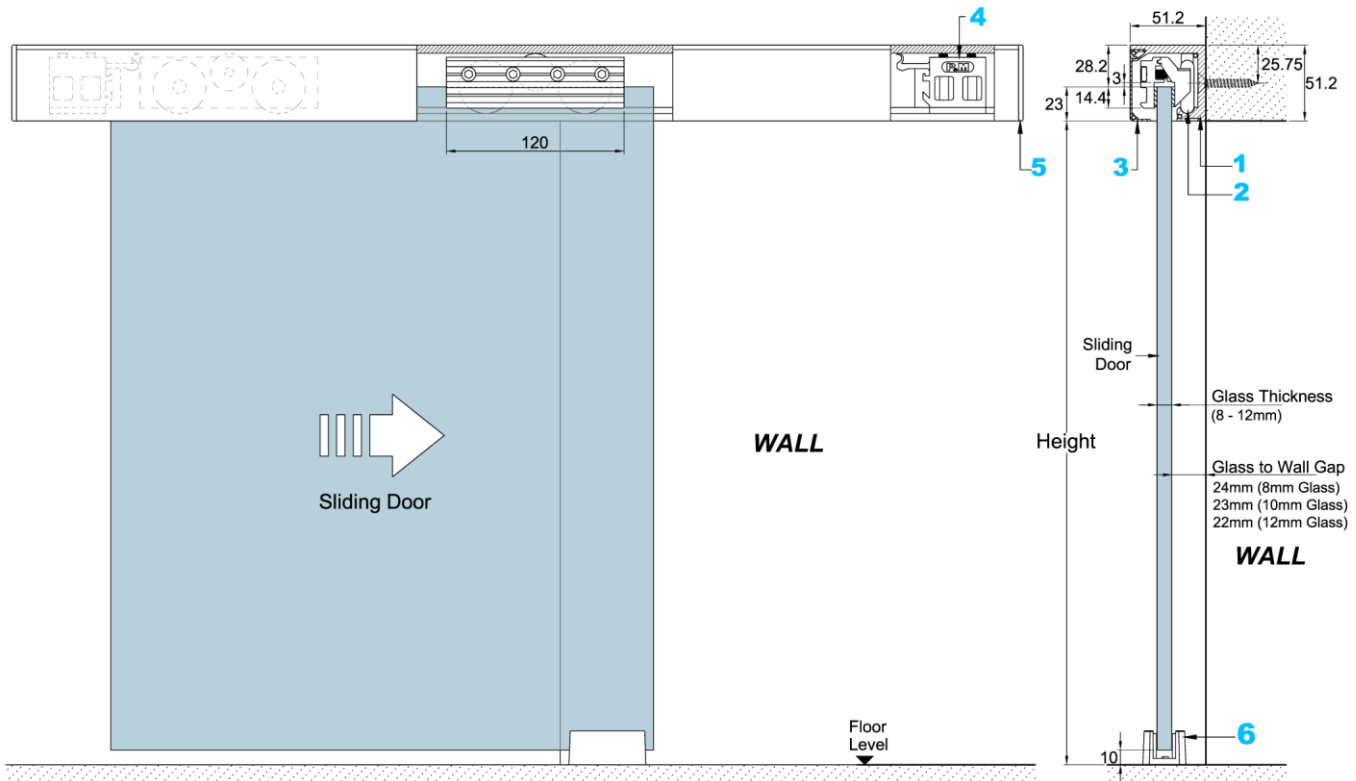
AJ51 Wall Mounted Sliding Door System

is available with the following standard components as a complete system:

- ❶ AJ51(TR) – Aluminium top track
- ❷ AJ51(CR3) – Three wheels carriage rollers glass clamp
- ❸ AJ51(FC) – Clip-on aluminium cover
- ❹ AJ51(ES) – End stopper with catch device (LH&RH)
- ❺ AJ51(EC) – End cap (LH&RH)
- ❻ UG-ALT4 – Single-U stainless steel floor guide

Upon order, please specify the following:

- Glass Thickness (8 / 10 / 12 / 13.52mm)



CEILING MOUNT

with Fixed Glass Panel Below Track



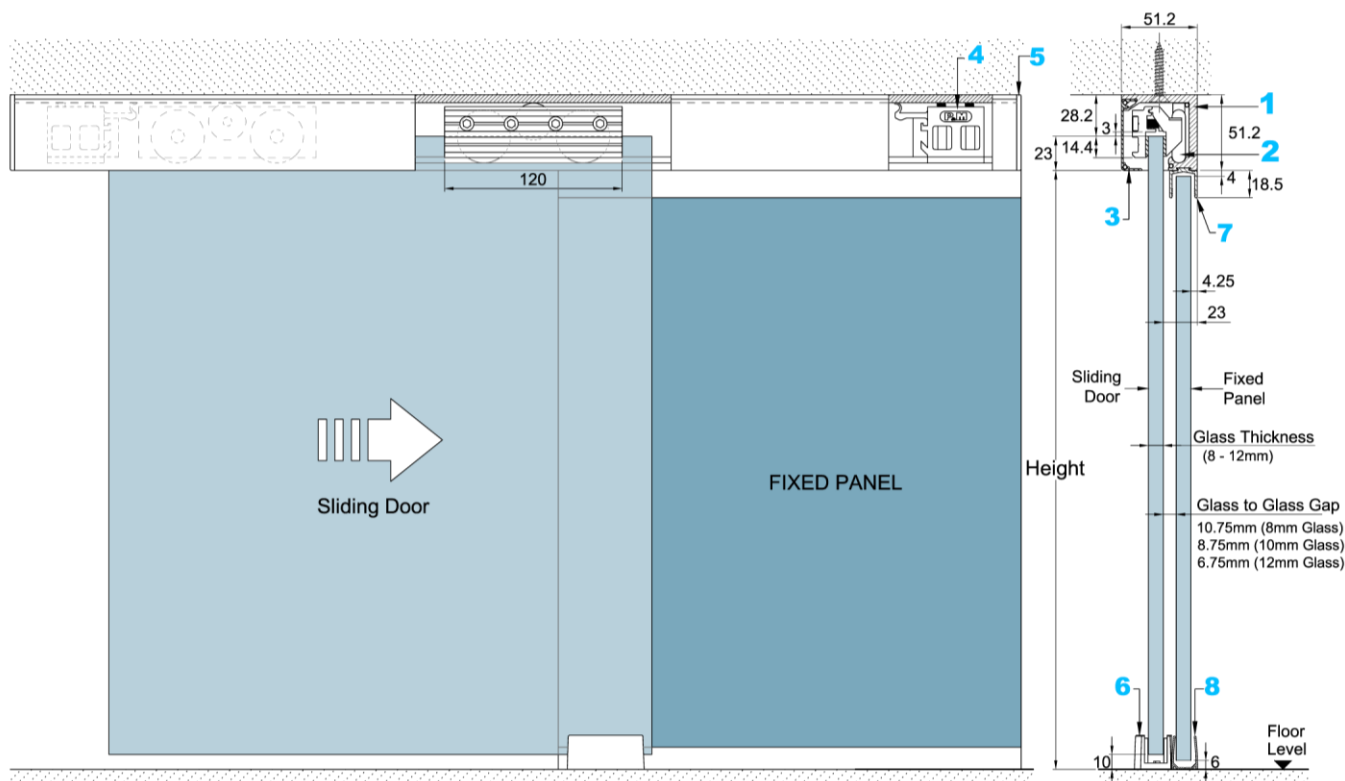
AJ51 Ceiling Mounted Sliding Door System

is available with the following standard components as a complete system:

- ❶ AJ51(TR) – Aluminium top track
- ❷ AJ51(CR3) – Three wheels carriage rollers glass clamp
- ❸ AJ51(FC) – Clip-on aluminium cover
- ❹ AJ51(ES) – End stopper with catch device (LH&RH)
- ❺ AJ51(EC) – End cap (LH&RH)
- ❻ UG-ALT4 – Single-U stainless steel floor guide

For Fixed Panel Mounted Below Track

- ❼ AJ51(SU) – Dovetailed U-channel
- ❽ UC-175225 – Bottom U-channel



**Glass Height = Height + (23 - 10)

CEILING MOUNT

with Fixed Glass Panel Behind Track



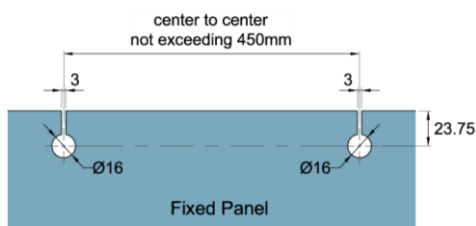
AJ51 Ceiling Mounted Sliding Door System

is available with the following standard components as a complete system:

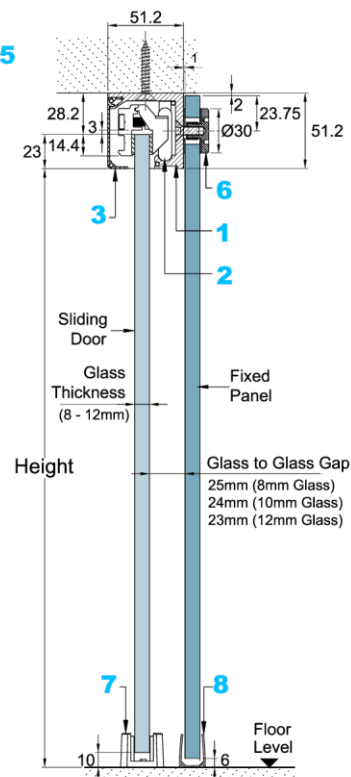
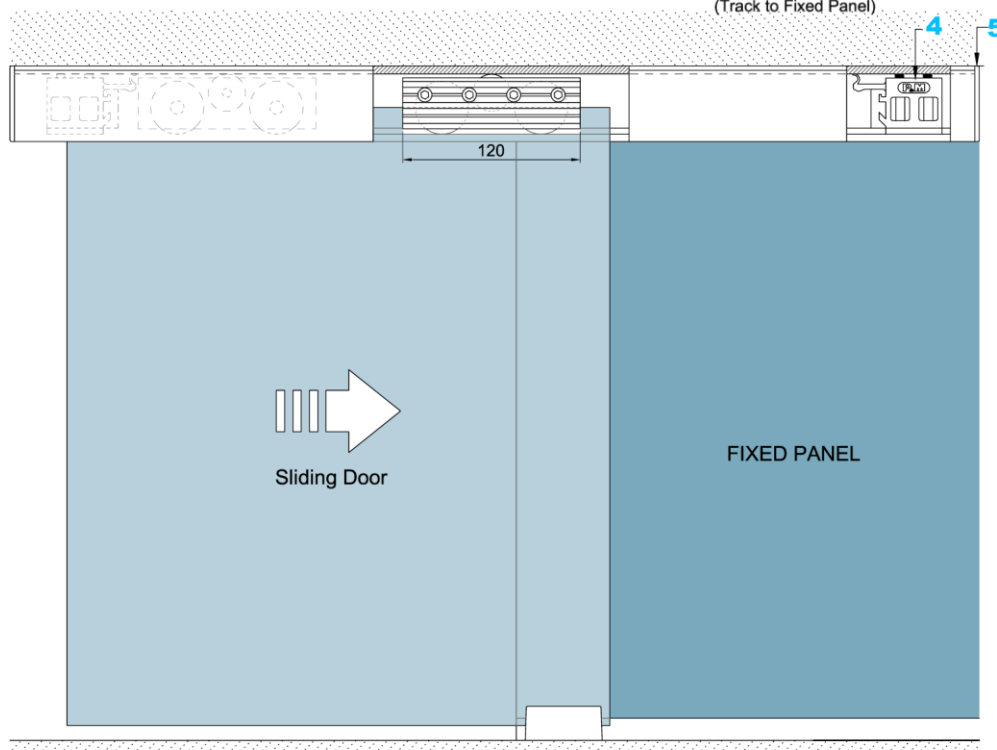
- ❶ AJ51(TR) – Aluminium top track
- ❷ AJ51(CR3) – Three wheels carriage rollers glass clamp
- ❸ AJ51(FC) – Clip-on aluminium cover
- ❹ AJ51(ES) – End stopper with catch device (LH&RH)
- ❺ AJ51(EC) – End cap (LH&RH)
- ❻ AJ51-TTG30 – Track to glass connector
- ❼ UG-ALT4 – Single-U stainless steel floor guide

For Fixed Panel Behind Track

- ❽ UC-175225 – Bottom U-Channel

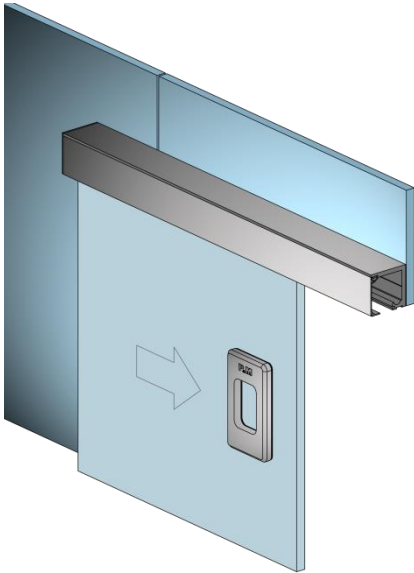


Glass Preparation for Fixed Panel
(Track to Fixed Panel)



**Glass Height = Height + (23 - 10)

OVERPANEL AND FIXED PANEL MOUNTED



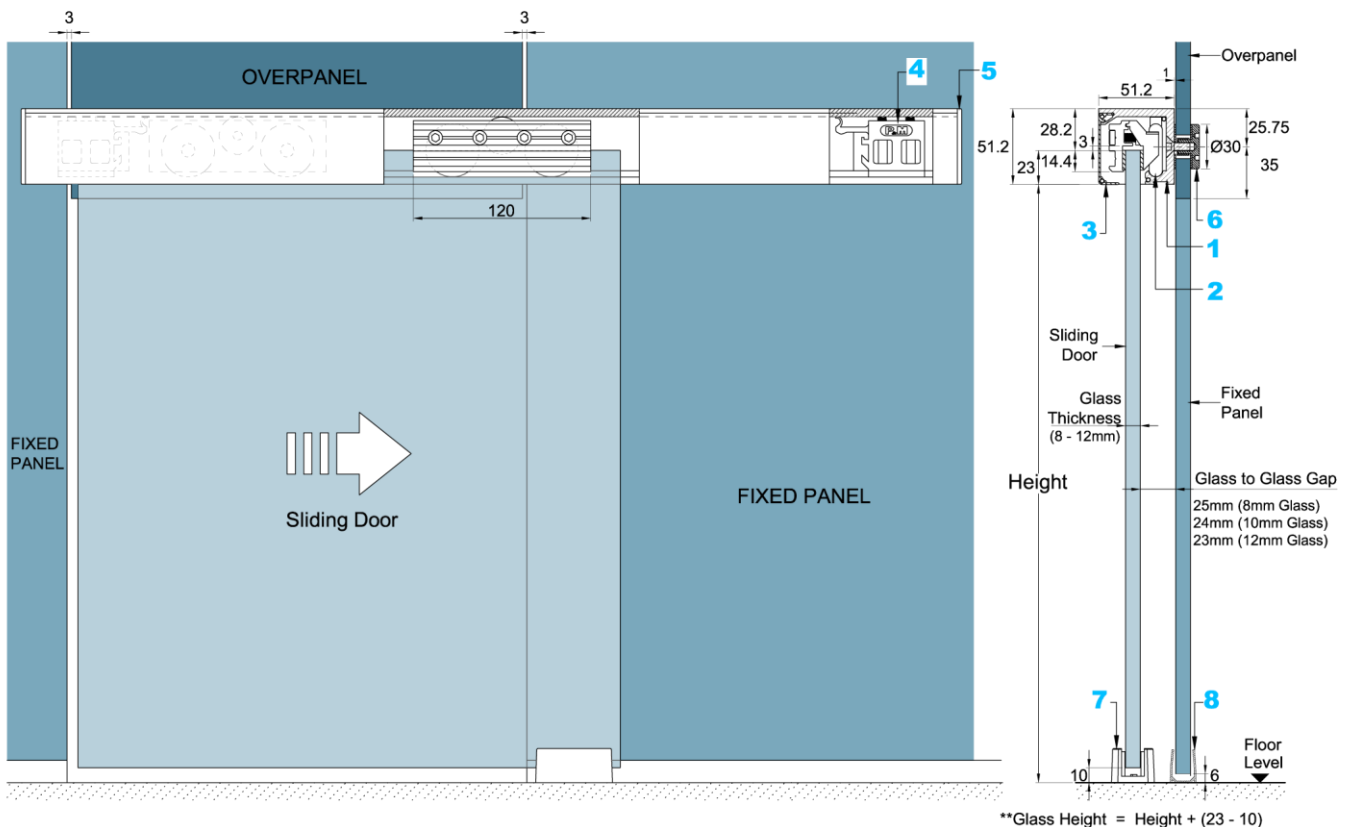
AJ51 Overpanel & Fixed Panel Mounted Sliding Door System

is available with the following standard components as a complete system:

- ① AJ51(TR) – Aluminium top track
- ② AJ51(CR3) – Three wheels carriage rollers glass clamp
- ③ AJ51(FC) – Clip-on aluminium cover
- ④ AJ51(ES) – End stopper with catch device (LH&RH)
- ⑤ AJ51(EC) – End cap (LH&RH)
- ⑥ AJ51-TTG30 – Track to glass connector
- ⑦ UG-ALT4 – Single-U stainless steel floor guide

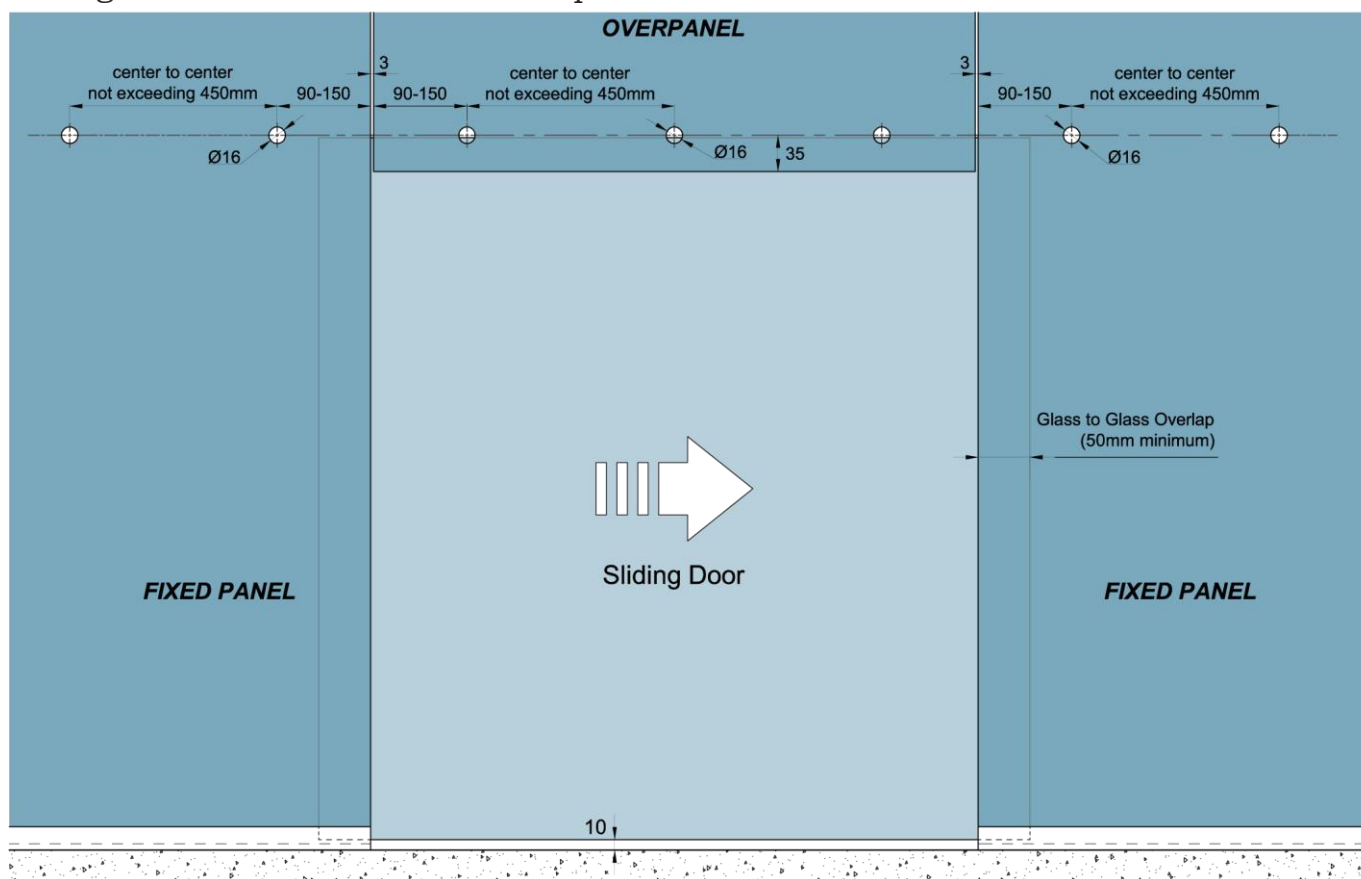
For Fixed Panel

- ⑧ UC-175225 – Bottom U-Channel

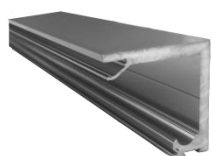


Typical Glass Elevation

Single Leaf Door Mounted to Overpanel and Fixed Panel



COMPONENTS



AJ51(TR)
Aluminium top track



AJ51(CR3)
Three wheels carriage rollers
glass clamp



AJ51(ES)
End Stopper
with catch device



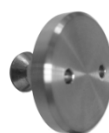
UG-ALT4
Single-U stainless steel
floor guide



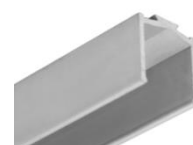
AJ51 (FC)
Clip-on cover



AJ51 (EC)
End cap



AJ51-TTG30
Track to Glass Fixing



AJ51(SU)
Dovetailed U-Channel

Door Specification

Maximum Door Width : 1000mmW
Maximum Door Height : 3000mmH
Maximum Door Weight : 120kg
Glass Thickness: 8 – 13.52mm

Due to the company's policy of continuous product development and enhancement, the specifications and details contained in this brochure are subject to alteration without prior notice.

The dimensions, details, specifications and statements made herein or by our representatives arising out of any enquiries are given for information purposes only. They are not intended to have any legal effect and the company will not be bound thereby. The company will only accept obligations which are expressly negotiated for, and agreed and incorporated into written agreements made specifically with its respective customers.

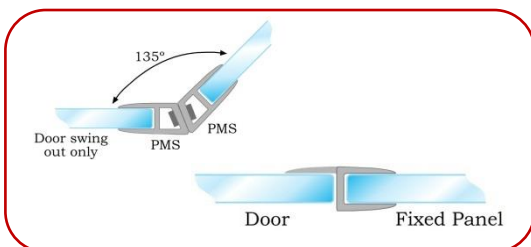
Related Products



Door Handles – Melosa Series



Door Knobs – Cerise Series



Vinyl Clip Seals – Deane Series