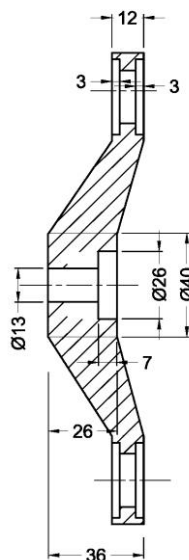
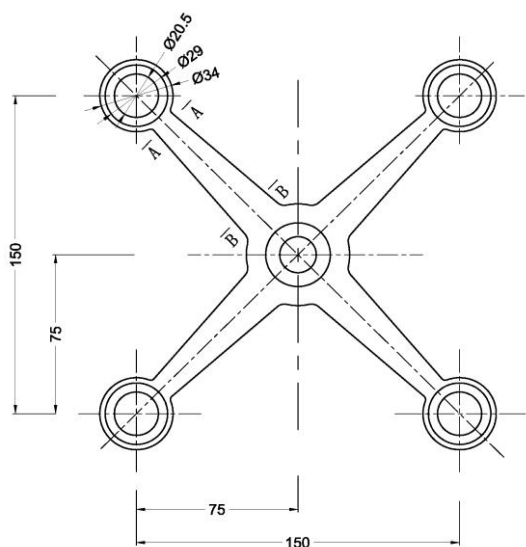




# Spider Fittings

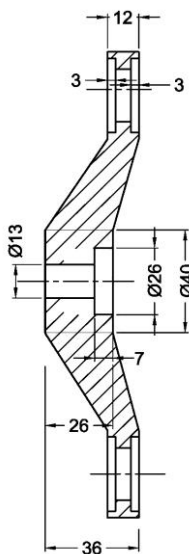
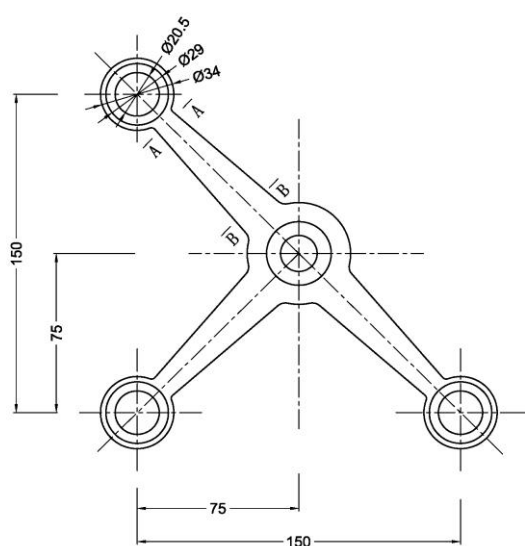
## 150mm Centre to Centre



### 150SP4



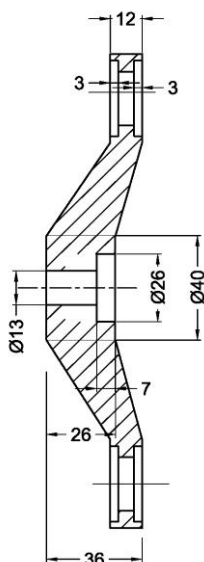
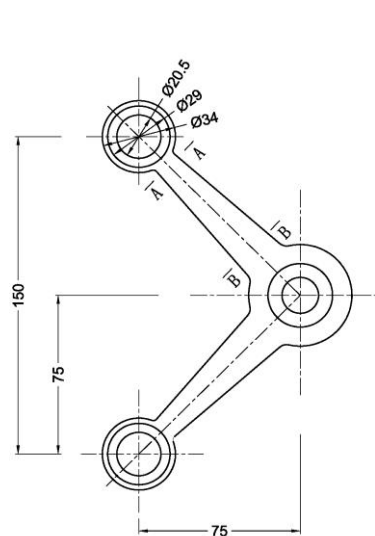
- 4 Way Spider Fittings with 150mm Center to Center
- Material: SUS316
- Satin Stainless Steel



### 150SP3



- 3 Way Spider Fittings with 150mm center to center
- Material: SUS316
- Finish: Satin Stainless Steel



### 150SP2-90

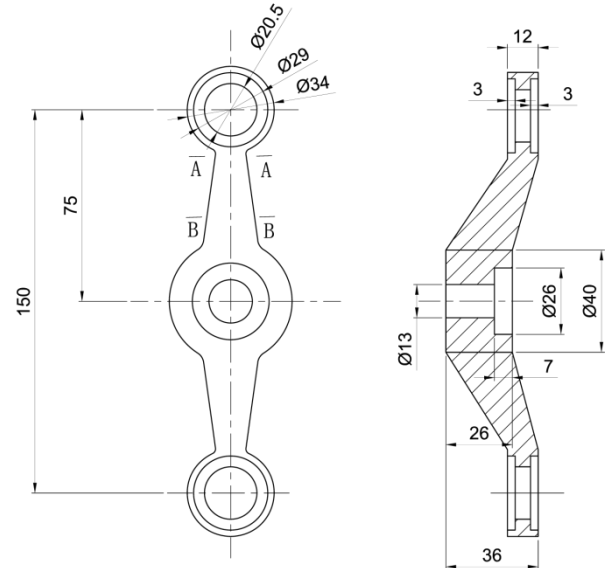


- 2 Way Spider Fittings – 90° with 150mm center to center
- Material: SUS316 Finish: Satin Stainless Steel

## 150SP2-180



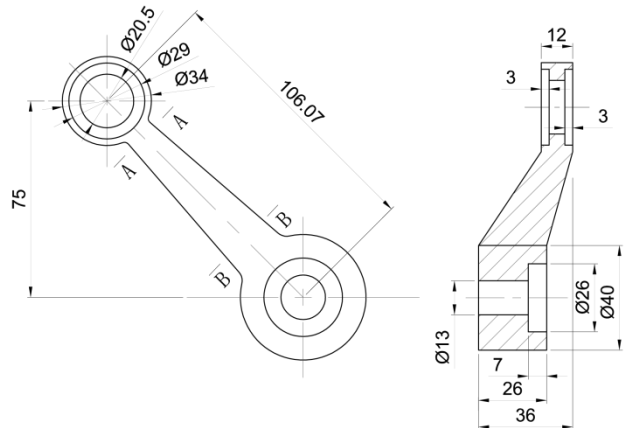
- 2 Way Spider Fittings – 180° with 150mm center to center
- Material: SUS316
- Finish: Satin Stainless Steel



## 150SP1L



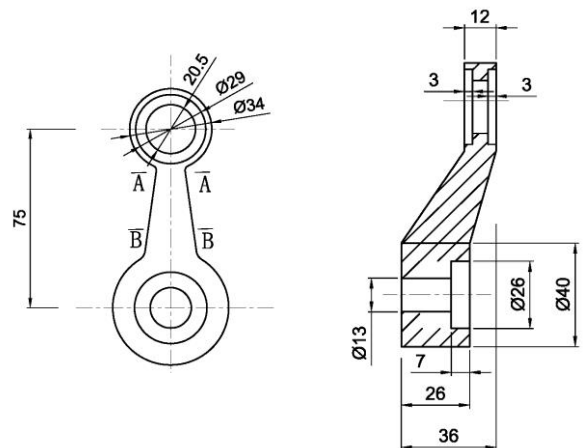
- 1 Way Spider Fittings with 106.1mm Glass to Spider Fittings Base
- Material: SUS316
- Finish: Satin Stainless Steel



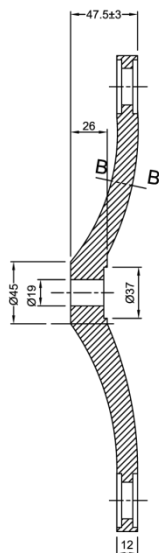
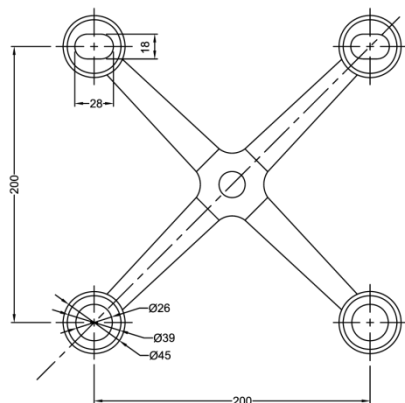
## 150SP1



- 1 Way Spider Fittings with 75mm Glass to Spider Fittings Base
- Material: SUS316
- Finish: Satin Stainless Steel

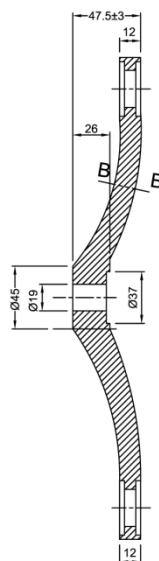
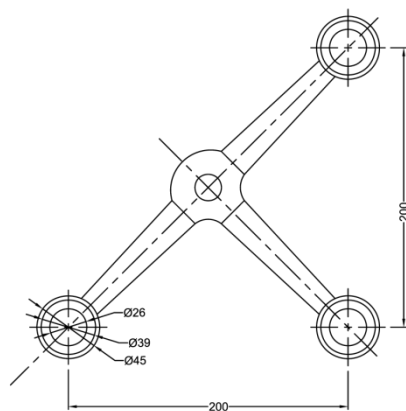


## 200mm Centre to Centre



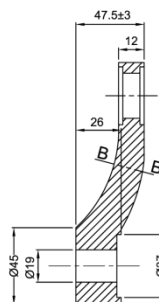
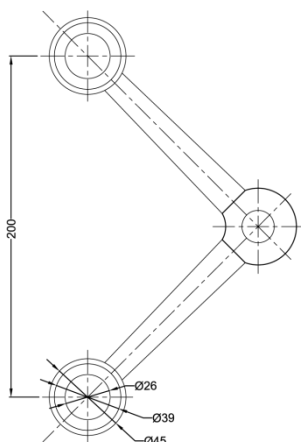
**200SP4**

- 4 Way Spider Fittings with 200mm center to center
- Material: SUS316
- Finish: Satin Stainless Steel



**200SP3**

- 3 Way Spider Fittings with 200mm center to center
- Material: SUS316
- Finish: Satin Stainless Steel



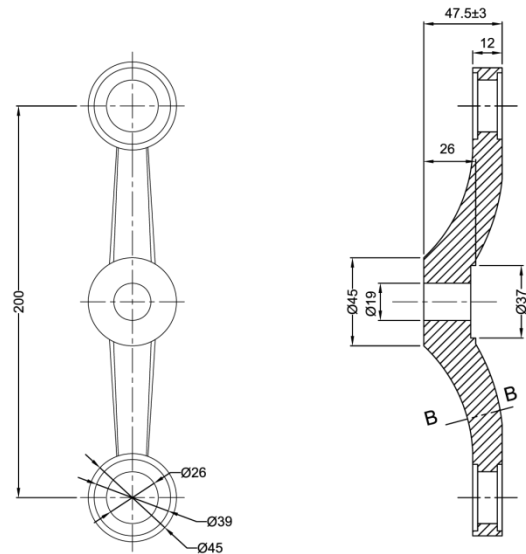
**200SP2-90**

- 2 Way Spider Fittings- 90° with 200mm center to center
- Material: SUS316
- Finish: Satin Stainless Steel

## 200SP2-180



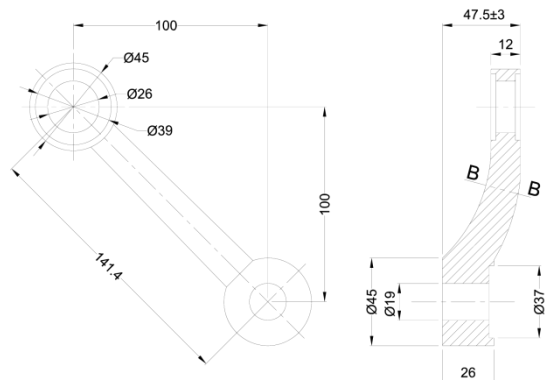
- 2 Way Spider Fittings- 180° with 200mm center to center
- Material: SUS316
- Finish: Satin Stainless Steel



## 200SP1L



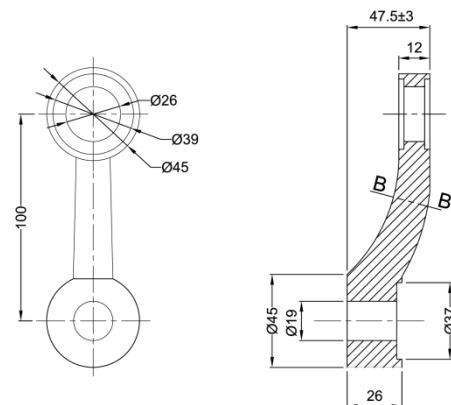
- 1 Way Spider Fittings with 141.4mm Glass to Spider Fittings Base
- Material: SUS316
- Finish: Satin Stainless Steel



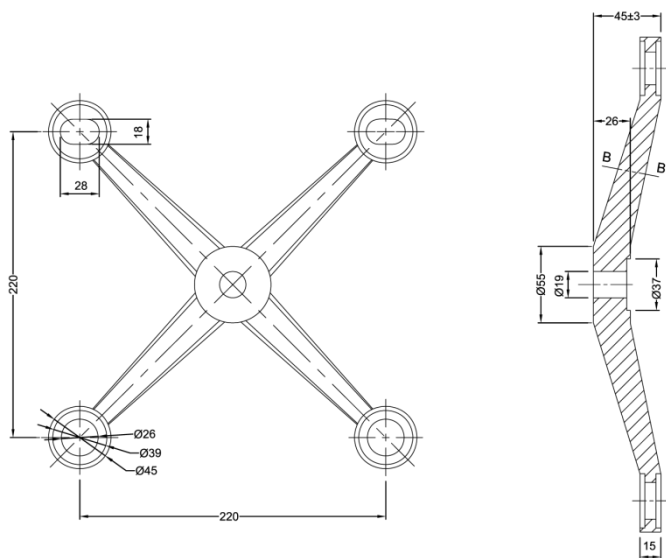
## 200SP1



- 1 Way Spider Fittings with 100mm Glass to Spider Fittings Base
- Material: SUS316
- Finish: Satin Stainless Steel

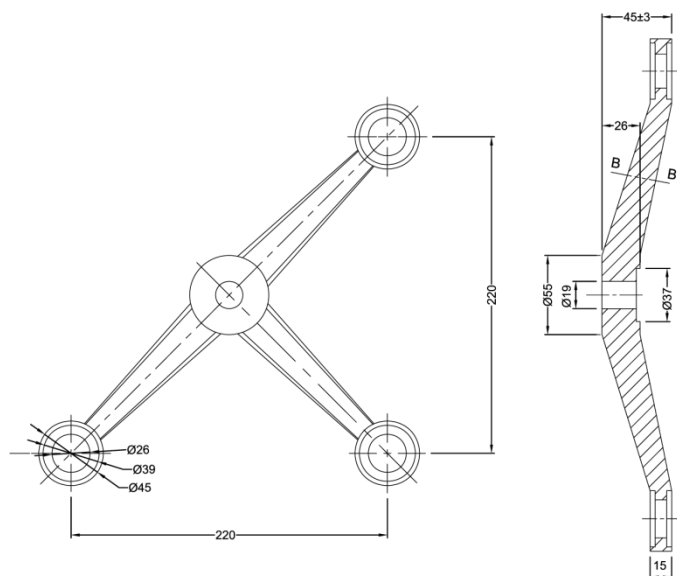


## 220mm Centre to Centre



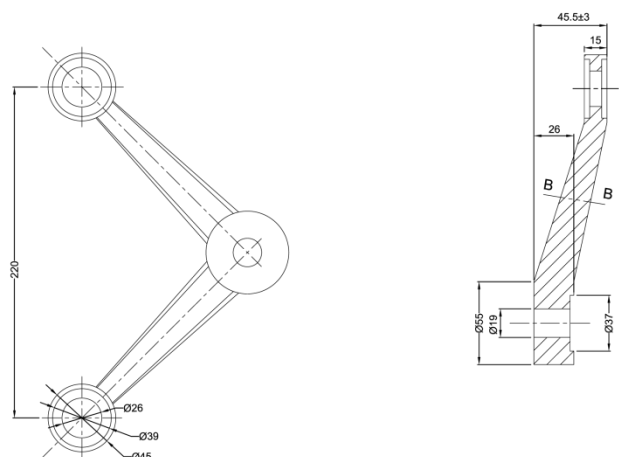
**220SP4**

- 4 Way Spider Fittings with 220mm center to center
- Material: SUS316
- Finish: Satin Stainless Steel



**220SP3**

- 3 Way Spider Fittings with 220mm center to center
- Material: SUS316
- Finish: Satin Stainless Steel



**220SP2-90**

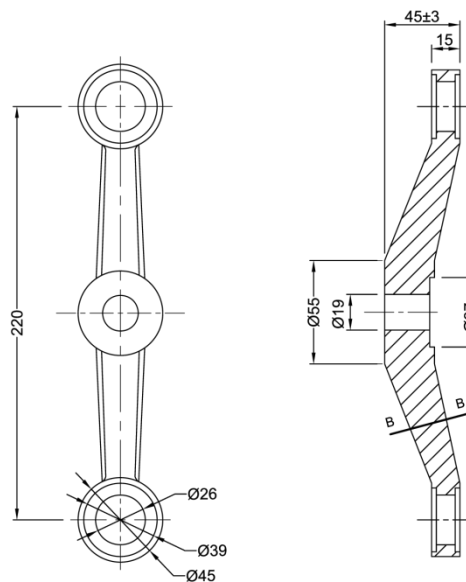
- 2 Way Spider Fittings-90° with 220mm center to center
- Material: SUS316
- Finish: Satin Stainless Steel



## 220SP2-180



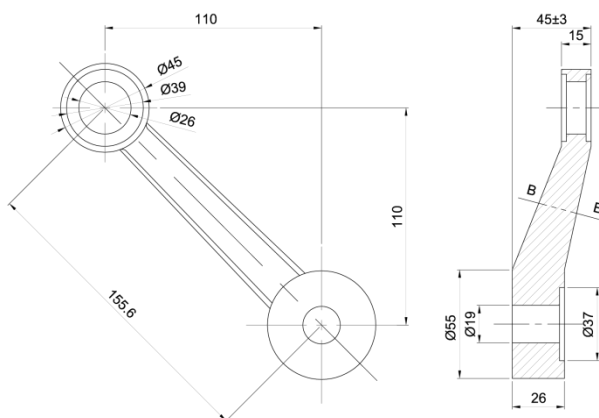
- 2 Way Spider Fittings- 180° with 220mm center to center
- Material: SUS316
- Finish: Satin Stainless Steel



## 220SP1L



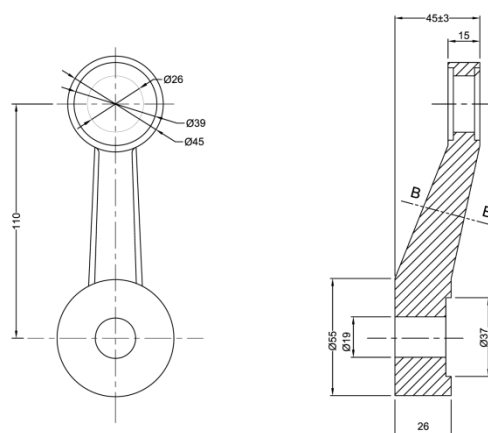
- 1 Way Spider Fitting with 155mm Glass to Spider Base
- Material: SUS316
- Finish: Satin Stainless Steel



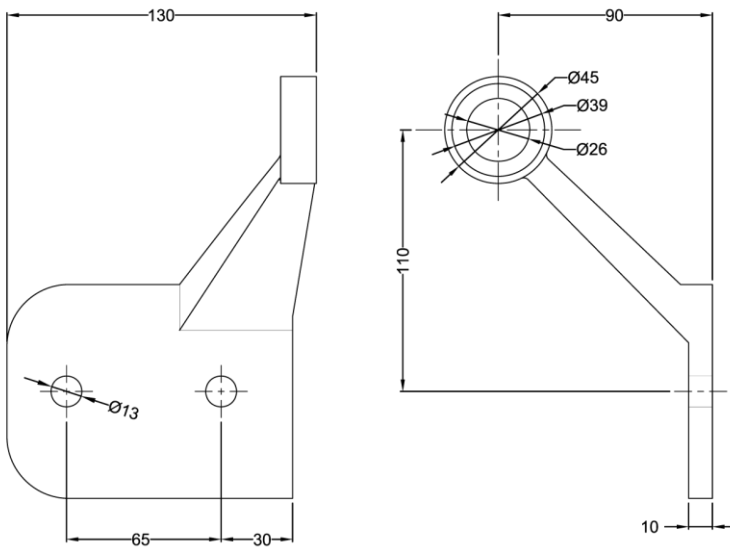
## 220SP1



- 1 Way Spider Fitting with 110mm Glass to Spider Base
- Material: SUS316
- Finish: Satin Stainless Steel



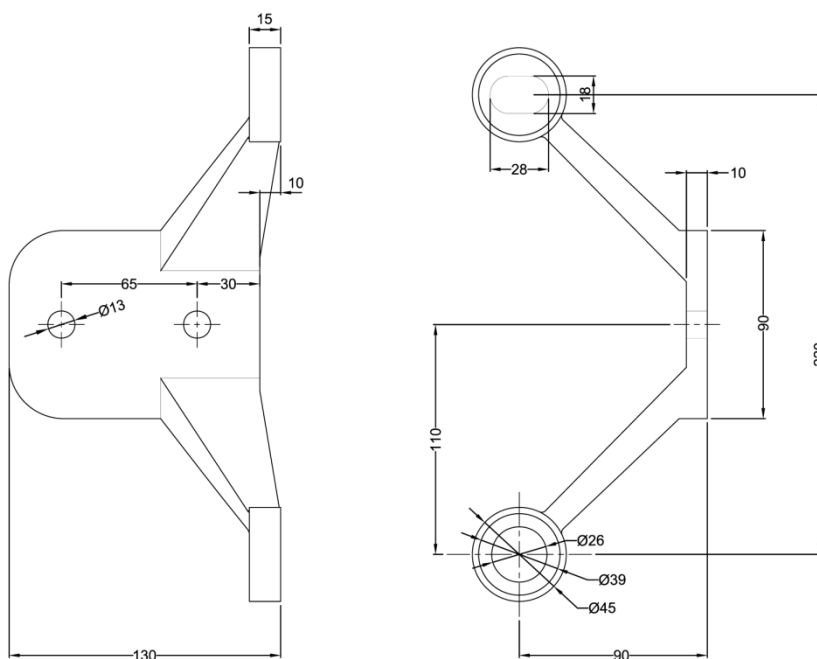
## WALL MOUNT



### 220SP1-WM



- 1 Way Spider Fitting Wall Mount
- Options : Left hand : 220SP1-WM (LH)  
Right hand : 220SP1-WM (RH)
- Material : SUS316
- Finish: Satin Stainless Steel



### 220SP2-WM

220mm Centre to Centre

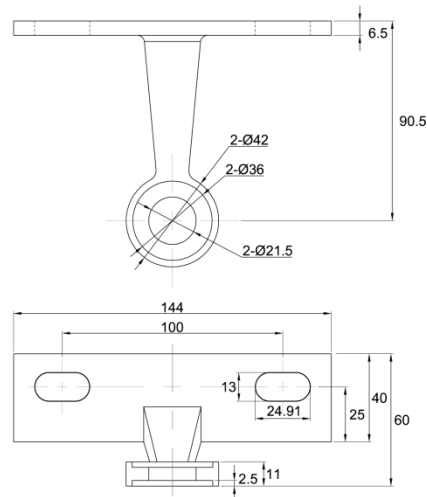


- 2 Way Spider Fitting Wall Mount
- Material : SUS316
- Finish: Satin Stainless Steel



## FIN SPIDER FITTINGS

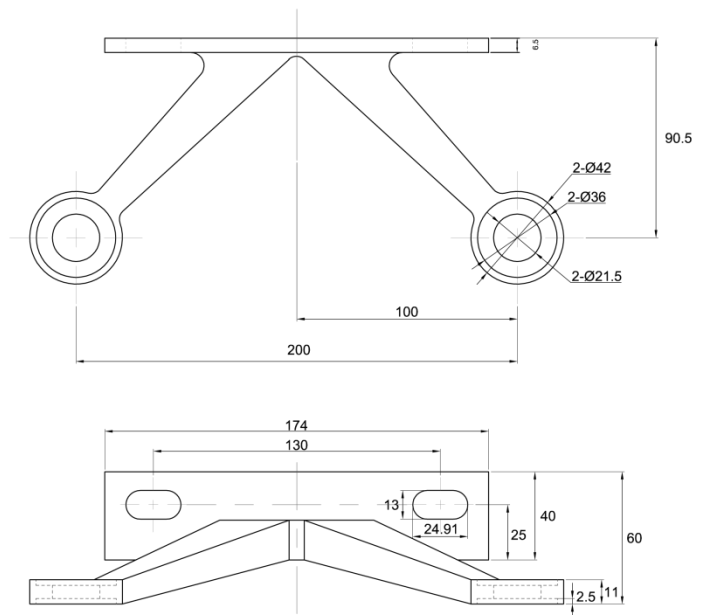
### 200SP2-FT



- 2 Way Fin Spider Fitting
- Includes Bolt and Nuts
- Use SP-AR04 flathead Articulate Routel only
- Material : SUS316
- Finish: Satin Stainless Steel

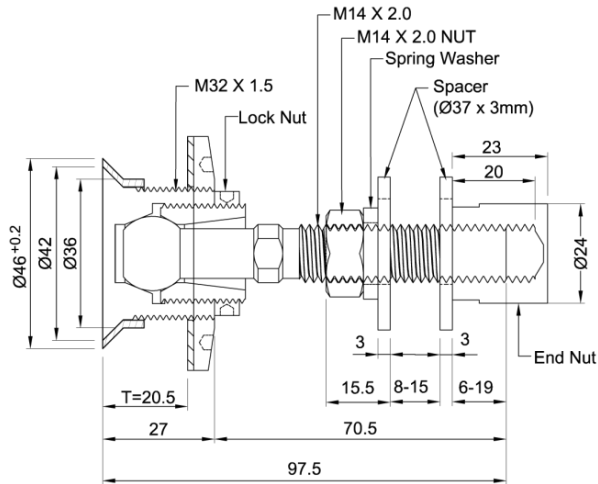
### 200SP4-FT

200mm Centre to Centre



- 4 Way Fin Spider Fitting
- Includes Bolt and Nuts
- Use SP-AR04 Flathead Articulate Routel only
- Material : SUS316
- Finish: Satin Stainless Steel

## ARTICULATE ROUTEL



### SP-AR01 17N

*Countersunk Articulate Routel*



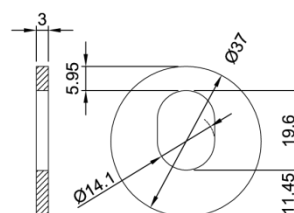
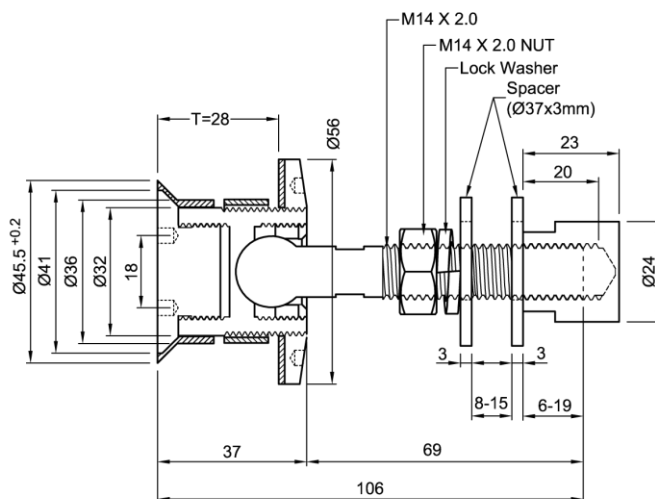
- Countersunk Articulate Routel
- For glass thickness of  $\leq 17.52\text{mm}$
- Material: SUS316

### SP-AR01F

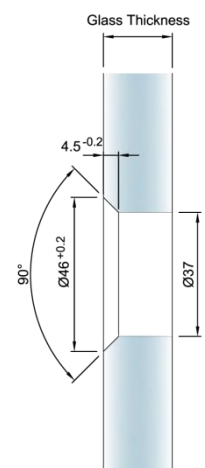
*Front Fix Countersunk Articulate Routel*



- For glass thickness of  $\leq 21.52\text{mm}$
- Material: SUS316



Ø37 x 2.5mm Spacer



Glass Preparation  
– User's discretion Required

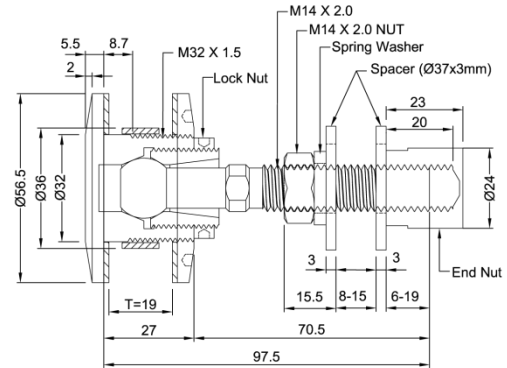
## SP-AR02 17N & SP-AR02 26N

*Flathead Articulate Routel*

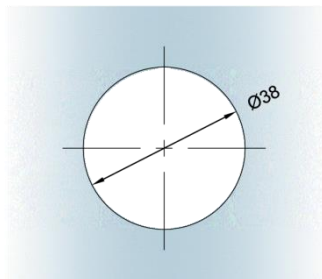
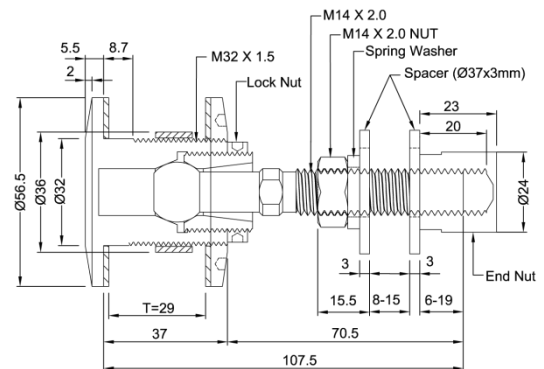


- For glass thickness of 17.52mm for SP-AR02 17N and 26mm for SP-AR02 26N
- Material: SUS316

### SP-AR02 17N



### SP-AR02 26N



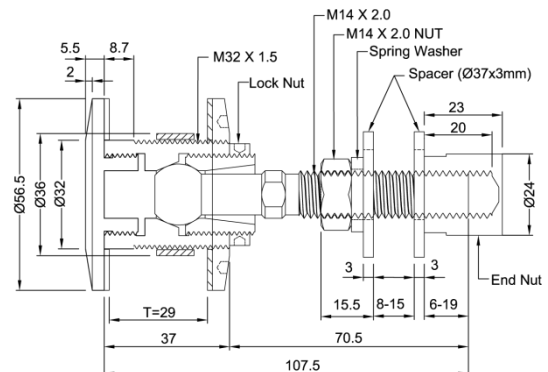
**Glass Preparation**  
– User's discretion Required

## SP-AR02F 26N

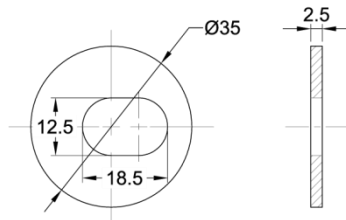
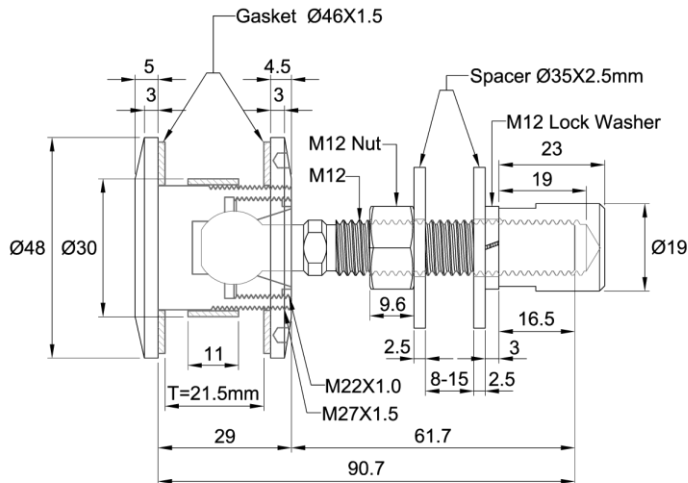
*Front Fix Flathead Articulate Routel*



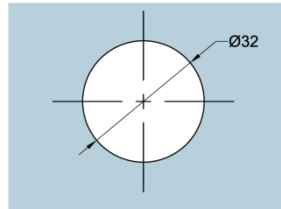
- For glass thickness of  $\leq 21.52$ mm
- Material: SUS316



## ARTICULATE ROUTEL



Ø35 x 2.5mm Spacer



Glass Preparation  
– User's discretion Required

### SP-AR04

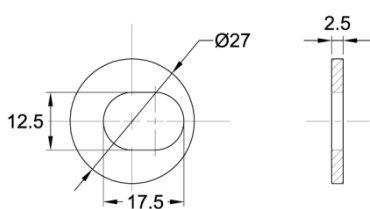
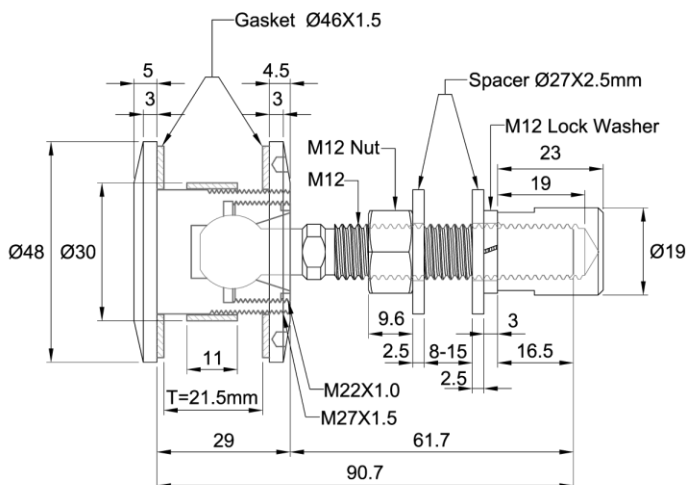
*Flathead Articulate Routel*



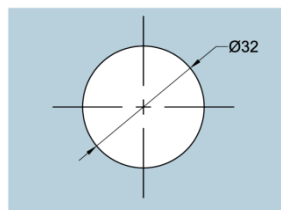
- Suitable for 200SP2-FT and 200SP4-FT Fin Spider Only
- For glass thickness of ≤ 15mm
- Material: SUS316

### SP-AR06

*Flathead Articulate Routel*



Ø27 x 2.5mm Spacer



Glass Preparation  
– User's discretion Required



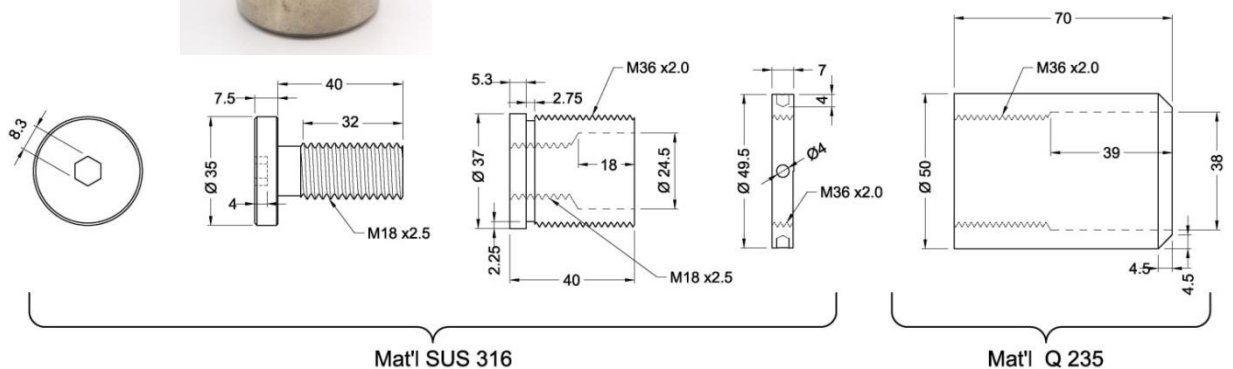
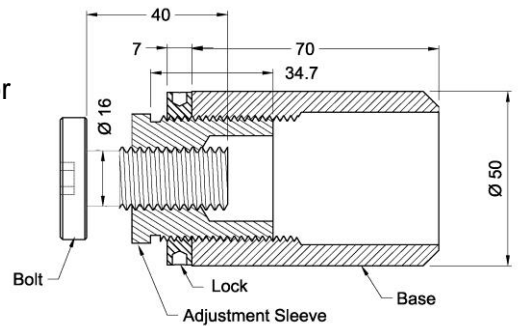
- Suitable for 150mm Spider Fitting Only
- Material: SUS316

## SPIDER BASE

### SP-Z01

#### Spider Fitting Base

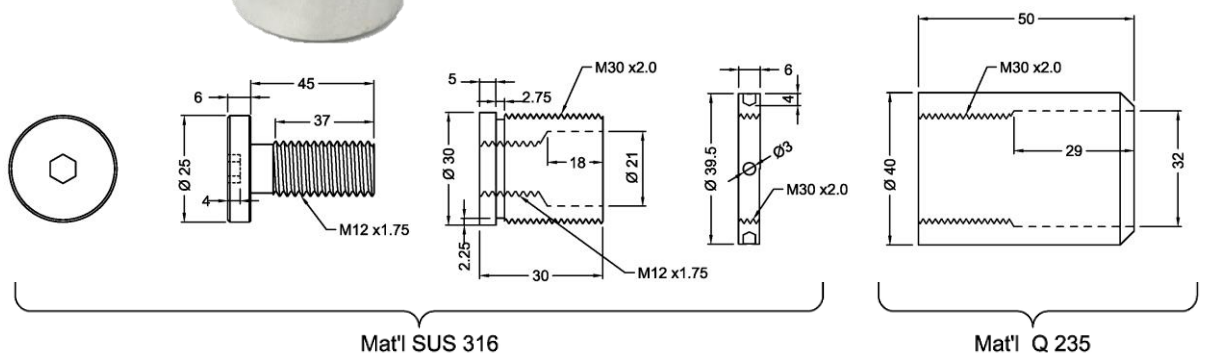
- Comprising of 2 parts: SUS316 stainless steel connector to spider fitting and Low Carbon Steel to structural support



### SP-Z06

#### Spider Fitting Base

- Suitable for 150mm Spider Fitting Only
- Comprising of 2 parts: SUS316 connector to spider fitting and Low Carbon Steel to structural support



## Applications

- Available in various center - center combination: 100mm, 150mm, 200mm, 250mm

## Finishes

- Satin Stainless Steel

## Material

- SUS316

## Test Report

PSB Corporation, Singapore

- AISI 316 – Chemical Composition Analysis Test
- Load Capability Test

## Design Load

Design Axial Load Capability  
of Single Arm (N) - **Negative WindLoad**

150mm Type	1800
200mm Type	2500
220mm Type	3500
220SP1 / SP2-WM	4000
SP-AR01	4500
SP-AR02 / 02F	4500

Design Radial Load Capability  
of Single Arm (N) – **Self-Weight**

150mm Type	1000
200mm Type	1200
220mm Type	1800
220SP1 / SP2-WM	2000
SP-AR01	2000
SP-AR02 / 02F	2000

### Note:

The above design values shown in the table are considered acceptable in certain countries. It may not be adequate to fulfill acceptance criteria in other countries which require more stringent requirements. It is suggested to multiply the values in the table with a factor of 0.9. Otherwise, the designer needs to test for adequacy against relevant national standard before use.

Due to the company's policy of continuous product development and enhancement, the specifications and details contained in this brochure are subject to alteration without prior notice.

The dimensions, details, specifications and statements made herein or by our representatives arising out of any enquiries are given for information purposes only. They are not intended to have any legal effect and the company will not be bound thereby. The company will only accept obligations which are expressly negotiated for, and agreed and incorporated into written agreements made specifically with its respective customers.