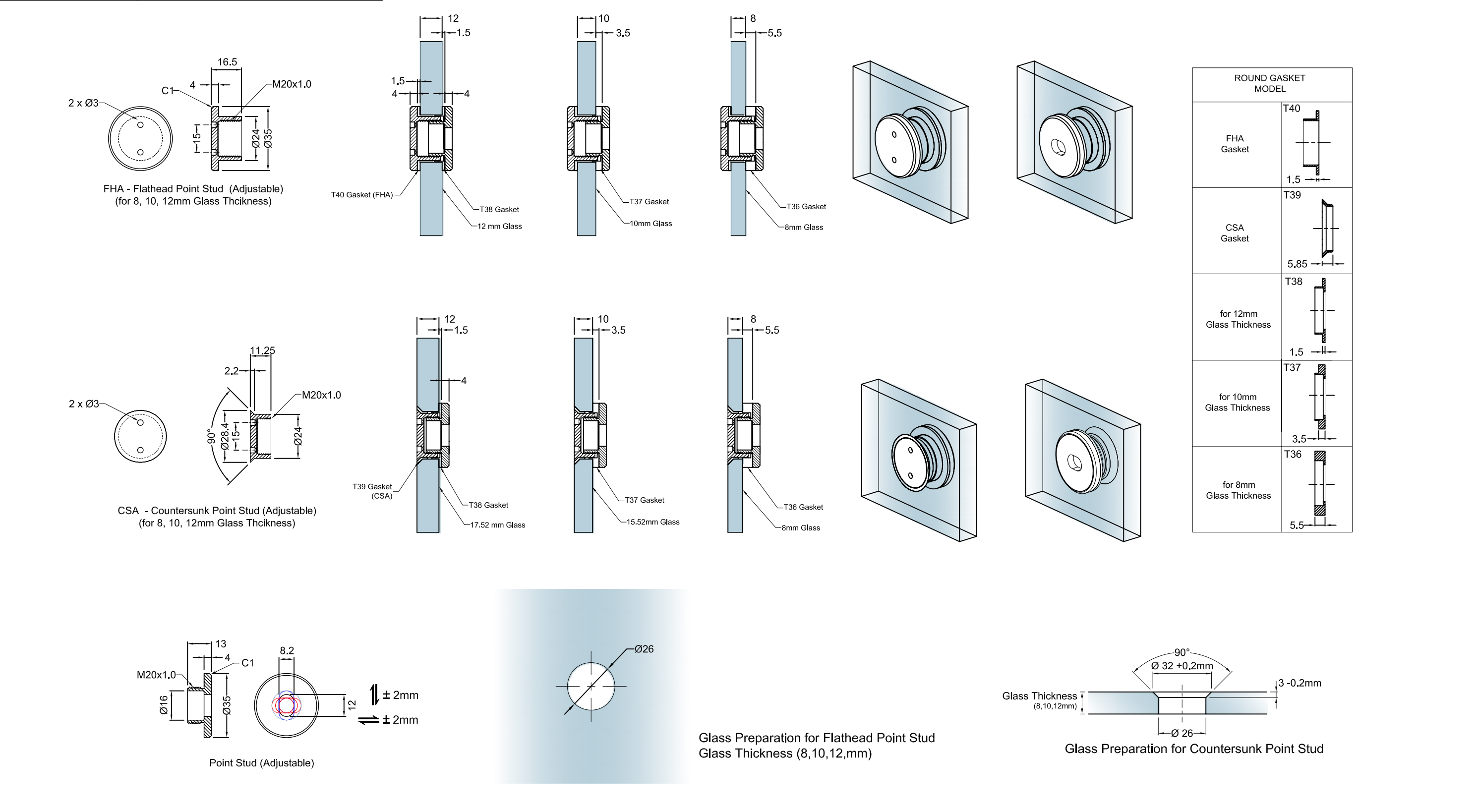

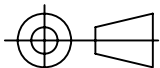
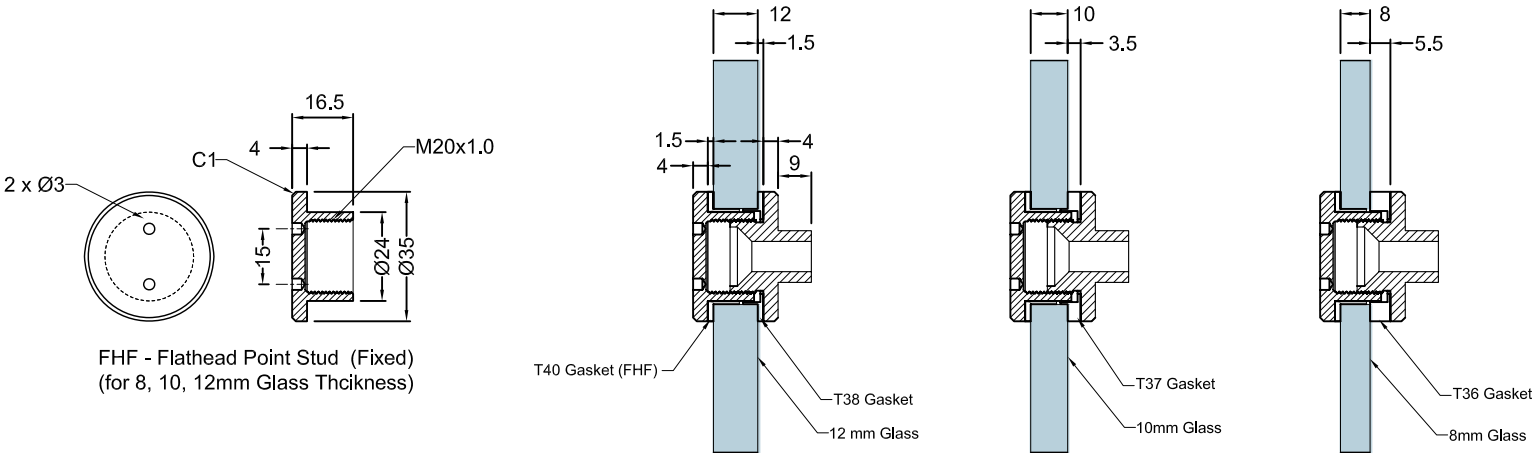


Glass Thickness	8 - 12 mm Glass Thickness
Material	SUS304 Stainless Steel
Product Finish	Satin Stainless Steel
Revision	Update Drawing

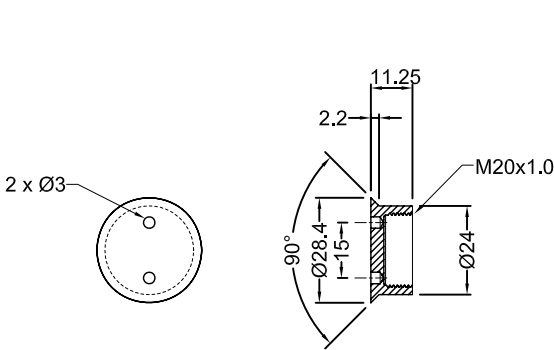


 <p>Preference Pte. Ltd. www.preference.com.sg</p>	Model: FHA - FLATHEAD POINT STUD (ADJUSTABLE) CSA - COUNTERSUNK POINT STUD (ADJUSTABLE)	Disclaimer: This drawing shows the actual stage of product development at the date indicated. No claims or damages in any form can be made against Preference Pte. Ltd. as a result of the interpretation of this drawing. This drawing remains the property of Preference Pte. Ltd. and is made available to third parties only for the duration of contractual obligations. All rights connected with this drawing remain in possession of Preference Pte. Ltd. This drawing may not be copied or handed over to third parties without the express consent of Preference Pte. Ltd.
	Art. No. 	
Date : 08-MAY-2013		

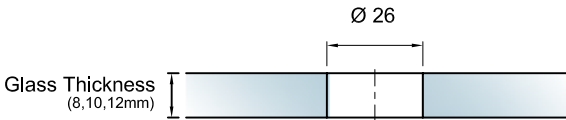
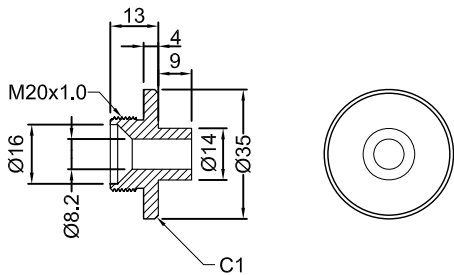
Glass Thickness	8 - 12 mm Glass Thickness
Material	SUS304 Stainless Steel
Product Finish	Satin Stainless Steel
Revision	Update Drawing



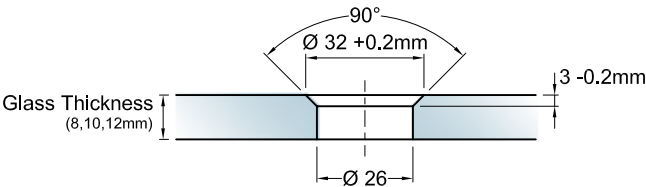
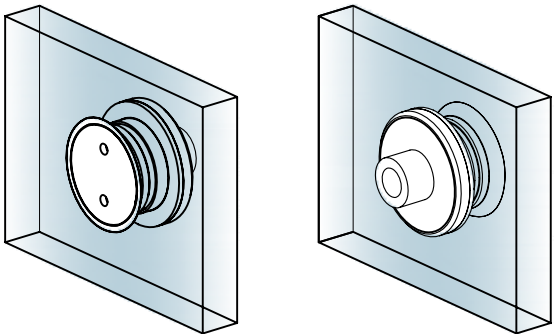
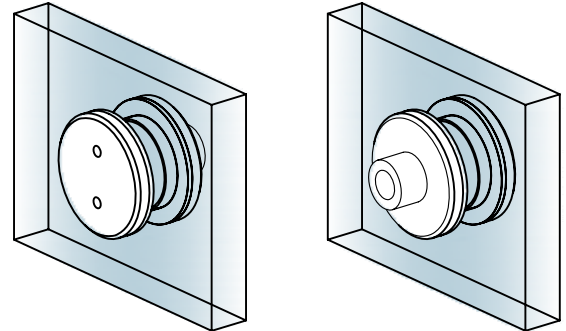
FHF - Flathead Point Stud (Fixed)
(for 8, 10, 12mm Glass Thickness)



CSF - Countersunk Point Stud (Fixed)
(for 8, 10, 12mm Glass Thickness)

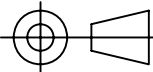


Glass Preparation for Flathead Point Stud

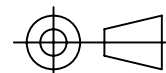
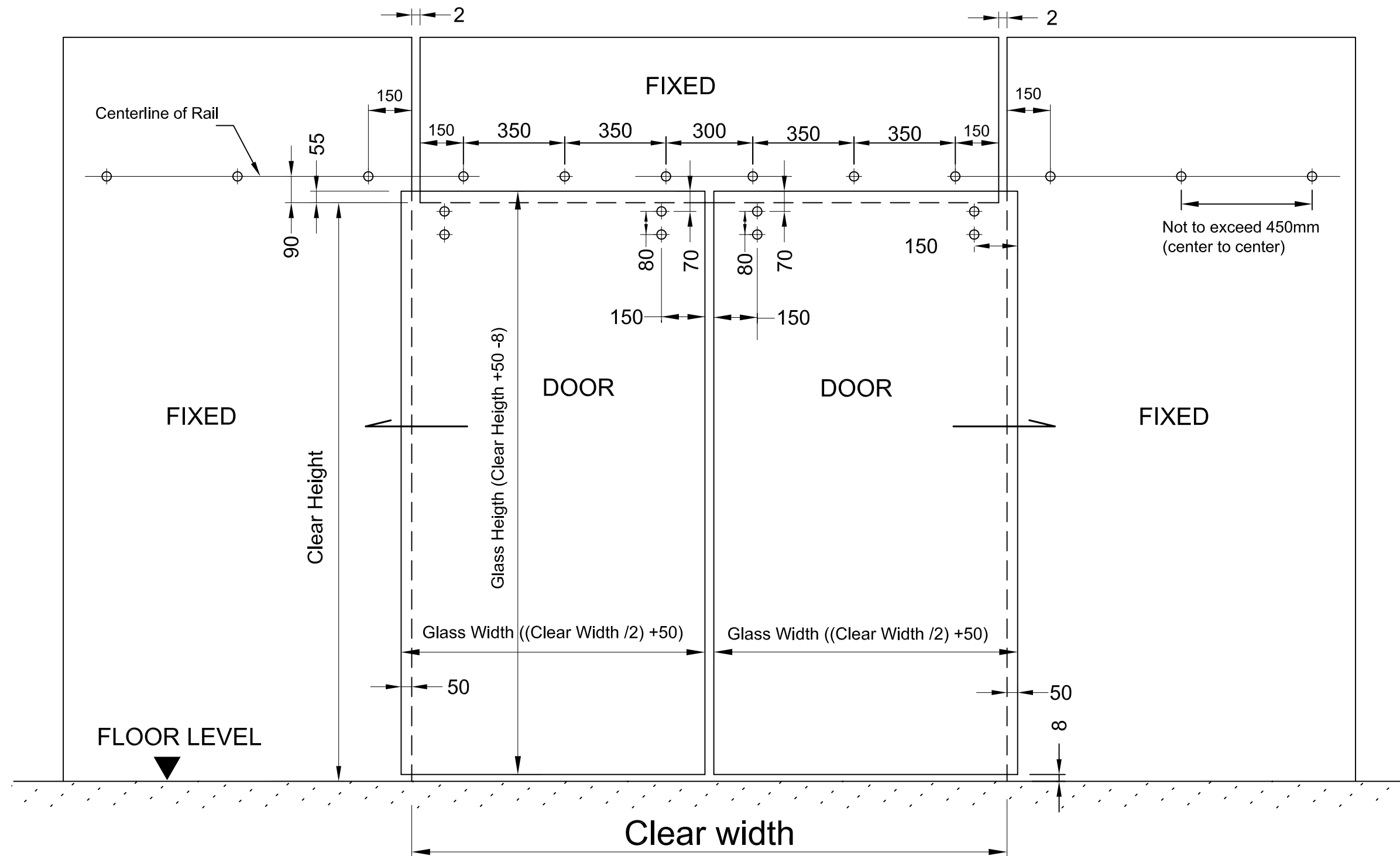


Glass Preparation for Countersunk Point Stud

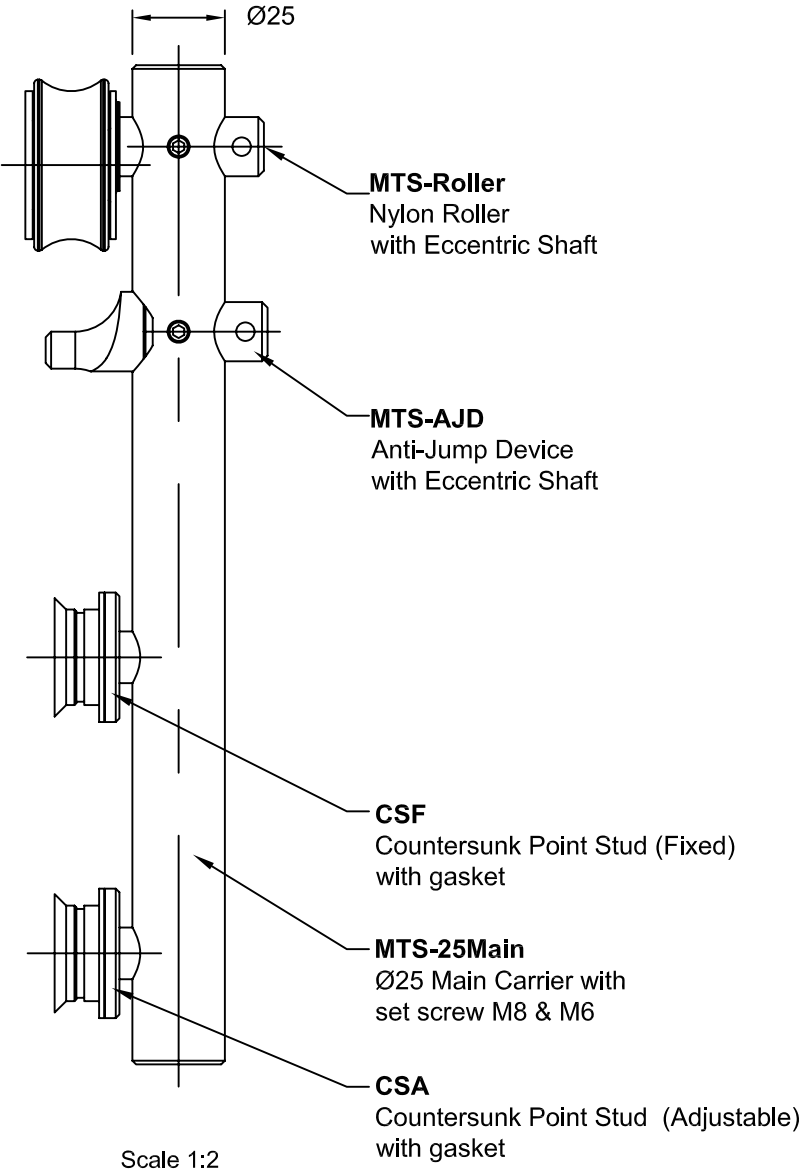
ROUND GASKET MODEL	
FHF Gasket	T40 1.5
CSF Gasket	T39 5.85
for 12mm Glass Thickness	T38 1.5
for 10mm Glass Thickness	T37 3.5
for 8mm Glass Thickness	T36 5.5



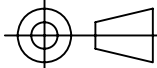
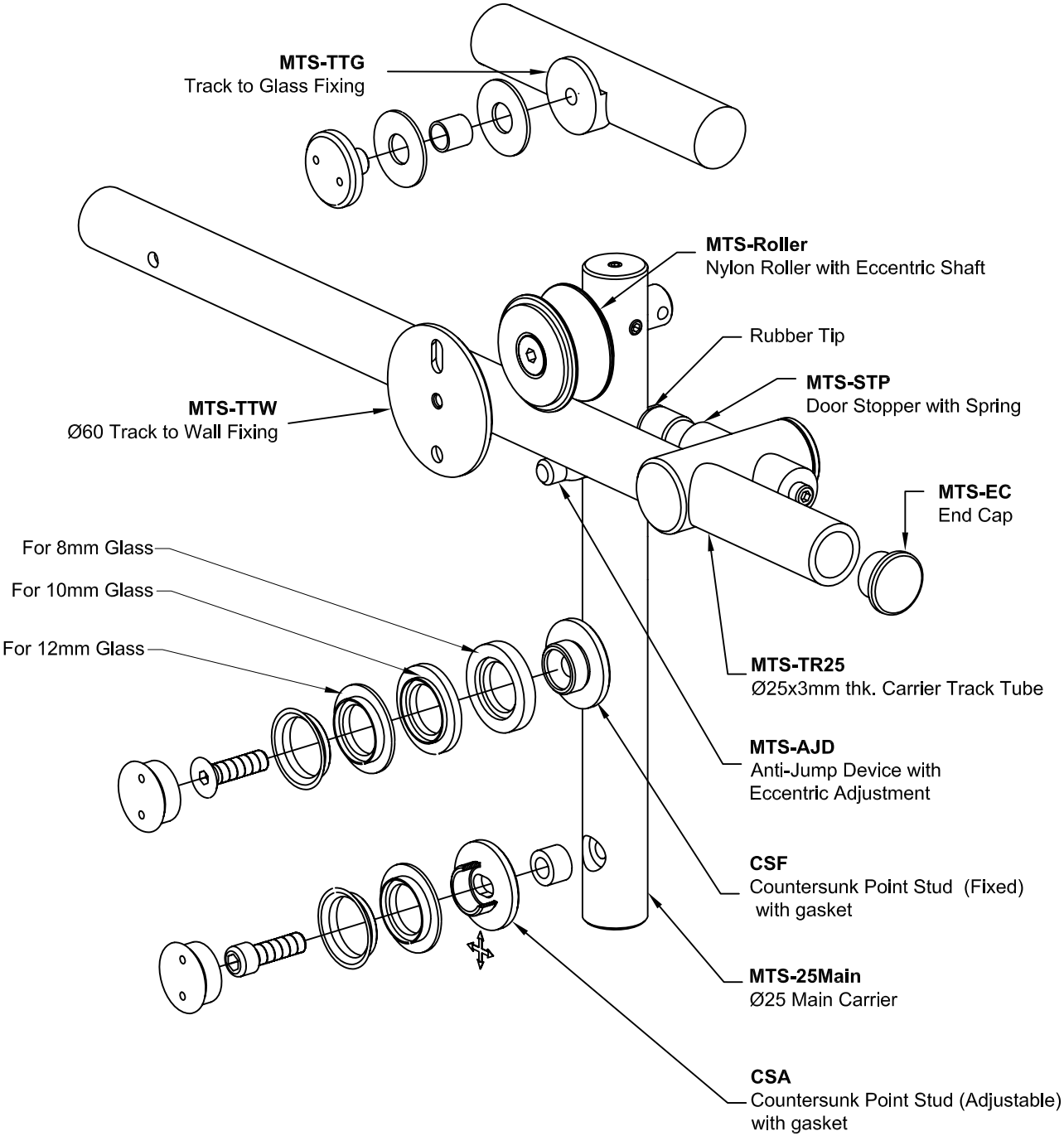
TYPICAL GLASS ELEVATION FOR DOUBLE LEAF GLASS DOOR



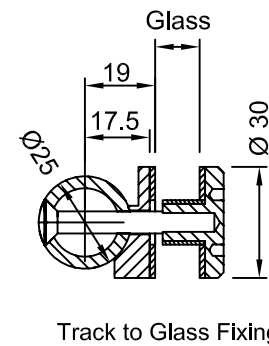
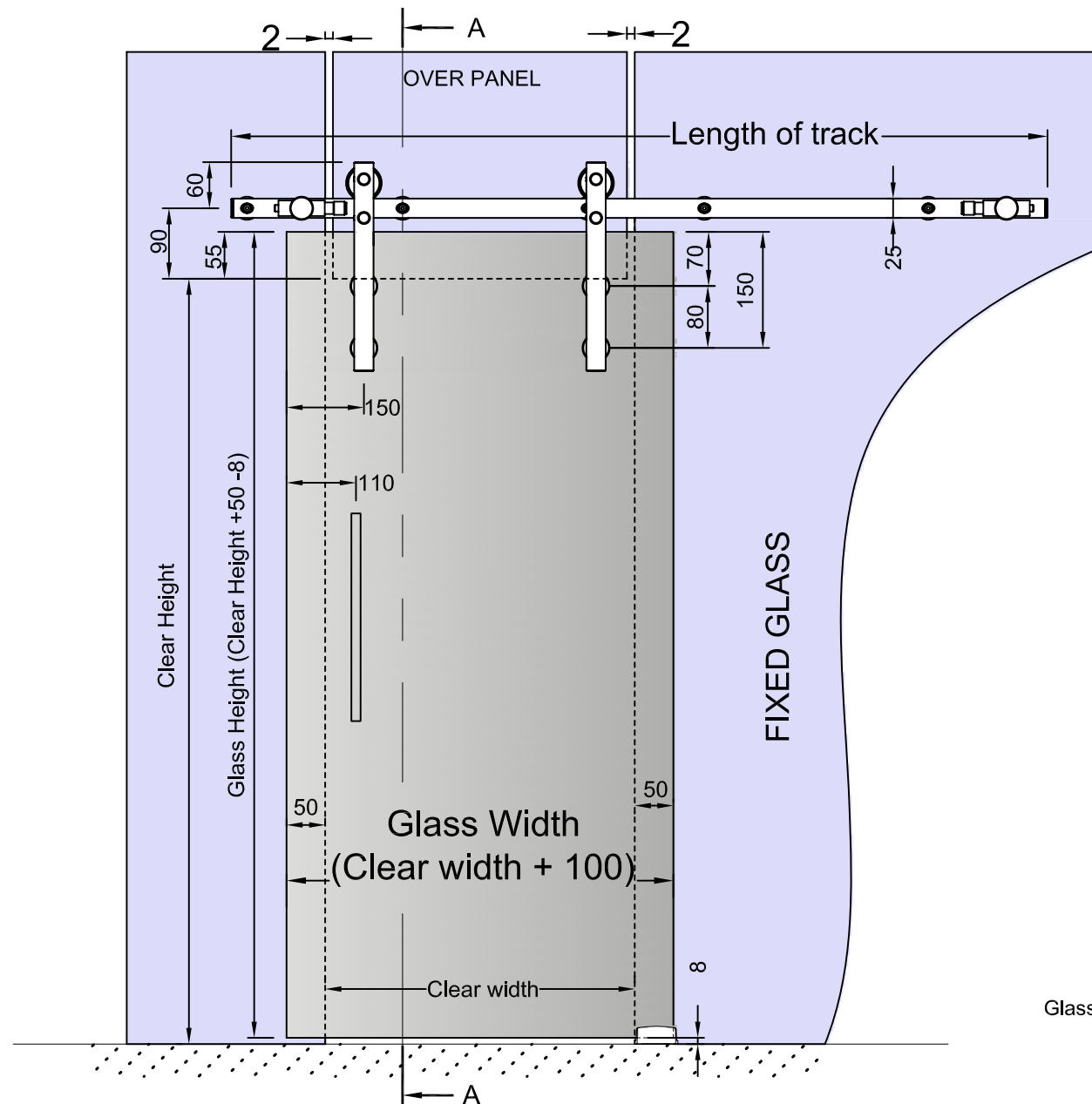
CARRIAGE STUMP ASSEMBLY



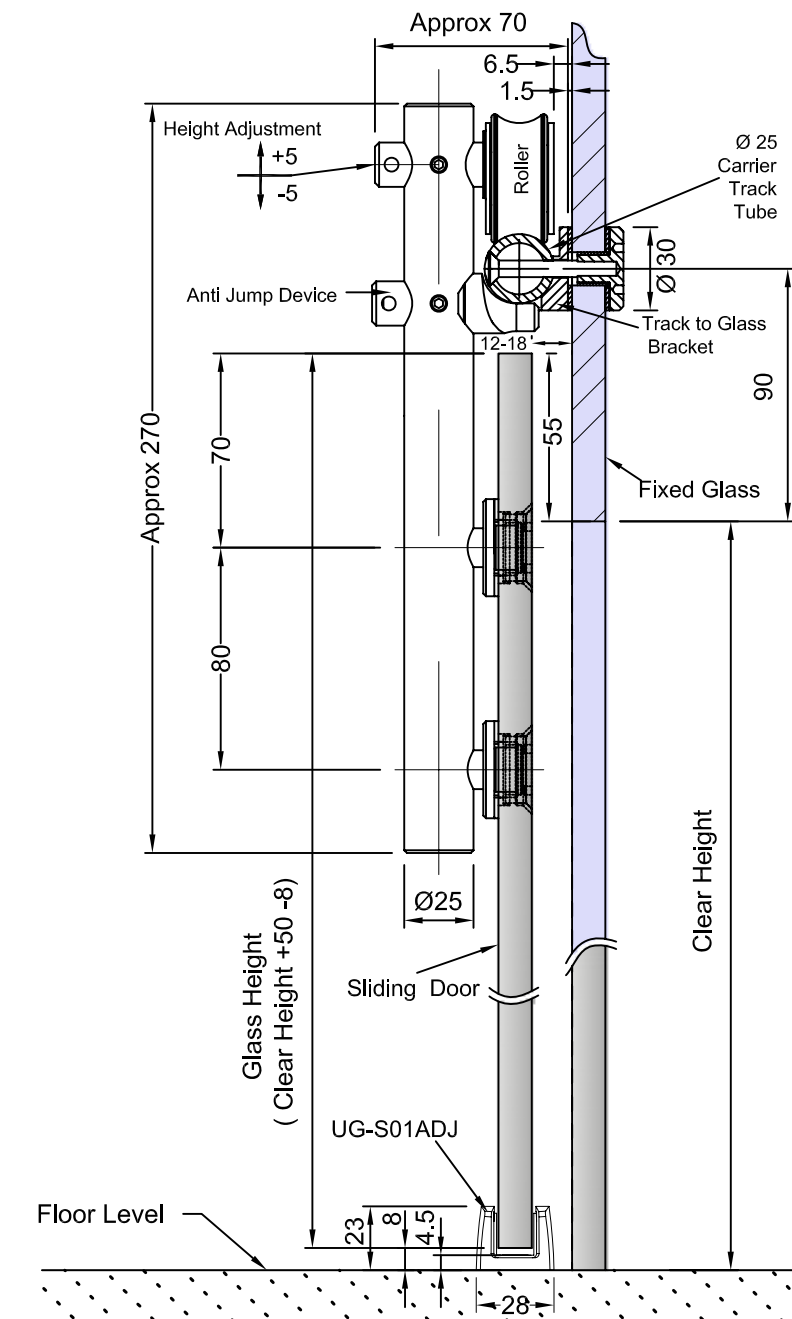
MAIN FITTING COMPONENTS



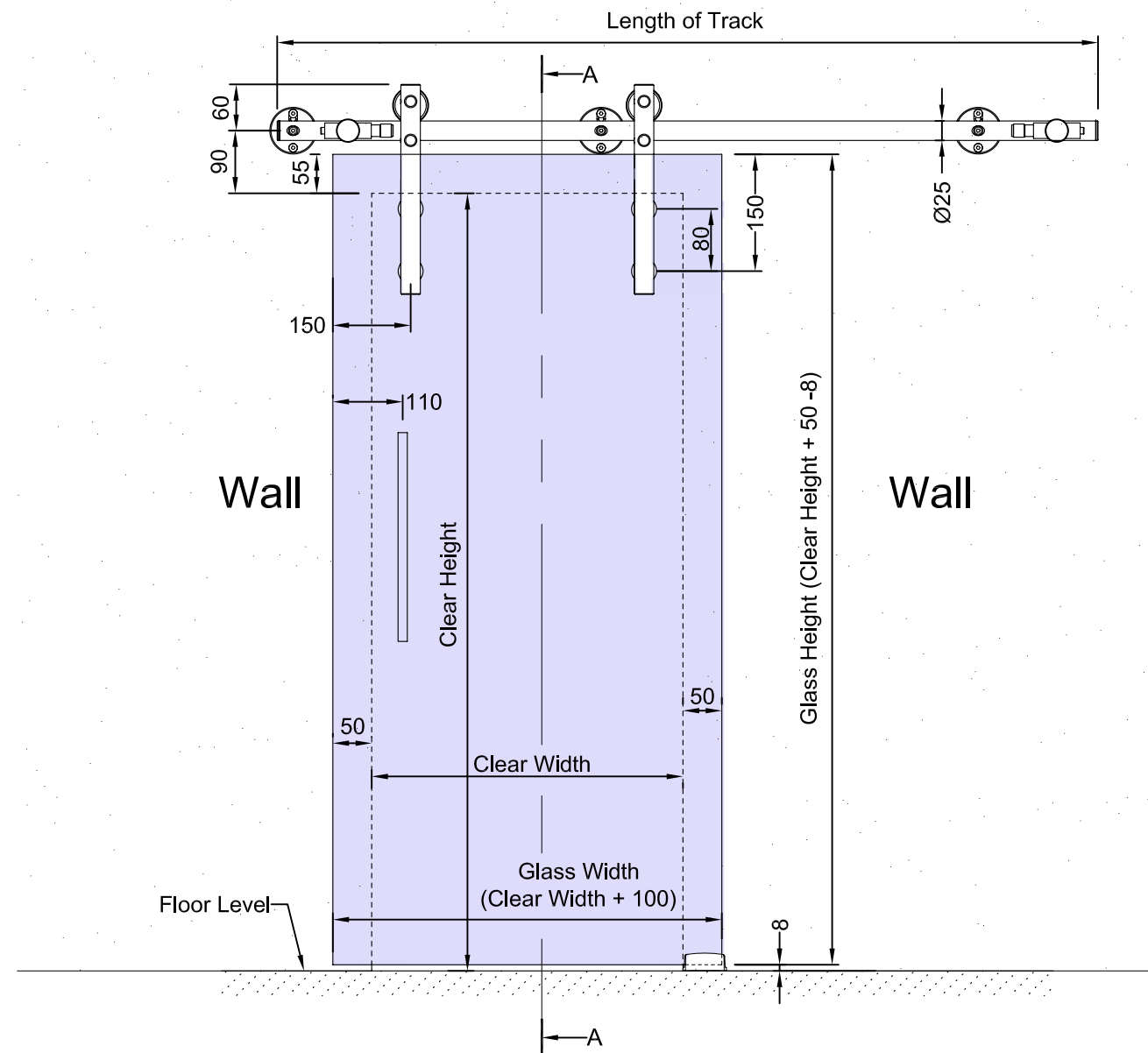
TRACK TO GLASS FIXING (ELEVATION)



TRACK TO GLASS FIXING (Cross Section A-A)



TRACK TO WALL FIXING (ELEVATION)



TRACK TO WALL FIXING (Cross Section A-A)

