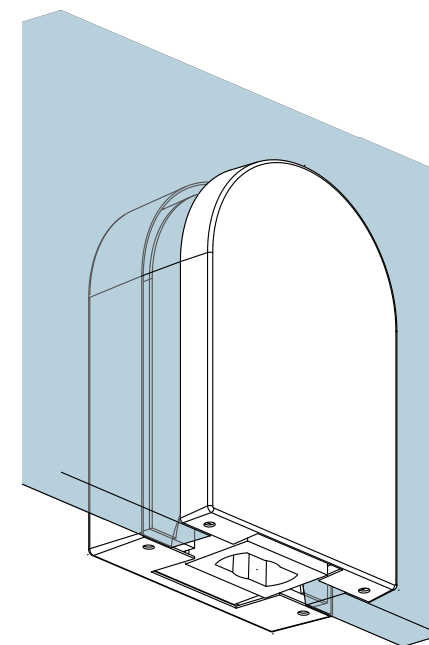
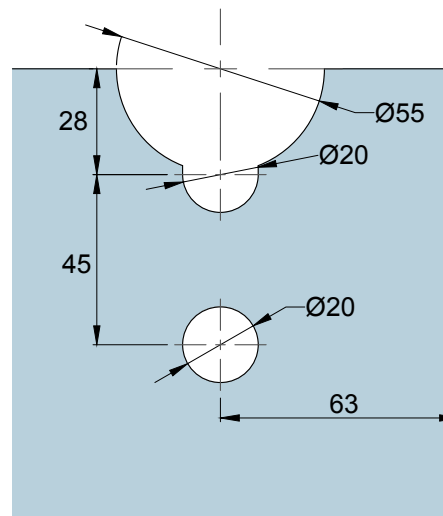
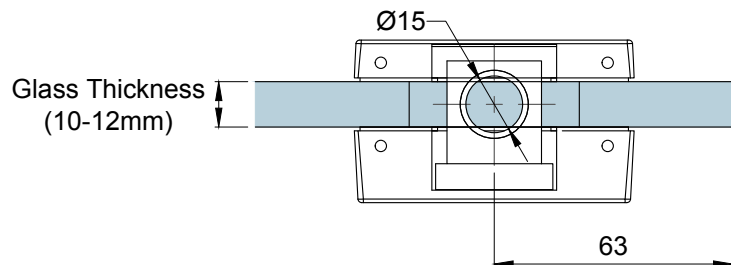


Glass Preparation

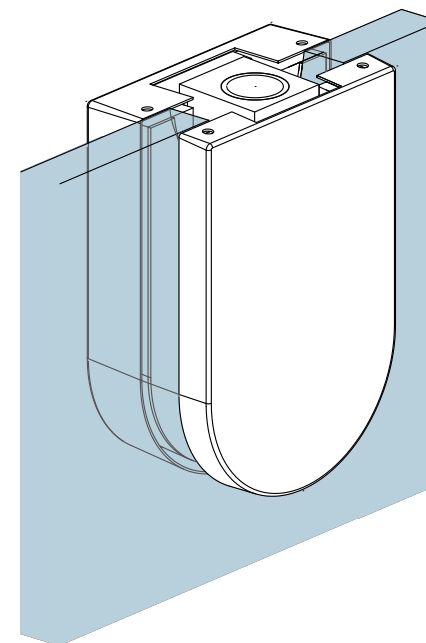
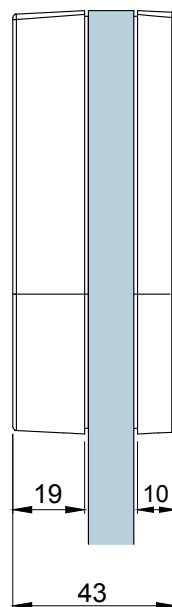
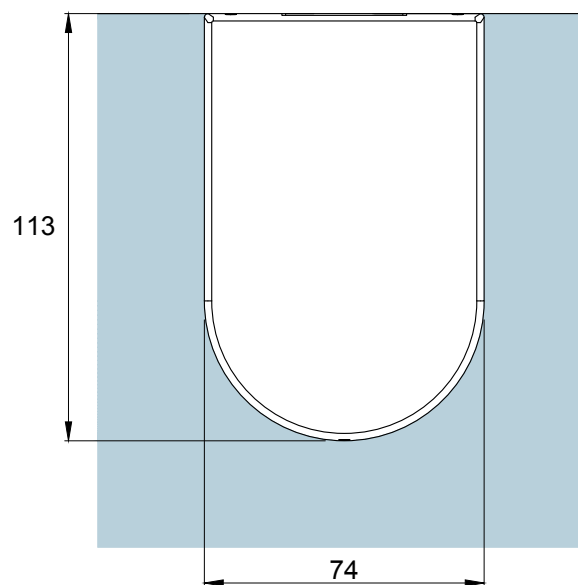
Glass Thickness	10 - 12 mm Glass Thickness
Material	Body: Aluminium Cover: Stainless Steel
Finishes	Polished Stainless Steel Satin Stainless Steel

To suit TD800 / TD750 Floor Spring and PD15 Floor Pivot





Glass Preparation

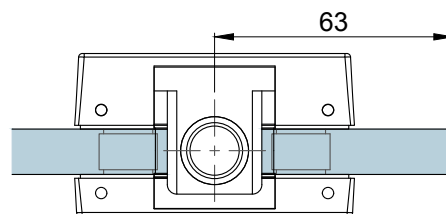
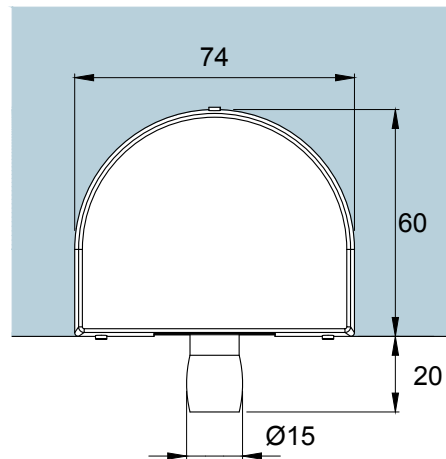
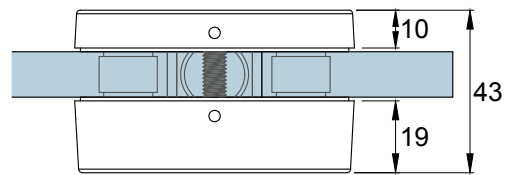


Glass Thickness	10 - 12 mm Glass Thickness
Material	Body: Aluminium Cover: Stainless Steel
Finishes	Polished Stainless Steel Satin Stainless Steel

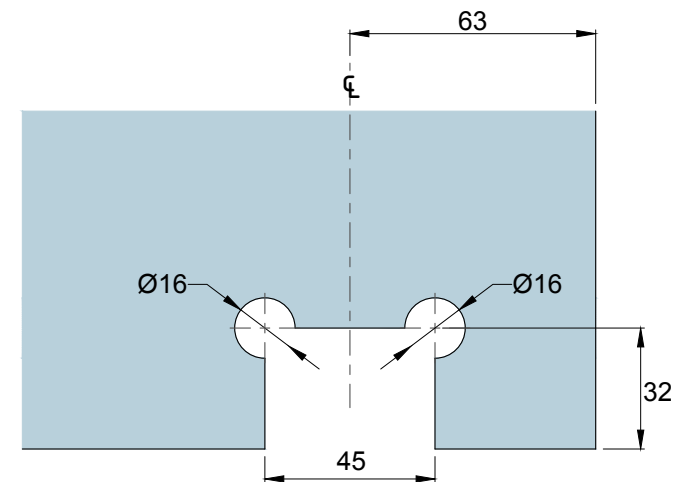
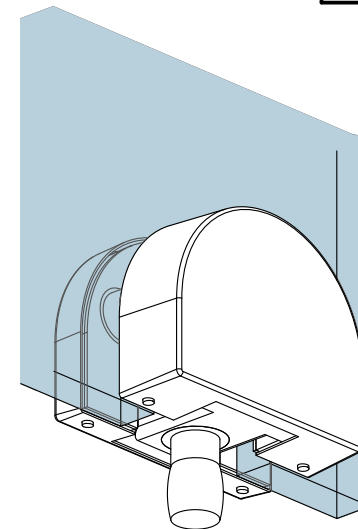
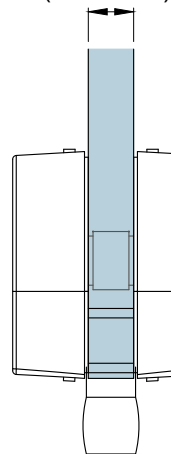
To suit PD24 Top Pivot, PM30 Overpanel Patch

Glass Thickness	10 - 12 mm Glass Thickness
Material	Body: Aluminium Cover: Stainless Steel
Finishes	Polished Stainless Steel Satin Stainless Steel

To suit PM20 Top Patch

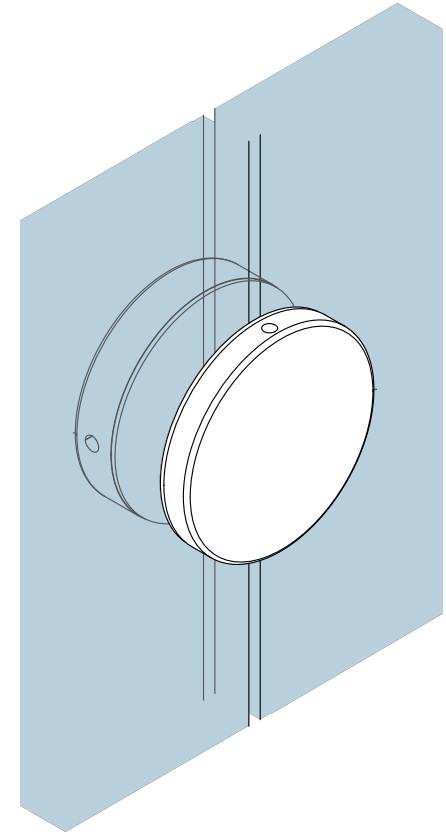
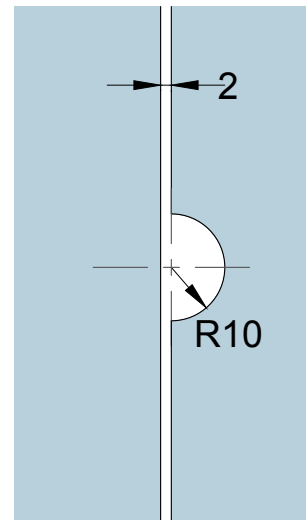
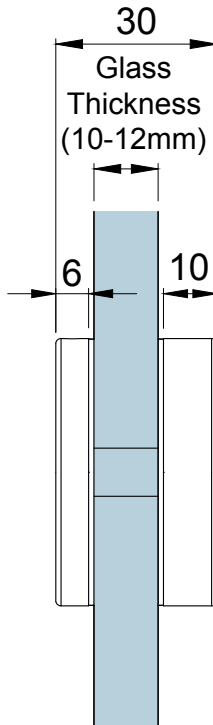
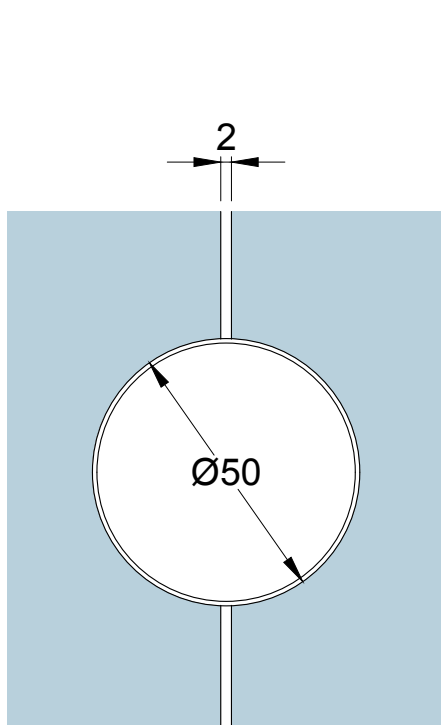


Glass Thickness  
(10-12mm)



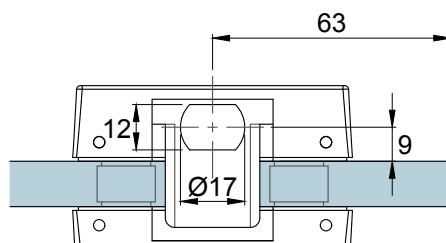
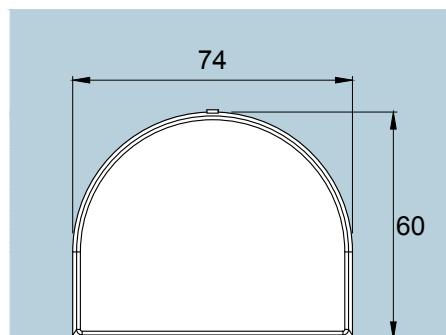
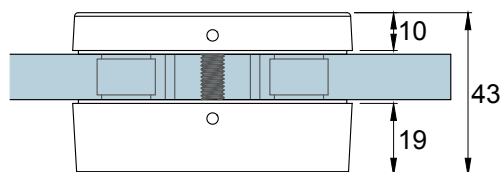
Glass Preparation

Glass Thickness	10 - 12 mm Glass Thickness
Material	Body: Aluminium Cover: Stainless Steel
Finishes	Polished Stainless Steel Satin Stainless Steel

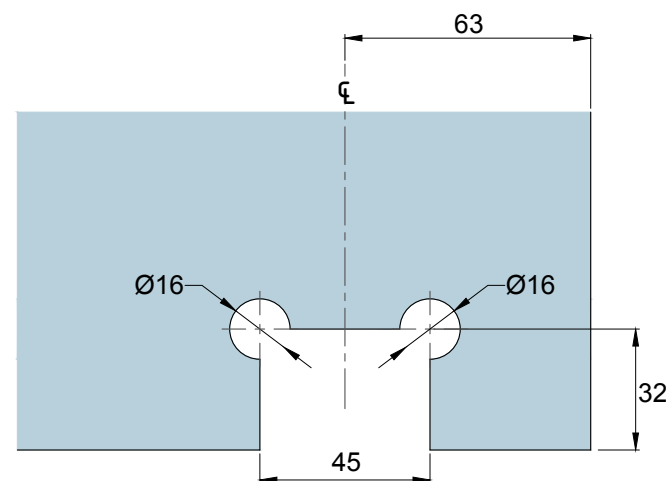
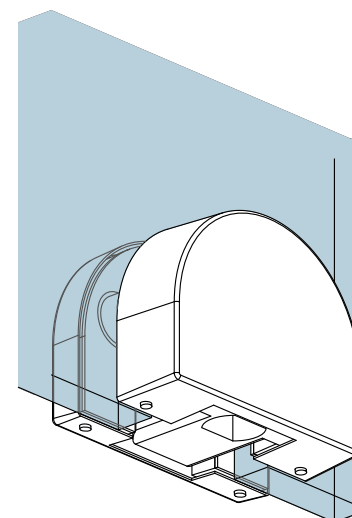
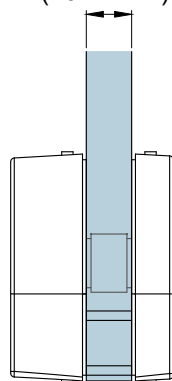


Glass Preparation

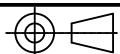
Glass Thickness	10 - 12 mm Glass Thickness
Material	Body: Aluminium Cover: Stainless Steel
Finishes	Polished Stainless Steel Satin Stainless Steel



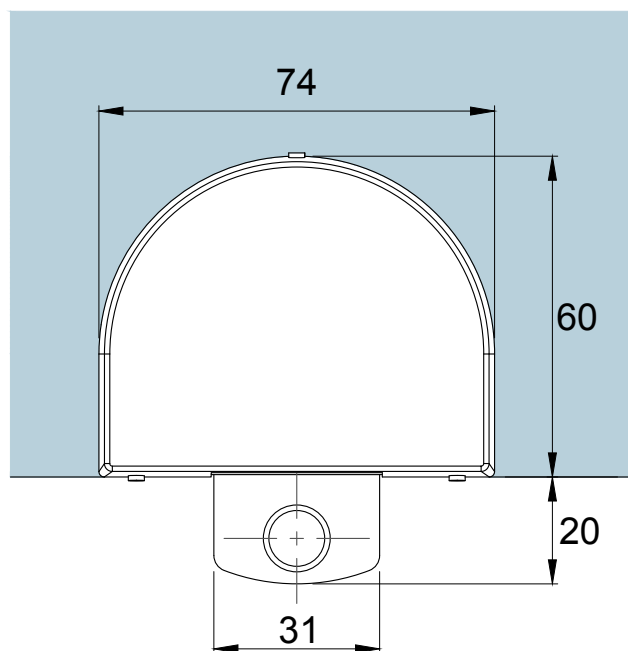
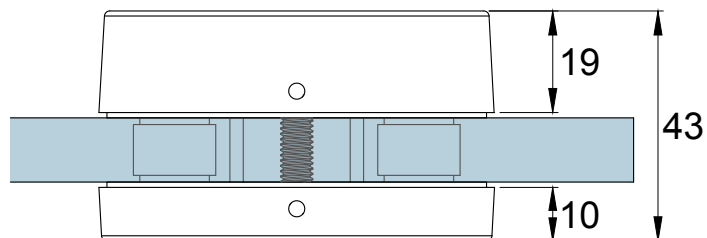
Glass Thickness  
(10-12mm)



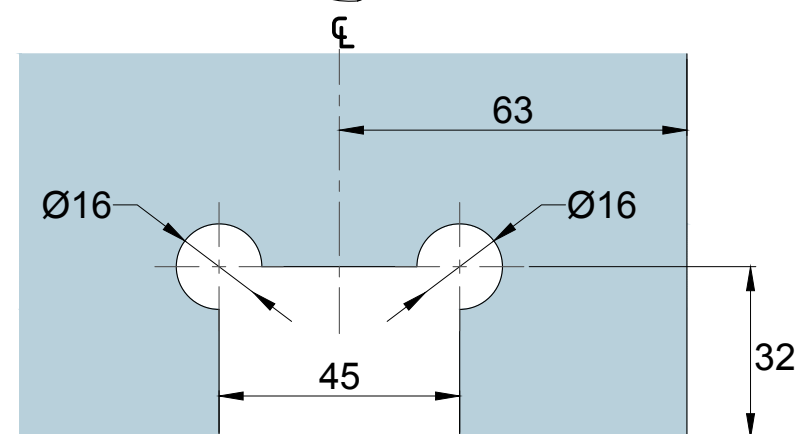
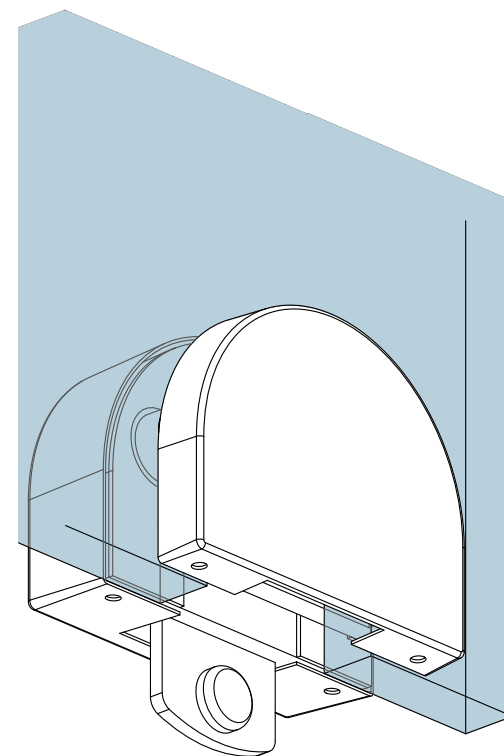
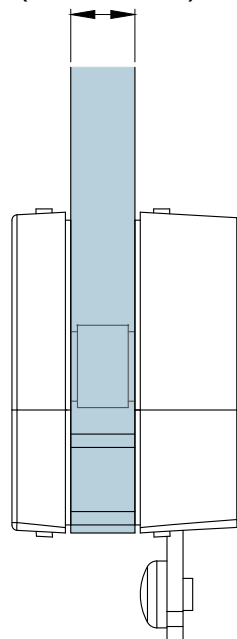
Glass Preparation



Glass Thickness	10 - 12 mm Glass Thickness
Material	Body: Aluminium Cover: Stainless Steel
Finishes	Polished Stainless Steel Satin Stainless Steel



Glass Thickness  
(10-12mm)



Glass Preparation

