

SLF300

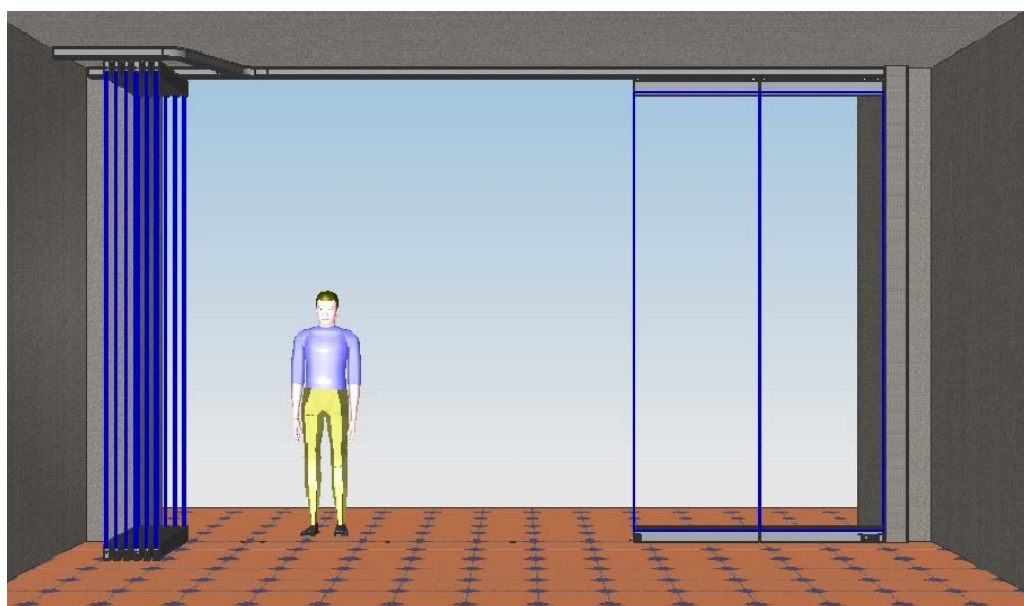
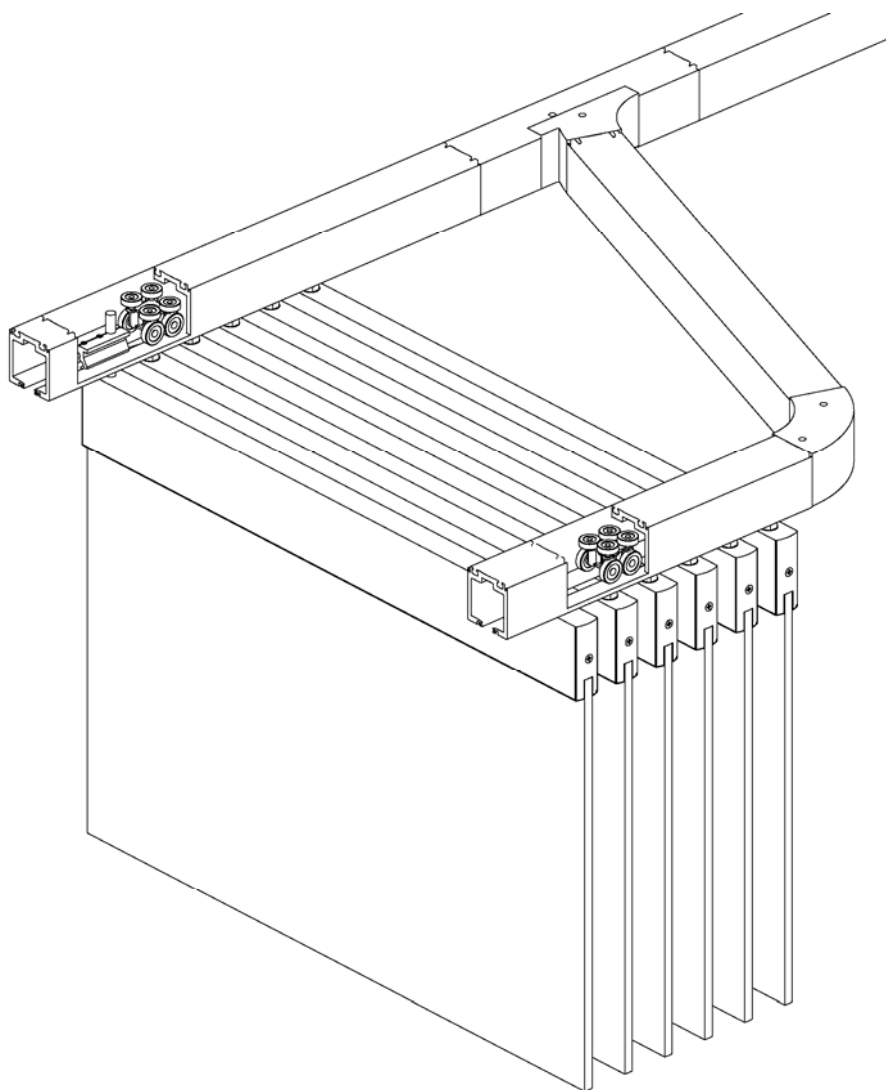
SLF300 Slide and Stack Glass Panel System features a comprehensive combination of aluminium top track that facilitates flexibility in design layout. This system is able to carry frameless glass door panels of up to 4000mm in height and width of up to 1100mm.

With its robust carriage roller made up of stainless steel body with eight ball bearing wheels, it allows better weight distribution and stability, thereby eliminating excessive swaying and reducing the track to wheel friction thus translating smooth and effortless sliding motion.

SLF300 complements both maximum shopfront area and close customer proximity as you have a choice of various parking space layout to dock the individual frameless glass panels.

It also enhances maximum security with various security locking devices (key lock; thumb turn lock).

SLF300 comprises of sliding door intermediate panels and swing door pivot panel. In addition, you have a choice of both aluminum clip-on rail covers or stainless steel rail-covers of both polish and satin finish.



Cross Section (Intermediate Panels) with DRM80 Rails

SLF300 with DRM80 Rails is available with the following components:

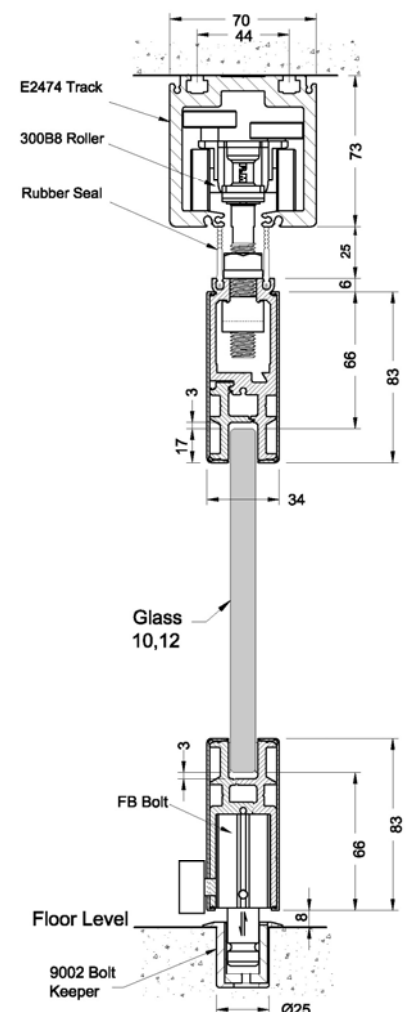
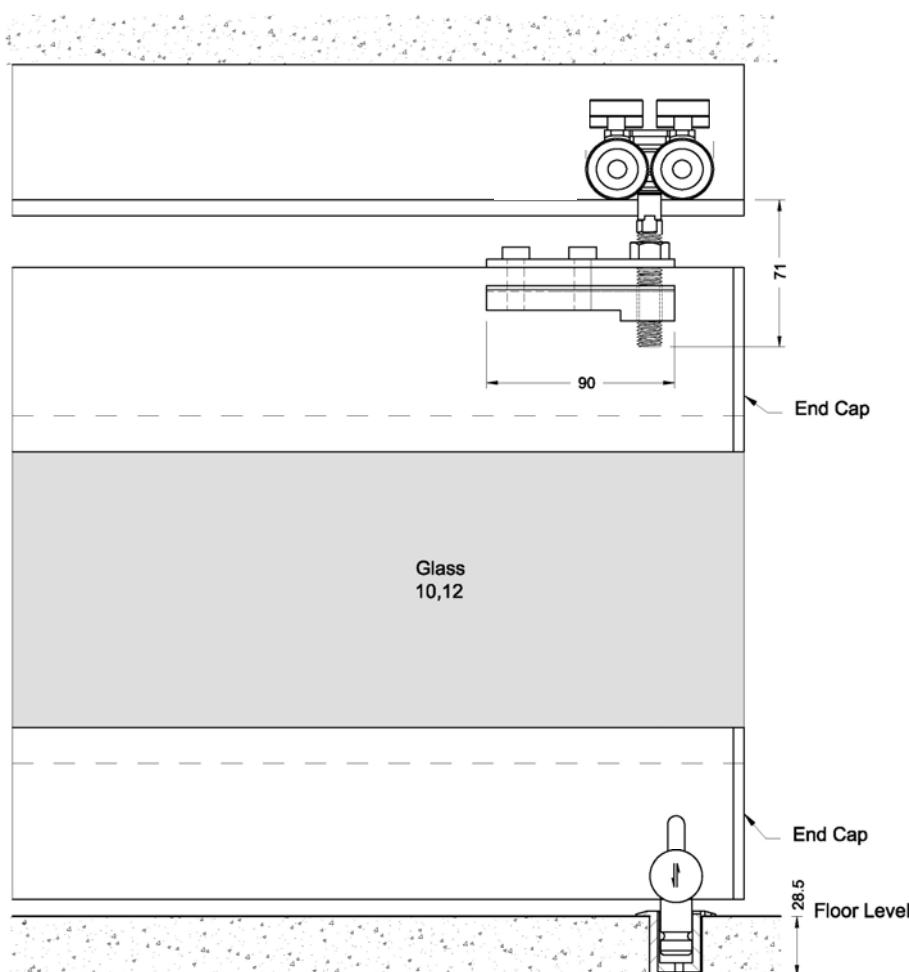
- Main Top Tracks
- Sliding Door Panels comprising of:
 - DRM80 Top & Bottom Rails (1set / panel)
 - 8pt Carriage Rollers (2nos / panel)
 - Rubber Seals
 - Flush Bolts
 - End Caps
 - Bolt Keepers
- Pivot Door Panels comprising of:
 - DRM80 Top & Bottom Rails (1set / panel)
 - Top Pivot / End Stopper
 - Bottom Pivot
 - Rubber Seals
 - Euro-profile Key / Thumb Turn Cylinders
 - Lock Bolt
 - End Caps
 - Bolt Keeper
- Parking Bay comprising of:
 - Junction Track (90° / 110°)
 - Elbow Track (90° / 110°)

Upon order, please specify the following:

- Length of Rails
(Glass panel width is required)
- Door Rails Covers
Aluminium Snap-On (Natural Anodised)
Stainless Steel (Polish/Satin)
- Glass Thickness
(10 / 12mm)
- Key Combinations
(Independent / Key-Alike)

Note:

- Total number of panels per system is determined by:
 - Total clear opening width
 - Per glass panel width (ne: 1000mmL)
 - Number of Parking Bay
- SS316 stainless steel cover is available subject to availability.



Cross Section (Intermediate Panels) with DRM100 Rails

SLF300 with DRM100 Rails is available with the following components:

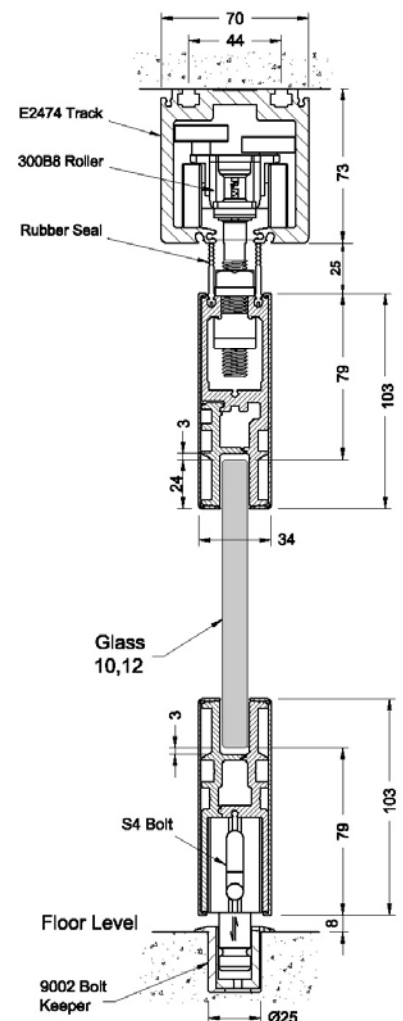
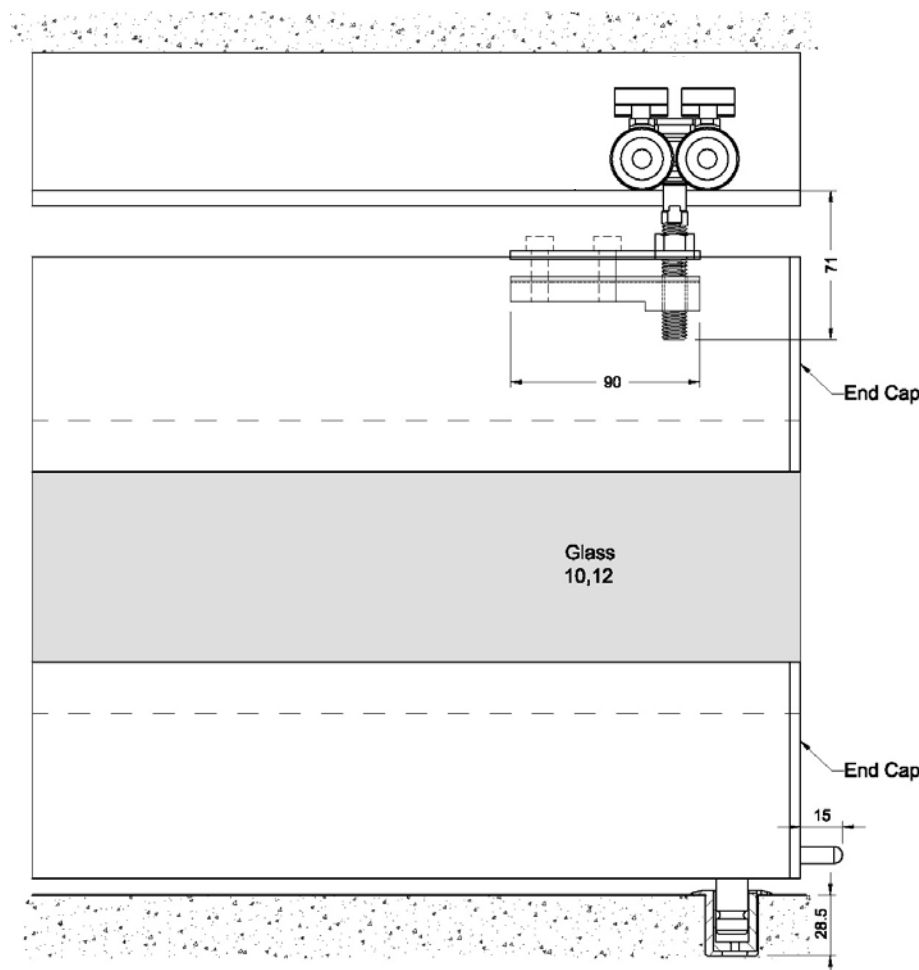
- Main Top Tracks
- Sliding Door Panels comprising of:
 - DRM100 Top & Bottom Rails (1set / panel)
 - 8pt Carriage Rollers (2nos / panel)
 - Rubber Seals
 - Flush Bolts
 - End Caps
 - Bolt Keepers
- Pivot Door Panels comprising of:
 - DRM100 Top & Bottom Rails (1set / panel)
 - Top Pivot / End Stopper
 - Bottom Pivot
 - Rubber Seals
 - Euro-profile Key / Thumb Turn Cylinders
 - Lock Bolt
 - End Caps
 - Bolt Keeper
- Parking Bay comprising of:
 - Junction Track (90° / 110°)
 - Elbow Track (90° / 110°)

Upon order, please specify the following:

- Length of Rails
(Glass panel width is required)
- Door Rails Covers
Aluminium Snap-On (Natural Anodised)
Stainless Steel (Polish/Satin)
- Glass Thickness
(10 / 12mm)
- Key Combinations
(Independent / Key-Alike)

Note:

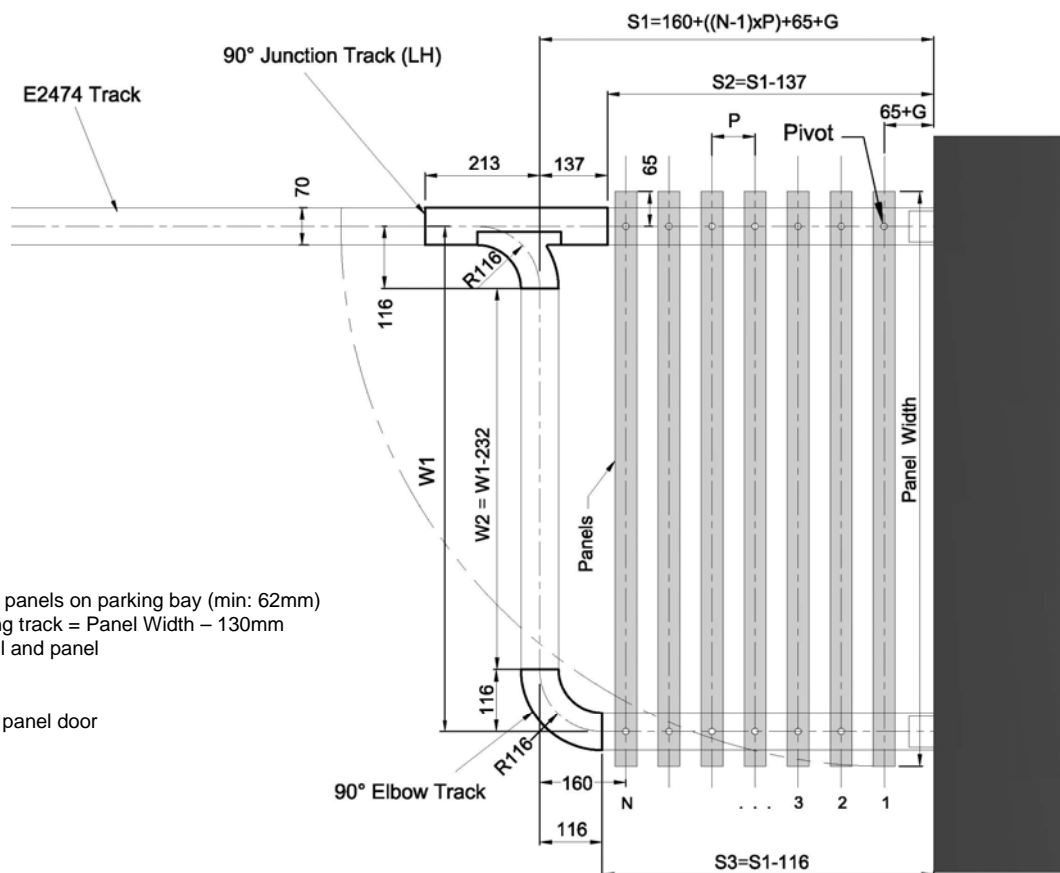
- Total number of panels per system is determined by:
 - Total clear opening width
 - Per glass panel width (ne: 1000mmL)
 - Number of Parking Bay
- SS316 stainless steel cover is available subject to availability.



All Rights Reserved – Dimensions Tolerances & Specifications

Plan View of Parking Space

Layout 1



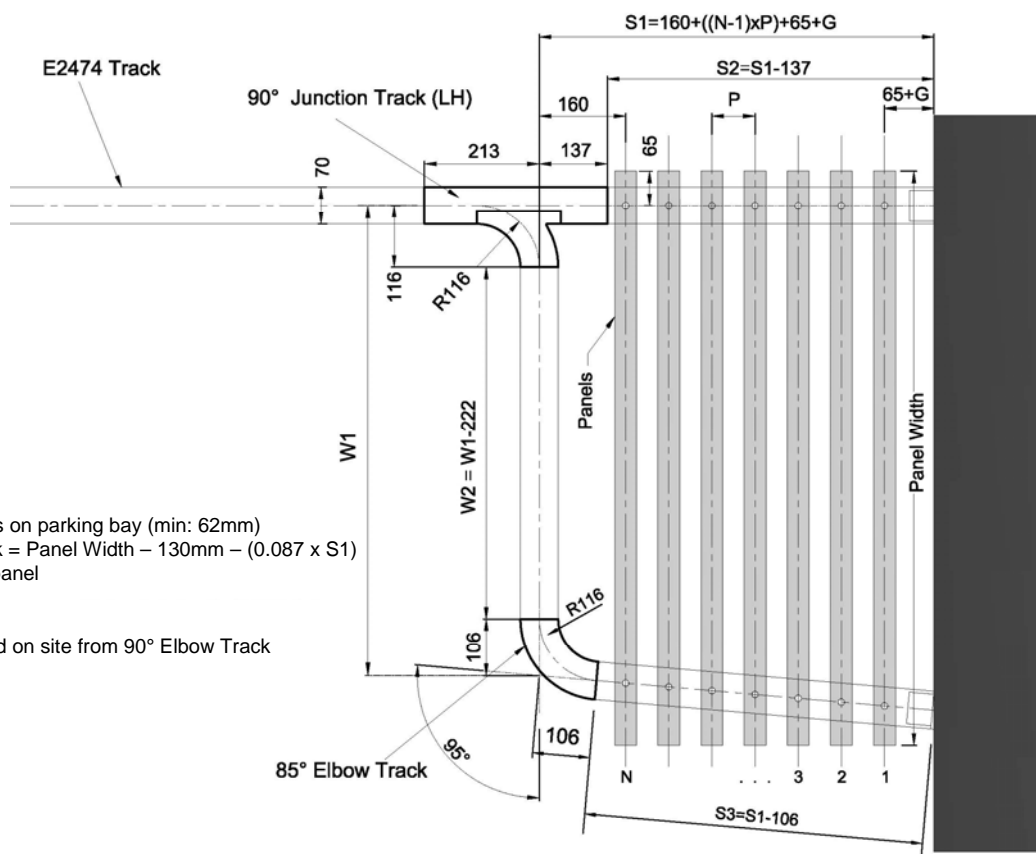
Legend:

N = No. of panels
 P = distance between panels on parking bay (min: 62mm)
 W1 = Width of stacking track = Panel Width – 130mm
 G = Gap between wall and panel

Note:

1st Panel is a pivoting panel door

Layout 2



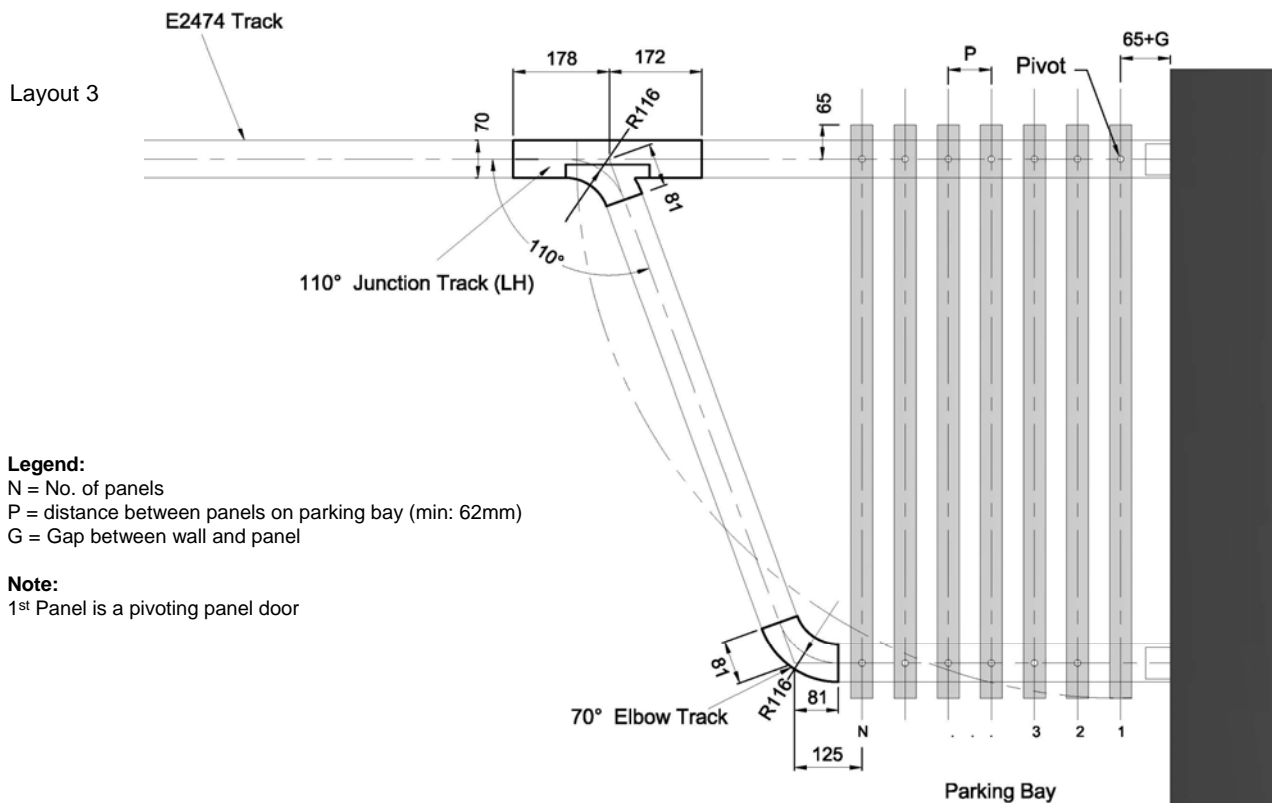
Legend:

N = No. of panels
 P = distance between panels on parking bay (min: 62mm)
 W1 = Width of stacking track = Panel Width – 130mm – (0.087 x S1)
 G = Gap between wall and panel

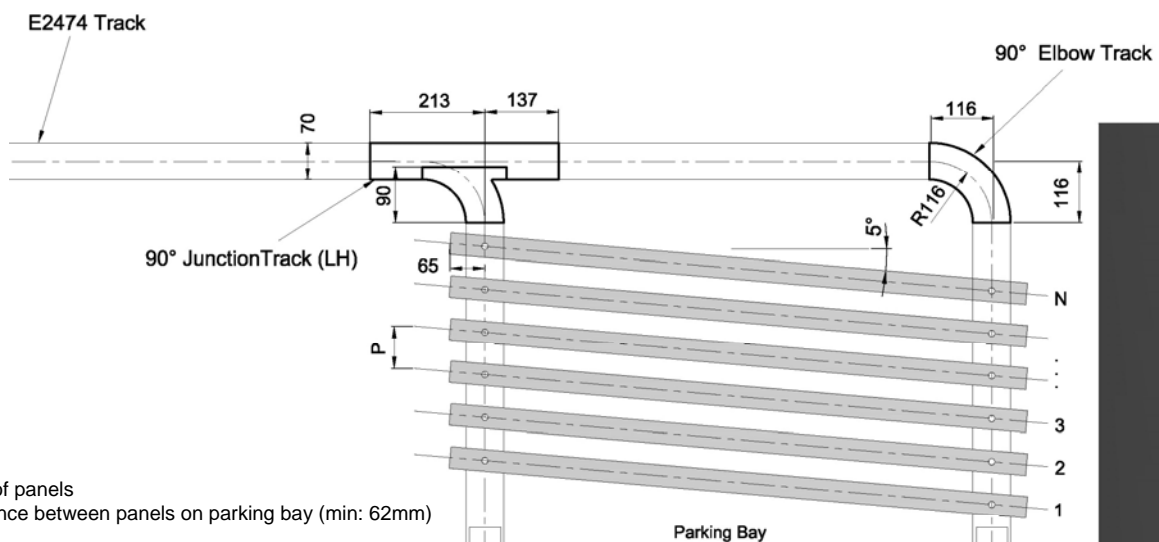
Note:

85° Elbow Track is fabricated on site from 90° Elbow Track

Plan View of Parking Bay

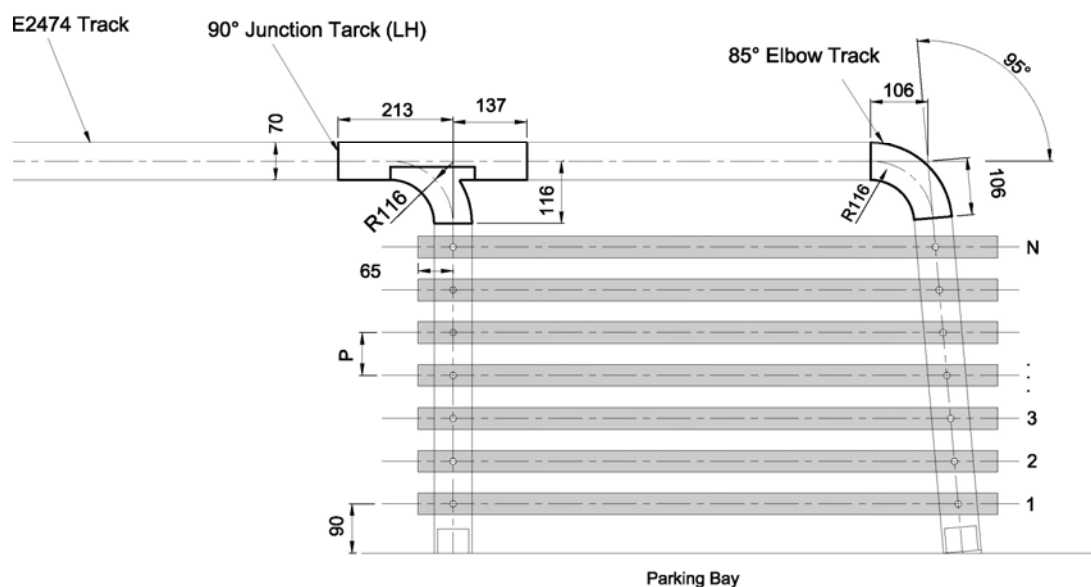


Layout 4



Plan View of Parking Bay

Layout 5



Legend:

N = No. of panels

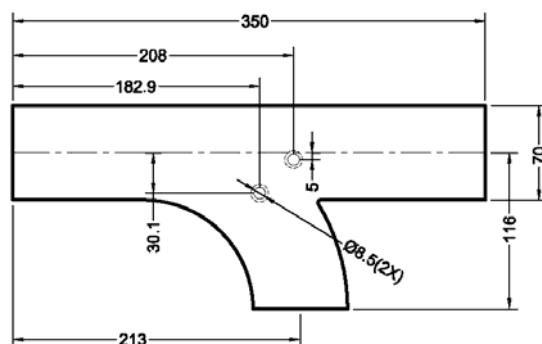
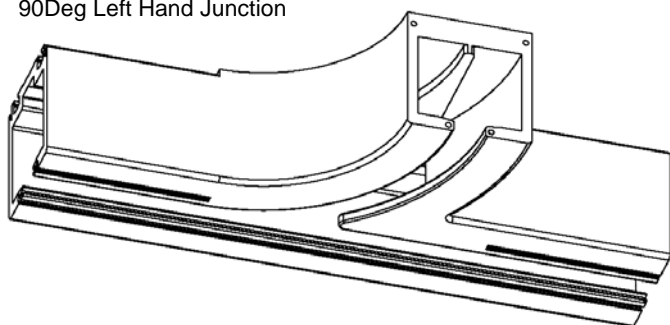
P = distance between panels on parking bay (min: 62mm)

Note:

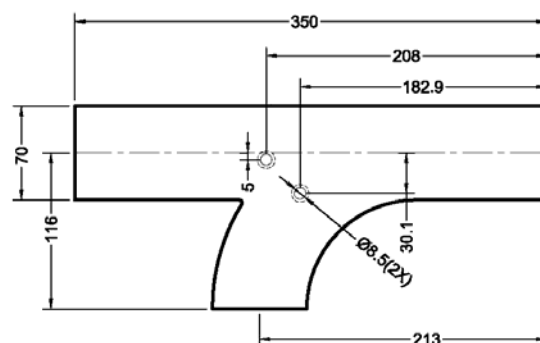
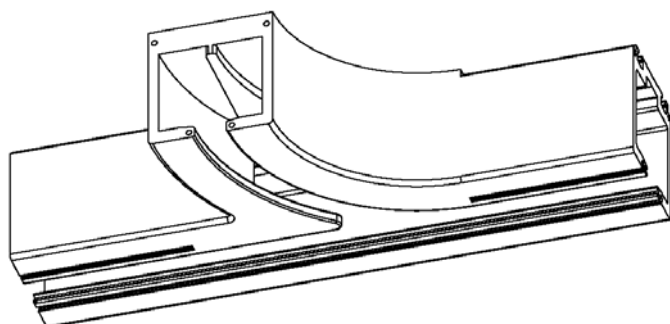
85° Elbow Track is fabricated on site from 90° Elbow Track

Aluminium Top Track

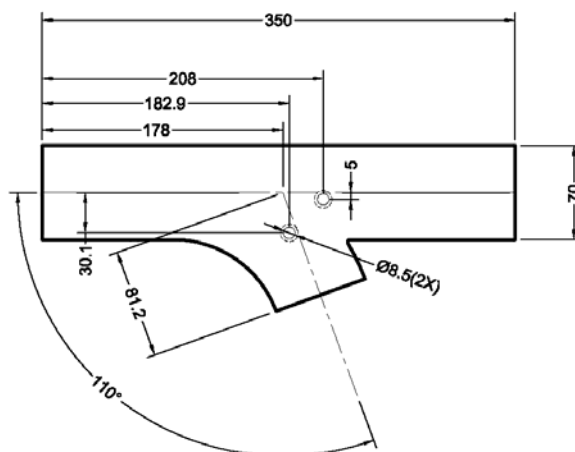
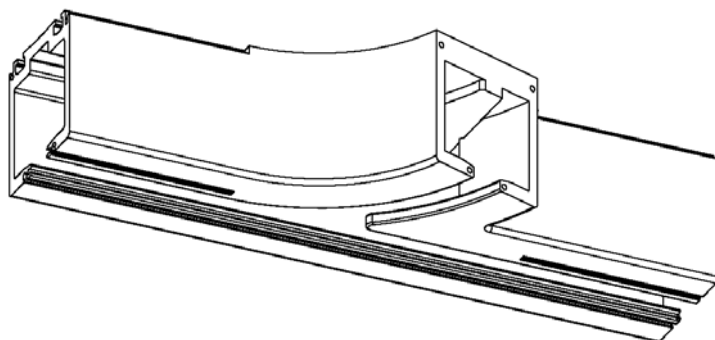
90Deg Left Hand Junction



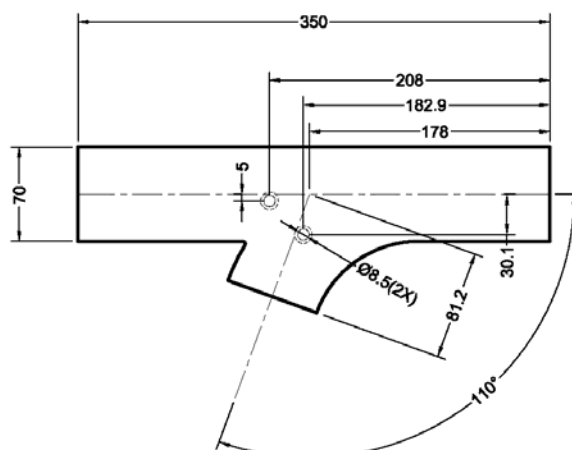
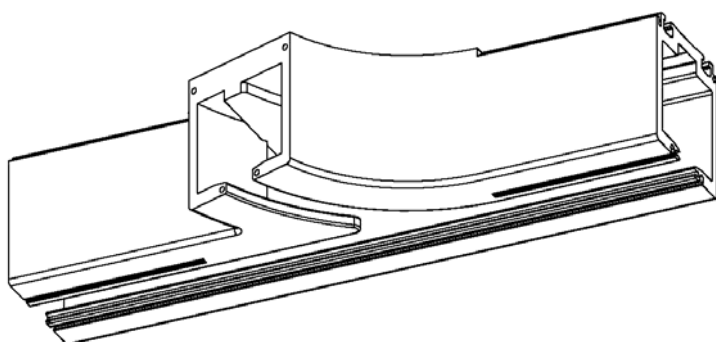
90Deg Right Hand Junction



110Deg Left Hand Junction



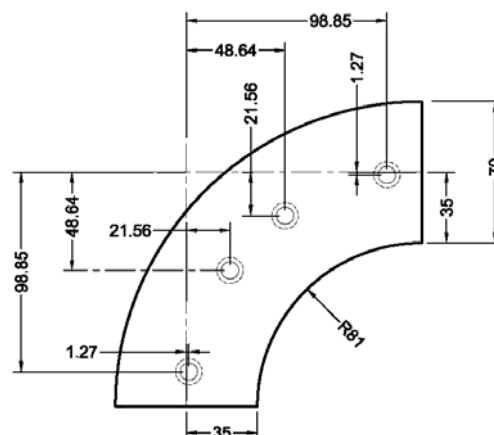
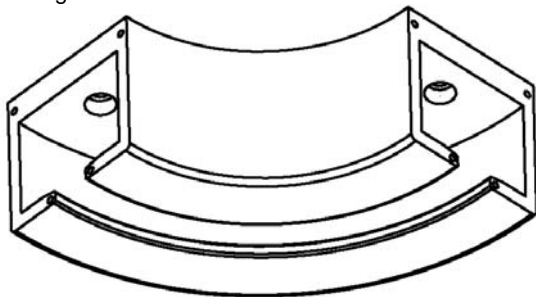
110Deg Right Hand Junction



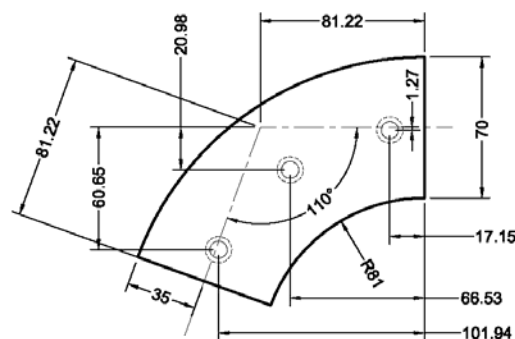
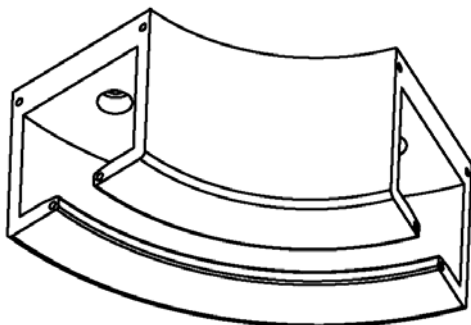
All Rights Reserved – Dimensions Tolerances & Specifications

Aluminium Top Track

90Deg Elbow

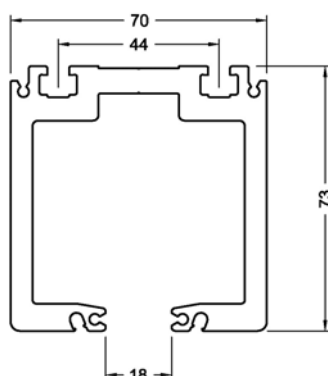
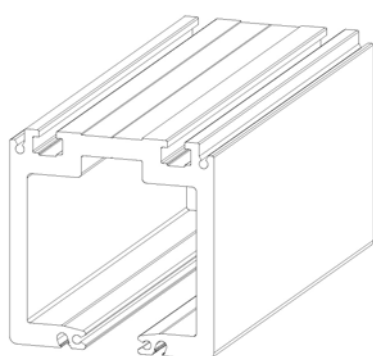


110Deg Elbow

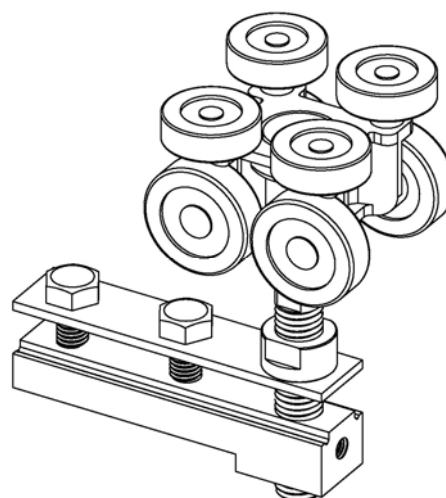


Accessories

E2474 – Main Top Track

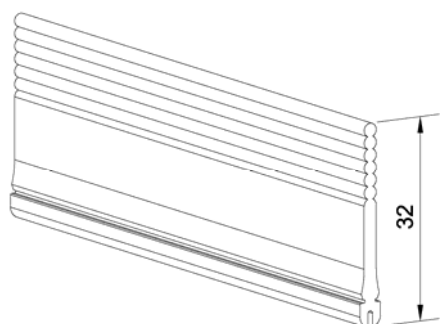


300B8 – 8pt Carriage Roller with Slider

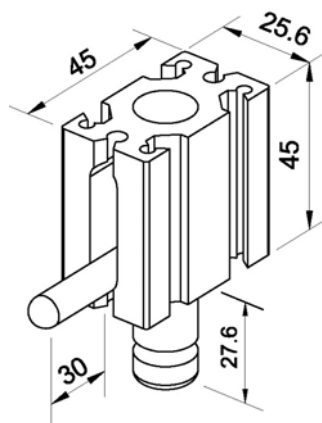


Accessories

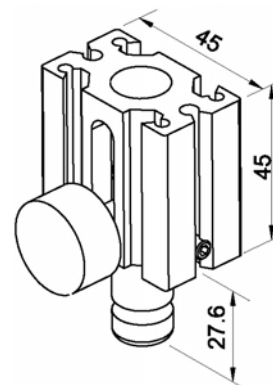
7322 – Rubber Seal



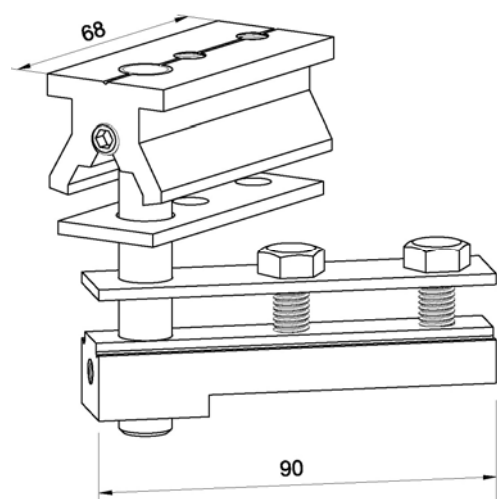
S4 – End Flush Bolt



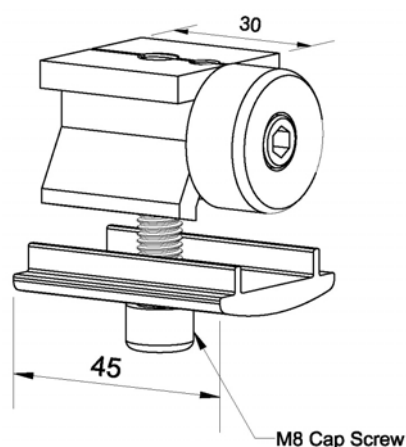
FB- Front Flush Bolt



300TP – Top Pivot with Slider

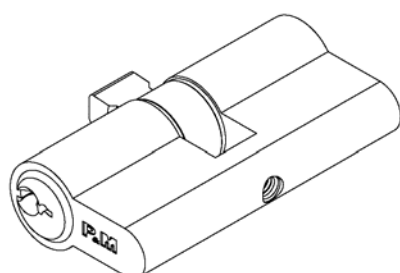


300ES – End Stopper



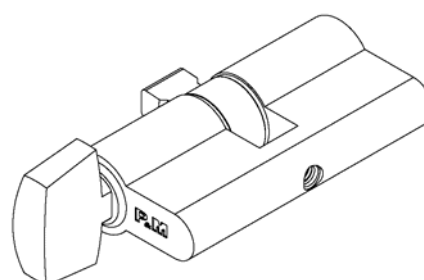
PM88 – Euro-Profile Key Cylinder

Available Length : (62mm; 42mm)



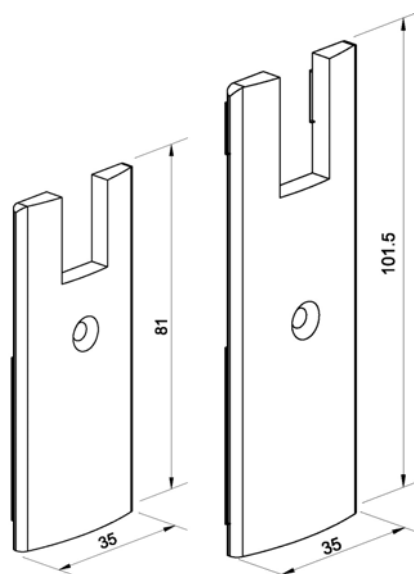
PM88T- Thumb Turn & Key Cylinder

Available Length : (62mm, 28mm Thumb Turn Only)

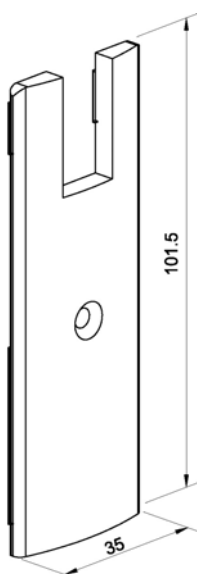


Accessories

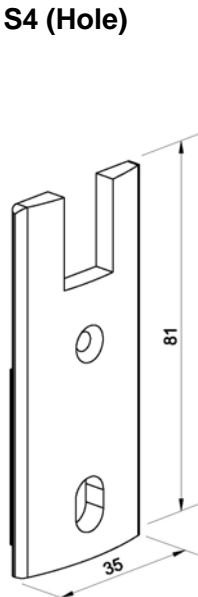
End Caps
EC80



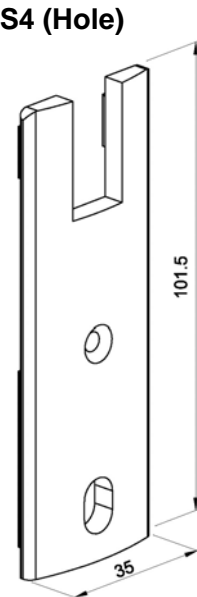
EC100



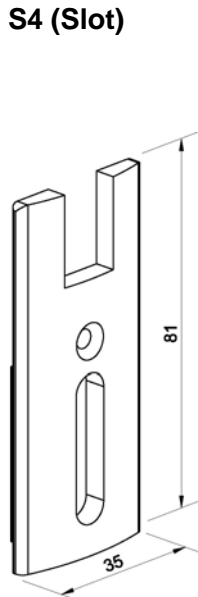
EC80H
S4 (Hole)



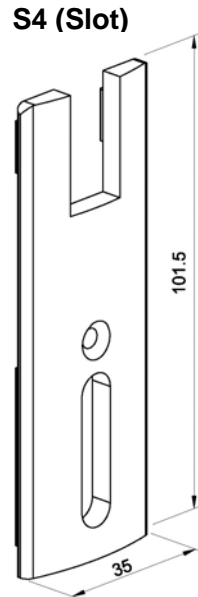
EC100H
S4 (Hole)



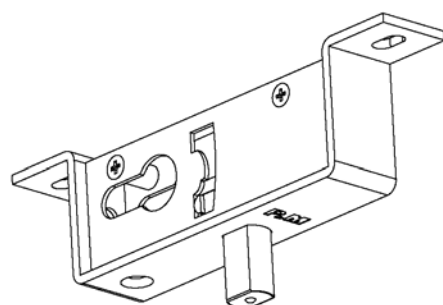
EC80S
S4 (Slot)



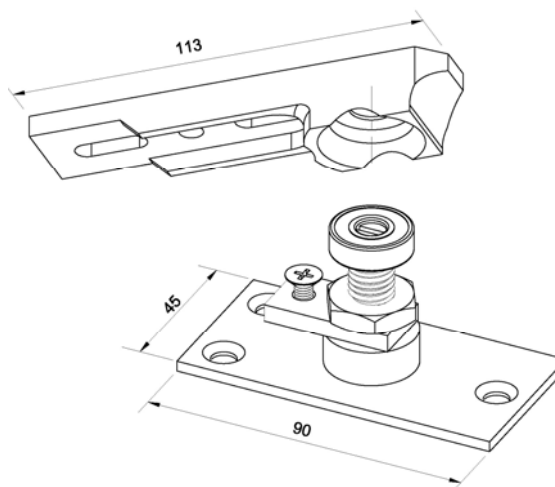
EC100S
S4 (Slot)



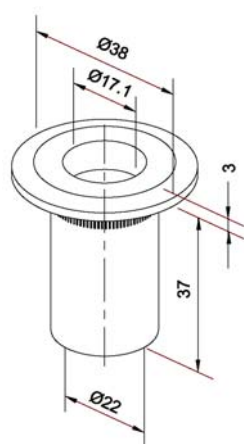
PL2 – Lock Bolt



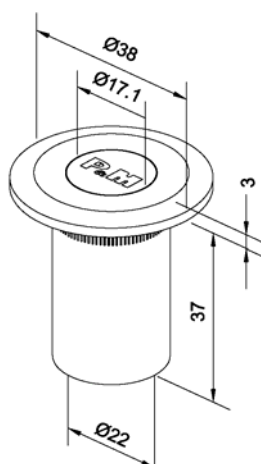
PD16 – Bottom Pivot



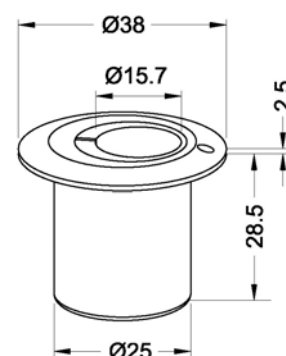
9001 – Bolt Keeper



9001WS – Bolt Keeper with Spring



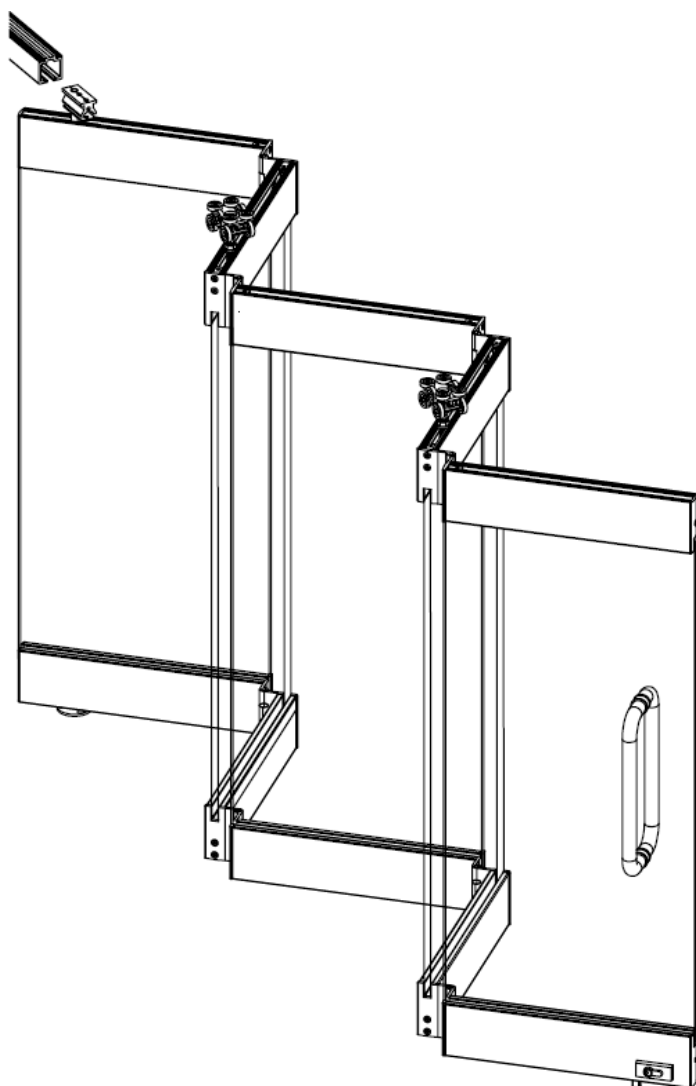
9002 – Eccentric Bolt Keeper



ALSO AVAILABLE

SLF400

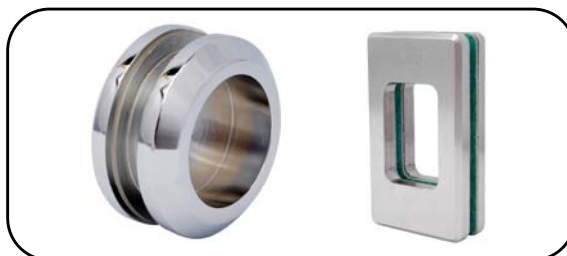
Slide and Fold Glass Panels System



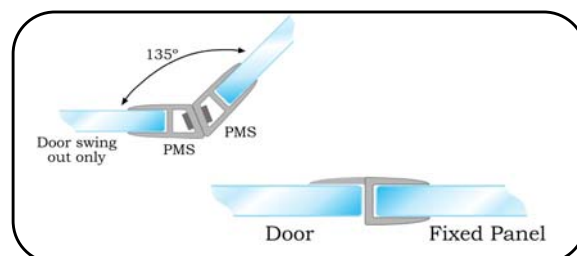
RELATED PRODUCTS



Door Handles – Melosa Series



Door Knobs – Cerise Series



Vinyl Clip Seals – Deane Series

1 Preference
The Preferred Name in Entrance Systems

Preference Manufacturing Pte Ltd

No.2 Kallang Pudding Road #01-02/06/07 Mactech Industrial Building Singapore 349307
Tel: (65) 6746 5185 Fax: (65) 6746 8749 Email: enquiry@preference.com.sg Website: www.preference.com.sg